

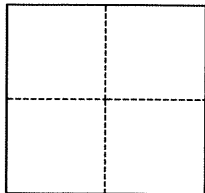
CORNER RECORD

Agency Index BK 101 PG 79
Document Number CR 10590

City of HAYWARD County of ALAMEDA, California
Brief Legal Description LOTS 1, 2, 11 & 12, BLOCK C (38-M-43)

CORNER TYPE

COORDINATES (Optional)



- ☐ Government Corner ☐ Control
☐ Meander ☒ Property
☐ Rancho ☐ Other

Date of Survey _____

N. _____ E. _____
Elevation _____
Units ☐ Metric ☐ U.S. Survey Foot
Horizontal Datum _____
Zone _____ Epoch Date _____
Vertical Datum _____
☐ Complies with Public Resources Code §§8801-8819
☐ Complies with Public Resources Code §§8890-8902

PLS Act Ref.: ☒ 8765(d) ☐ 8771 ☐ 8773 ☐ Other:
Corner/Monument: ☐ Left as found ☒ Established ☐ Rebuilt ☐ Pre-Construction
☐ Found and tagged ☐ Reestablished ☐ Referenced ☐ Post-Construction

Narrative of corner identified and monument as found, set, reset, replaced, or removed:
☐ See sheet #2 for description(s):

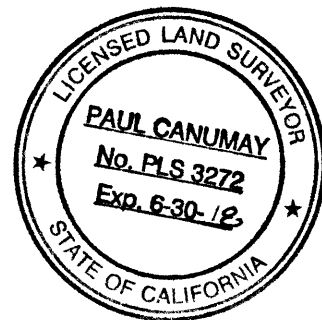
**FOUND 2-1/2" BRASS DISK WITH PUNCH IN MONUMENT WELL PER 38-M-43.
SEE REVERSE SIDE FOR MONUMENTS FOUND AND SET.**

SURVEYOR'S STATEMENT

This Corner Record was prepared by me or under my direction in conformance with

the Professional Land Surveyors' Act on 8-20-17

Signed Paul Canumay (P.L.S.) or R.C.E. No. 3272



COUNTY SURVEYOR'S STATEMENT

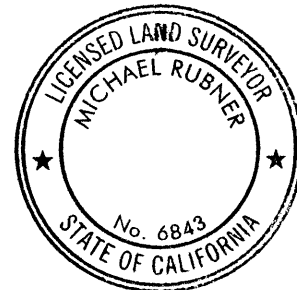
This Corner Record was received 12 SEPTEMBER, 2017

and examined and filed 22 SEPTEMBER, 2017

Signed Michael Rubner P.L.S. or R.C.E. No. 6843

Title COUNTY SURVEYOR

County Surveyor's Comment



LEGEND:

B.O.B. BASIS OF BEARINGS

W.C. WITNESS CORNER

—○— FD. 2-1/2" BRASS DISC WITH PUNCH IN MON. WELL PER (R1)

—+— FD. CUT CROSS, 2' OFFSET, ON LOT LINE PROJECTED

—●— FD. NAIL AND BRASS TAG SET, STAMPING UNREADABLE

—+— FD. SCRIBED CROSS, NO RECORD, NEAR BACK OF WALK

—●— FD. 5/8" REBAR WITH PLASTIC CAP STAMPED "LINS LS 8951"

—○— SET 5/8" REBAR WITH PLASTIC CAP STAMPED "CANUMAY P.L.S. 3272"

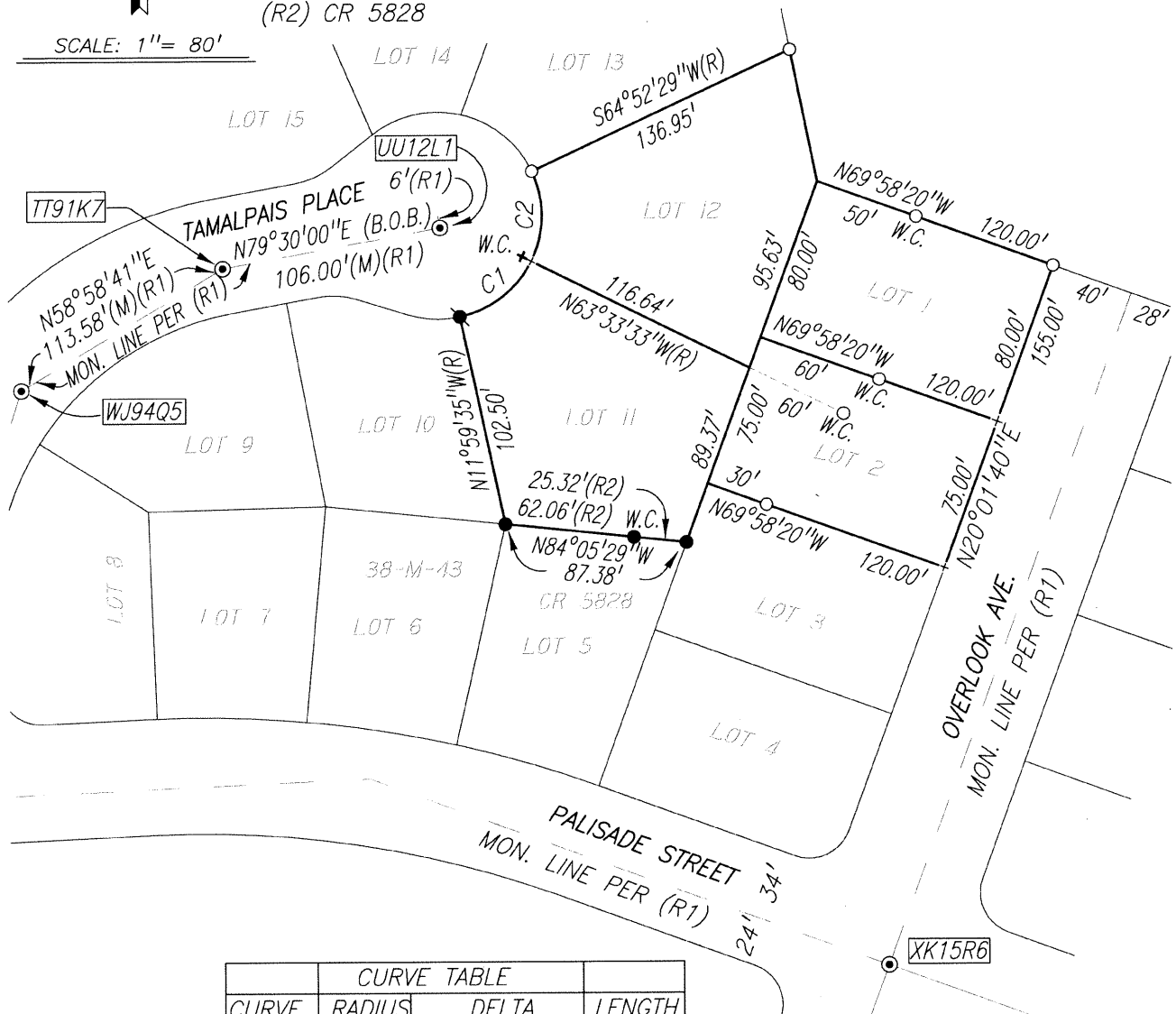
CR CORNER RECORD, ALAMEDA COUNTY SURVEYOR'S RECORDS

AA###A# ALAMEDA COUNTY MONUMENT ID

(R1) 38-MAPS-43

(R2) CR 5828

SCALE: 1" = 80'



CURVE TABLE			
CURVE	RADIUS	DELTA	LENGTH
C1	50.00'	51°33'58"	45.00'
C2	50.00'	51°33'58"	45.00'