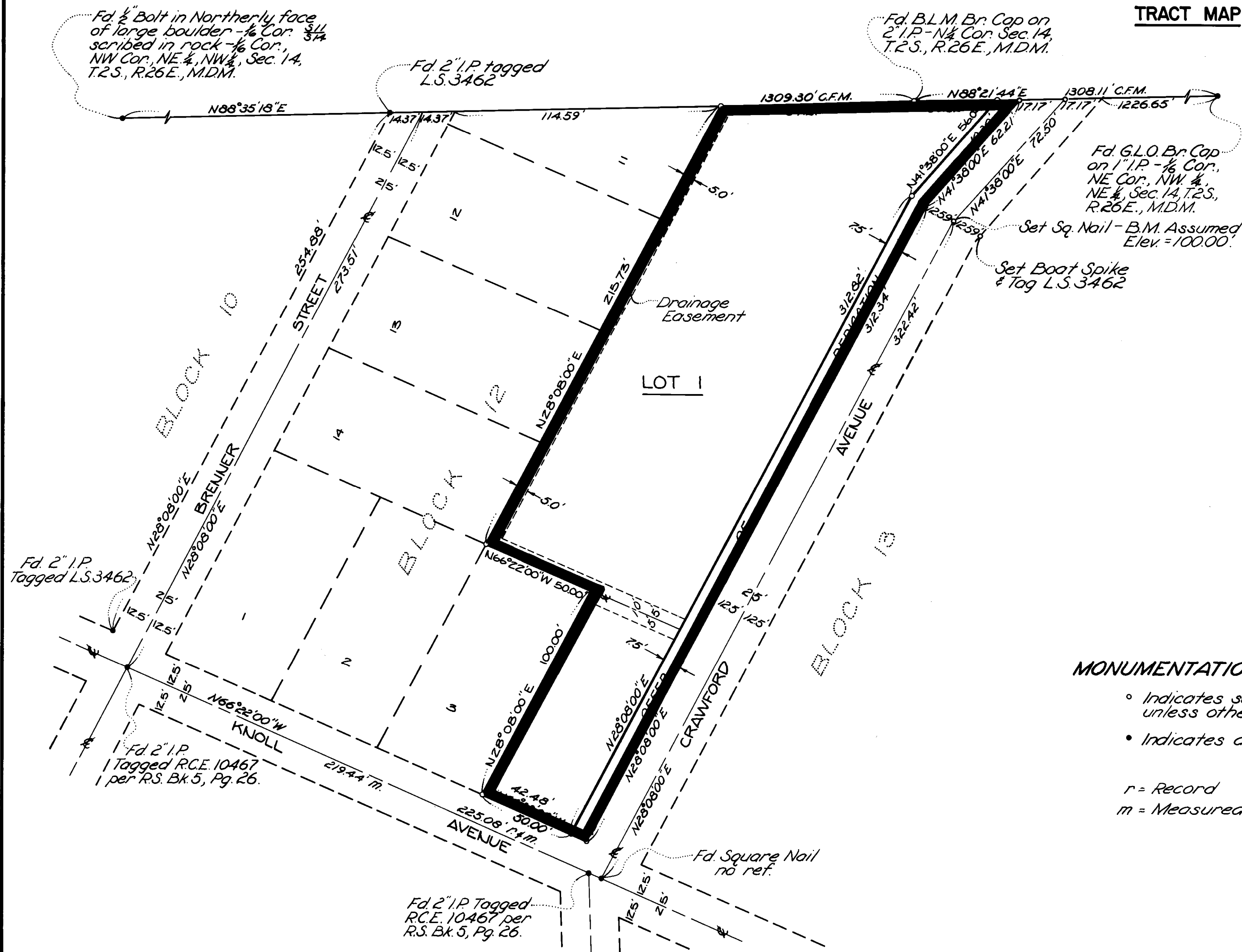


SIERRA SUNS CONDOMINIUM PLAN

TRACT NO. 34-4

JUNE LAKE, CALIFORNIA

TRACT MAP



LEGAL DESCRIPTION

IN THE COUNTY OF MONO, STATE OF CALIFORNIA, BEING A SUBDIVISION OF ALL OF LOTS 4, 5, 6, 7, 8, AND A PORTION OF LOTS 9 & 10, BLOCK 12 OF SILVER LAKE PINES, TRACT NO. 1 PER BOOK 1, OF MAPS, AT PAGE 2 OF THE OFFICIAL RECORDS OF THE COUNTY OF MONO, AND BEING SITUATED IN THE NE 1/4 OF THE NW 1/4, AND IN THE NW 1/4 OF THE NE 1/4 OF SECTION 14, T.2S., R.26E., M.D.B. & M.

SCALE: 1"=30'

BASIS OF BEARING:

BEARINGS ARE BASED ON THE CENTERLINE OF KNOLL AVENUE SHOWN AS N66°22'00"W ON RECORD OF SURVEY FILED IN BOOK 5 OF MAPS, AT PAGE 6 OF OFFICIAL RECORDS OF MONO COUNTY.

MONUMENTATION:

- Indicates set 2" I.P. & Tag L.S. 3462, unless otherwise noted.
- Indicates a found point as noted.

r = Record
m = Measured