

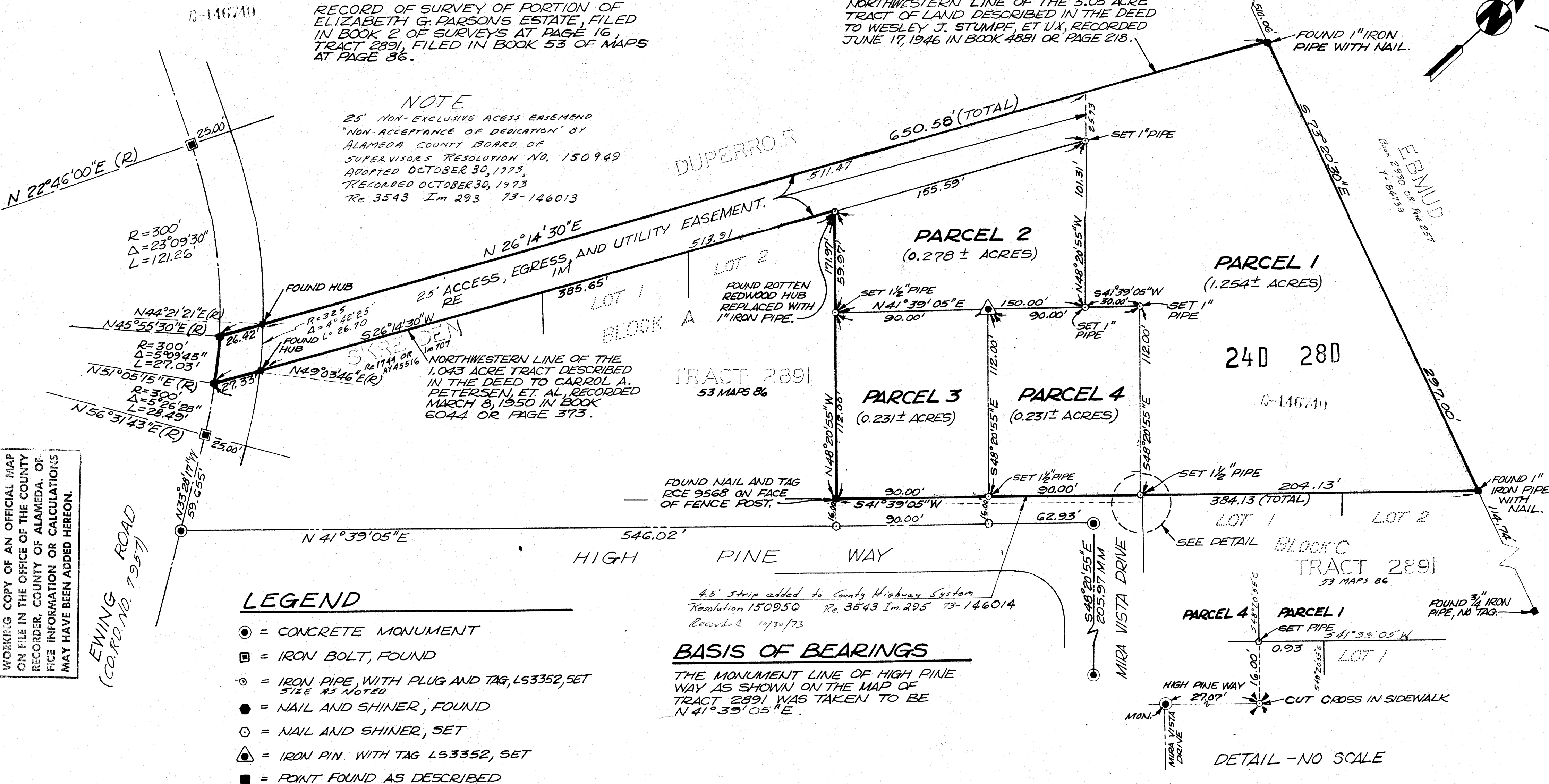
## REFERENCES

RECORD OF SURVEY OF PORTION OF ELIZABETH G. PARSONS ESTATE, FILED IN BOOK 2 OF SURVEYS AT PAGE 16, TRACT 2891, FILED IN BOOK 53 OF MAPS AT PAGE 86.

## NOTE

25' NON-EXCLUSIVE ACCESS EASEMENT "NON-ACCEPTANCE OF DEDICATION" BY ALAMEDA COUNTY BOARD OF SUPERVISORS RESOLUTION NO. 150949 ADOPTED OCTOBER 30, 1973, RECORDED OCTOBER 30, 1973 Re 3543 Im 293 73-146013

NORTHWESTERN LINE OF THE 3.05 ACRE TRACT OF LAND DESCRIBED IN THE DEED TO WESLEY J. STUMPF, ET UX, RECORDED JUNE 17, 1946 IN BOOK 4881 OR PAGE 218.



**USE WITH CAUTION**  
★ THIS IS A PUBLIC WORKS DEPARTMENT WORKING COPY OF AN OFFICIAL MAP ON FILE IN THE OFFICE OF THE COUNTY RECORDER, COUNTY OF ALAMEDA. OFFICE INFORMATION OR CALCULATIONS MAY HAVE BEEN ADDED HEREON.

## SURVEYOR'S CERTIFICATE

THIS MAP WAS PREPARED BY ME OR UNDER MY DIRECTION AND IS BASED UPON A FILED SURVEY IN CONFORMANCE WITH THE REQUIREMENTS OF SUBDIVISION MAP ACT AT THE REQUEST OF MILDRED KILNER ON AUGUST 15, 1973. I HEREBY CERTIFY THAT IT CONFORMS TO THE APPROVED TENTATIVE MAP AND THE CONDITIONS OF APPROVAL THEREOF; THAT ALL PROVISIONS OF APPLICABLE STATE LAW AND LOCAL ORDINANCE HAVE BEEN COMPLIED WITH.

(SIGNED AND SEALED) *Harold B. Davis*  
HAROLD B. DAVIS, L.S. 3352

## COUNTY SURVEYOR'S CERTIFICATE

THIS MAP HAS BEEN EXAMINED THIS 31st DAY OF OCTOBER, 1973, FOR CONFORMANCE WITH THE REQUIREMENTS OF SECTION 11575 OF THE SUBDIVISION MAP ACT.

(SIGNED) *Herbert G. Crowle*  
HERBERT G. CROWLE, COUNTY SURVEYOR  
R.C.E. No. 6516

## RECORDER'S CERTIFICATE

FILED THIS 31st DAY OF OCTOBER, 1973, AT 4:15 P.M. IN BOOK 80 OF PARCEL MAPS AT PAGE 51, AT THE REQUEST OF HERBERT G. CROWLE.

JACK G. BLUE  
COUNTY RECORDER  
73-146740  
\$5.00  
BY *Donna J. Belardi*  
DEPUTY COUNTY RECORDER

## PARCEL MAP No. 1200