

EXTERIOR FINISH SCHEDULE

INSTALLED AND FURNISHED BY: G.C. UNLESS NOTED OTHERWISE

01-11-19

NO	MANUFACTURER	MFG#	COLOR	FINISH	NOTES
(EIFS-1)	STO	STOTHERM ESSENCE SYSTEM	SW 6148 WOOL SKEIN	FINE	BUILDING BODY
(EIFS-2)	STO	STOTHERM ESSENCE SYSTEM	SW 7067 CITYSCAPE	FINE	BUILDING BODY
(EIFS-3)	STO	STOTHERM ESSENCE SYSTEM	SW 7069 IRON ORE	FINE	EIFS ACCENT BAND
(ST-1S)	CORONADO STONE PRODUCTS	900 SERIES	#2 GREY	-	STONE CAP (3/8" VERTICAL JOINT - MORTAR TO MATCH STONE CAP)
(ST-1)	CORONADO STONE PRODUCTS	INDUSTRIAL LEDGE	SHALE GREY	-	ENTRY PORTAL & WAINSCOT CONTACT: LISA KILGORE: 864-962-1221 PROVIDE 3/8" MORTAR JOINTS. MFG: ARGOS, COLOR: CHARCOAL
(CD-1)	FIBERON	WILDWOOD	MULGA	60% MATERIAL COVERAGE - RANDOM MIX (NON-GROOVE)	COMPOSITE DECKING - CONTACT: ERIC ATKINS @ 770-910-0930 EMAIL: Eric.Atkins@fiberondecking.com
(CD-2)	FIBERON	WILDWOOD	SUMAC	40% MATERIAL COVERAGE - RANDOM MIX (NON-GROOVE)	COMPOSITE DECKING - CONTACT: ERIC ATKINS @ 770-910-0930 EMAIL: Eric.Atkins@fiberondecking.com
(MTL-1)	EXCEPTIONAL METALS	-	"PANDA EXPRESS IRON ORE"		CAP FLASHING

WINDOW SCHEDULE

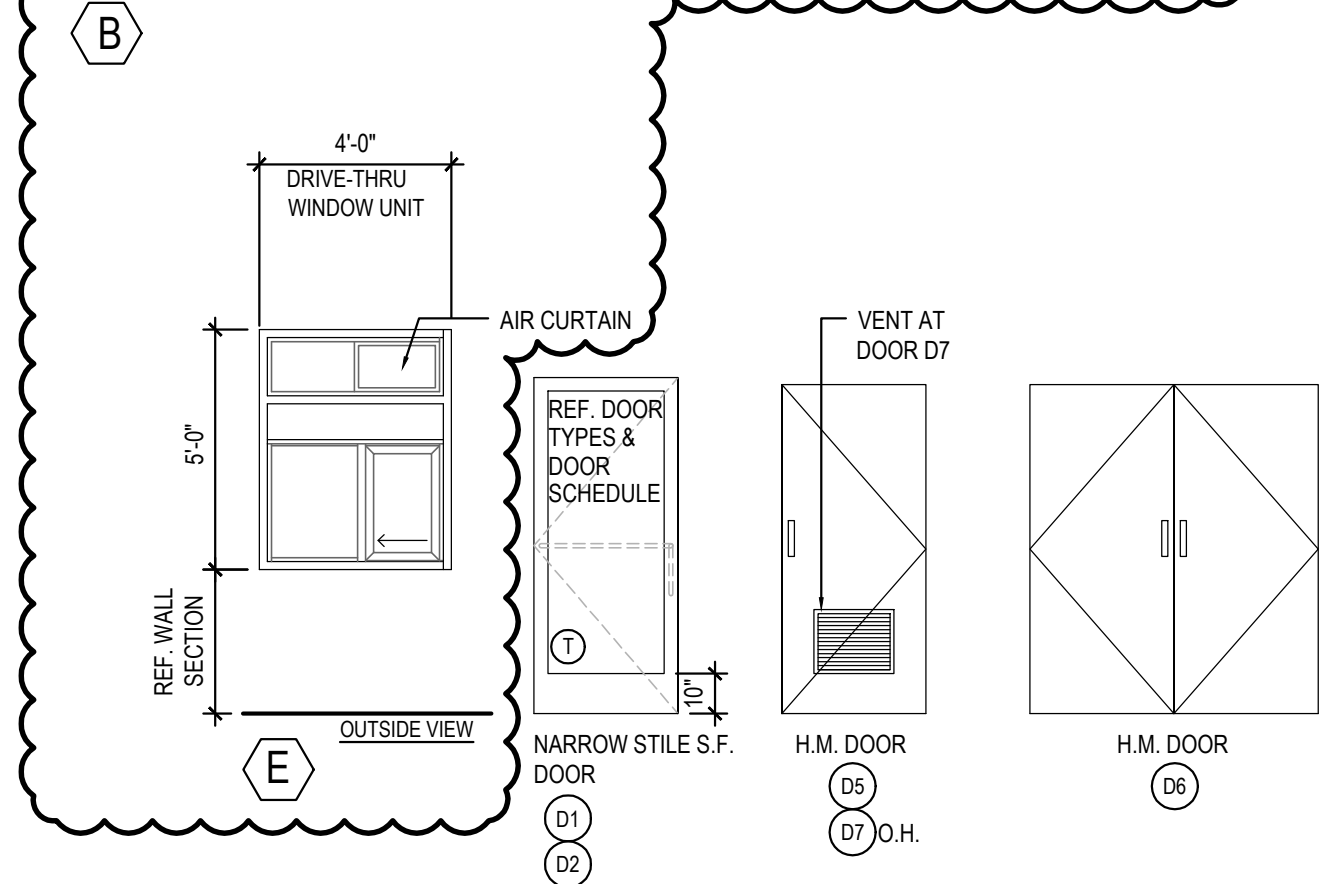
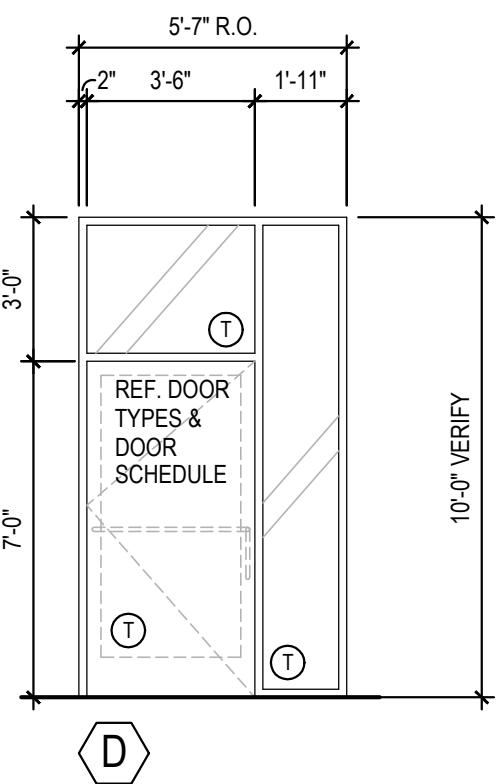
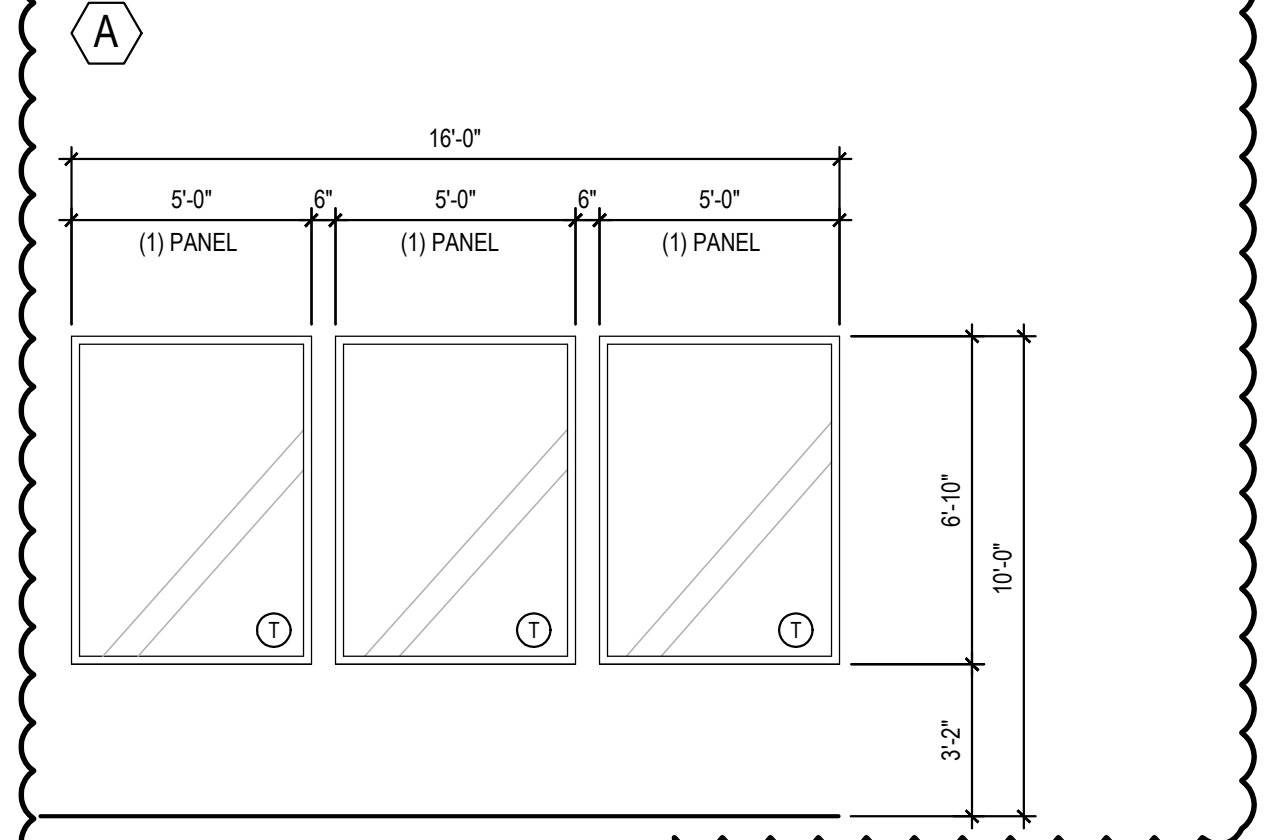
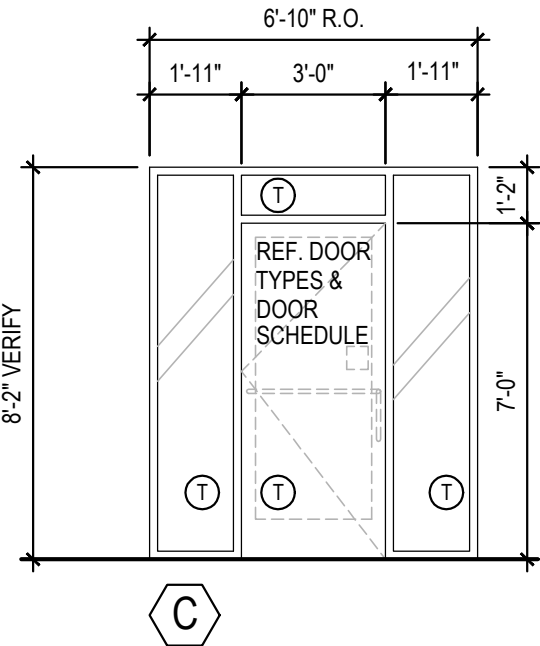
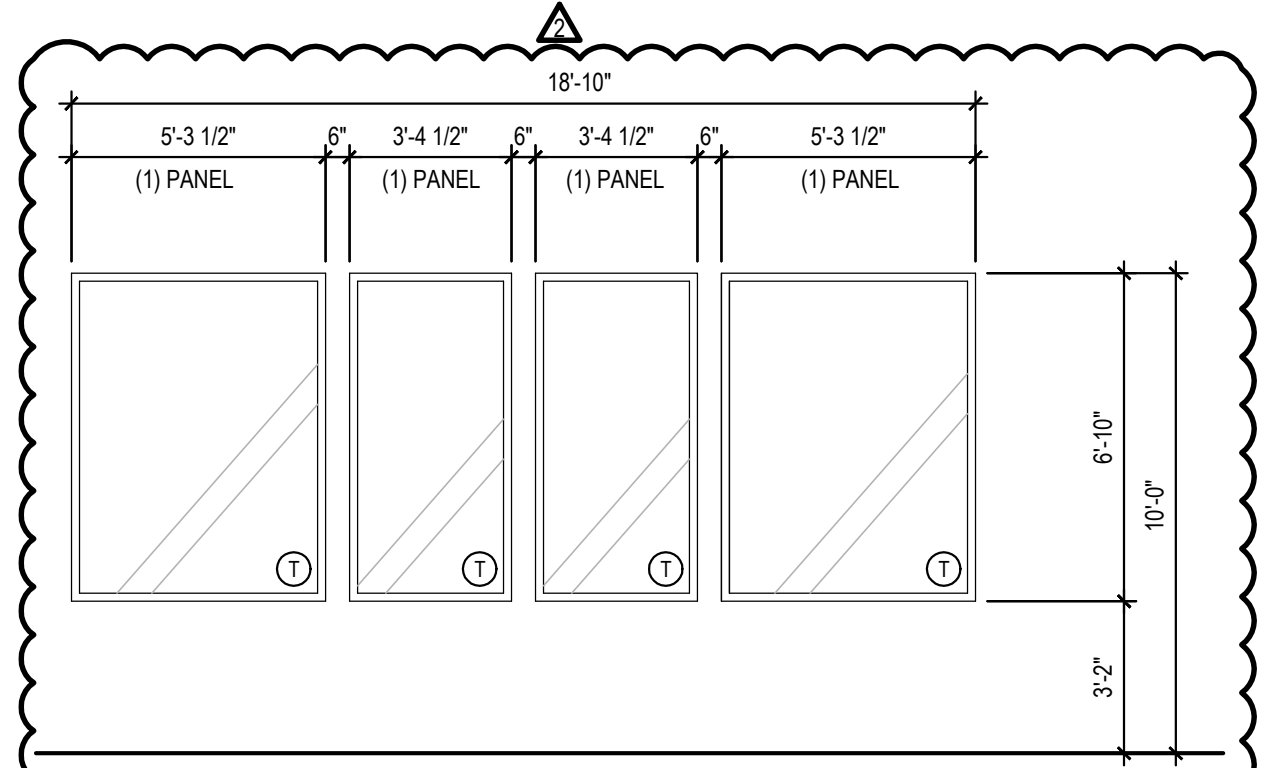
INSTALLED AND FURNISHED BY: G.C. UNLESS NOTED OTHERWISE

SYM	WIDTH	HEIGHT	GLASS	FRAME	REMARKS
(A)	18'-10" LIN. FEET	6'-10"	1" INSULATED GLASS	DARK BRONZE ALUMINUM STOREFRONT	1" INSULATED GLAZING, IN 4.5' X 2" IN ANODIZED ALUMINUM FRAME REFER WINDOW TYPES FOR INDIVIDUAL SIZES
(B)	16'-0" LIN. FEET	6'-10"	1" INSULATED GLASS	DARK BRONZE ALUMINUM STOREFRONT	1" INSULATED GLAZING, IN 4.5' X 2" IN ANODIZED ALUMINUM FRAME REFER WINDOW TYPES FOR INDIVIDUAL SIZES
(C)	6'-10"	8'-2"	1" INSULATED GLASS	DARK BRONZE ALUMINUM STOREFRONT	1" INSULATED GLAZING, IN 4.5' X 2" IN ANODIZED ALUMINUM FRAME
(D)	5'-7"	10'-0"	1" INSULATED GLASS	DARK BRONZE ALUMINUM STOREFRONT	1" INSULATED GLAZING, IN 4.5' X 2" IN ANODIZED ALUMINUM FRAME
(E)	4'-0"	59.5"	TEMPERED GLASS	DARK BRONZE ANODIZED ALUMINUM	QUIK-SERV HEATED AIR CURTAIN, ROUGH OPENING 48" X 60" SEE ADDITIONAL NOTE # 5. CONTACT: WADE ARNOLD, 800-388-8307

NOTES

1. INSULATING GLASS VITRO ARCHITECTURAL GLAZING SOLARBAN 60 LOW E- WINTER U=0.29 SHGC: 0.25 VIS TRANS: 35%
2. DOORS: FULL GLAZED DOORS W/10" KICK BASE, ANODIZED ALUM FINISH. REFER HARDWARE SCHEDULE
3. WINDOW DIMENSIONS ARE FOR BIDDING PURPOSES ONLY. G.C. TO VERIFY ACTUAL WINDOW DIMENSIONS PRIOR TO FABRICATION INSTALLATION.
4. GLASS FACADE AND ENTRY DOORS TO BE DESIGNED, DETAILED, FACTORY FABRICATED AND SITE ASSEMBLED AND ERECTED
5. MANUFACTURER: QUIK-SERV, MODEL SST-4860E WITH THRU-BEAM PHOTO-ELECTRIC BAR. REGIONAL APPLICATION WITH CF-25 NON HEATED AIR CURTAIN OR CHF-25 HEATED AIR CURTAIN. TYPE OF AIR CURTAIN LISTED ON WINDOW SCHEDULE.
6. WINDOW SYSTEM SHALL COMPLY WITH APPLICABLE SECTION AND CHAPTER OF BUILDING CODE.

① TEMPERED GLASS

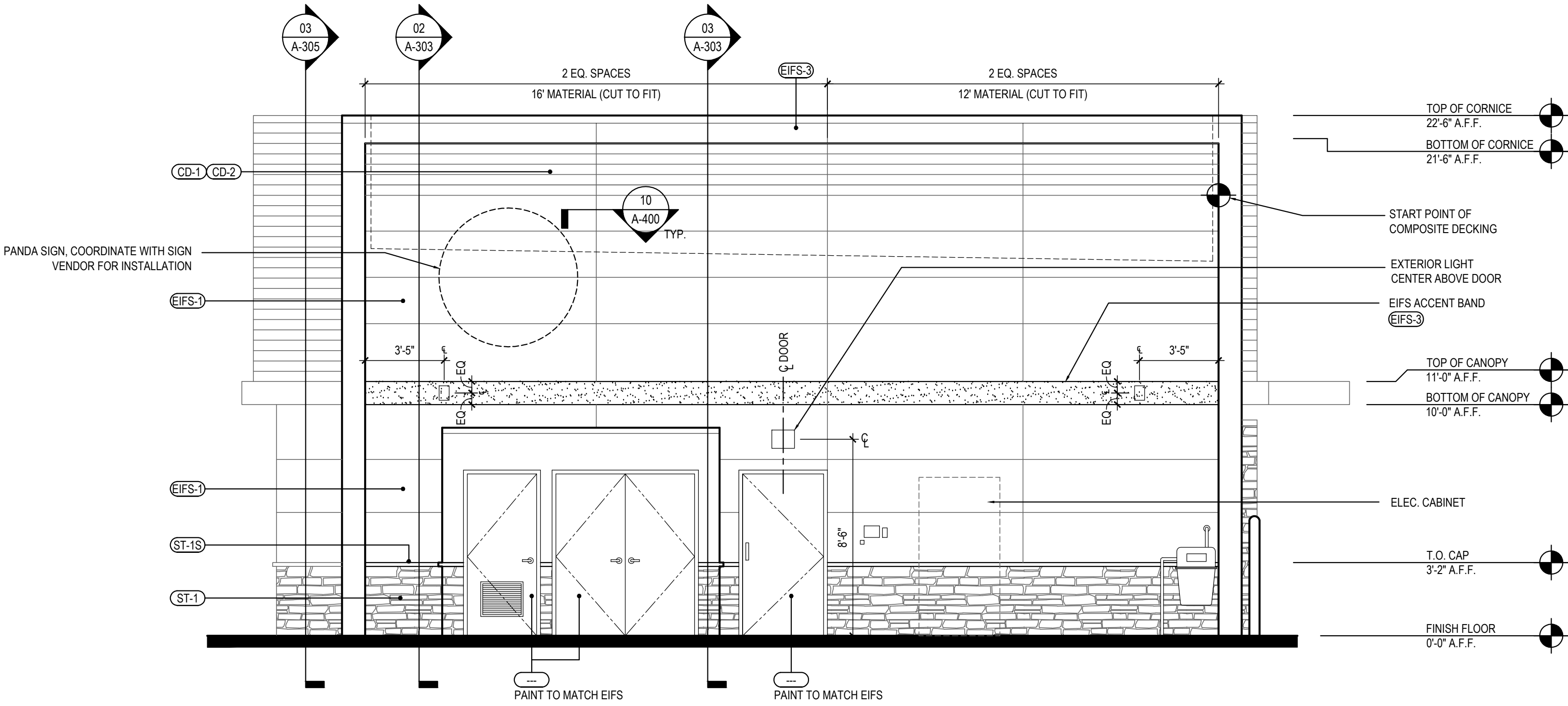


WINDOW AND DOOR ELEVATIONS

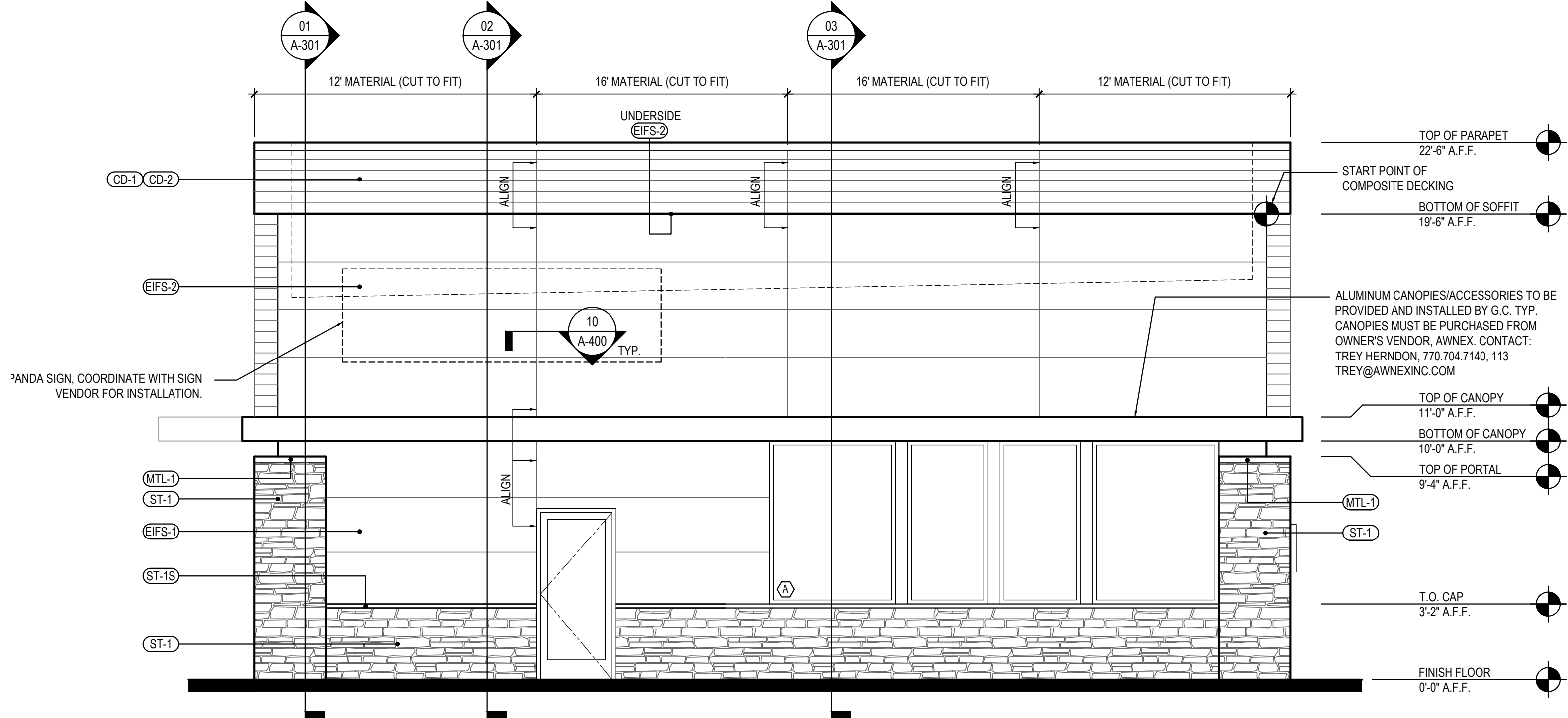
3

Scale= NTS

A-200



NORTH ELEVATION 2  
Scale= 1/4" = 1'-0" A-200



SOUTH ELEVATION 1  
Scale= 1/4" = 1'-0" A-200



PANDA RESTAURANT GROUP INC.

1683 Walnut Grove Ave.  
Rosemead, California  
91770

Telephone: 626.799.9898  
Facsimile: 626.712.8288

All ideas, designs, arrangement and plans indicated or represented by this drawing are the property of Panda Express Inc. and were created for use on this specific project. None of these ideas, designs, arrangements or plans may be used by or disclosed to any person, firm, or corporation without the written permission of Panda Express Inc.

REVISIONS:

02.08.22 ISSUE FOR BID

ISSUE DATE:

09.01.2021 ISSUE FOR PERMIT

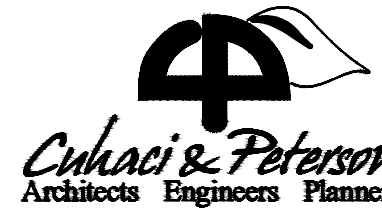
02.08.2022 ISSUE FOR BID

DRAWN BY:

JDV

PANDA PROJECT #: - S8-22-D8518

C&P PROJECT #: - 2210604



2600 Maitland Center Pkwy, Maitland, FL 32751

P (407) 661-9100

F (407) 661-9101

www.cph.com

Panda Express is a registered trademark of Panda Express Inc.

02.08.2022



PANDA EXPRESS

ALCOVY ROAD & GINKO LANE  
COVINGTON, GEORGIA 30014

A-200

EXTERIOR ELEVATIONS  
(VESTIBULE)

TRUE WARM & WELCOME 2300 R6