

SCALE: 1" = 300'

PARCEL MAP N° 37-16

IN THE UNINCORPORATED TERRITORY OF
THE COUNTY OF MONO, STATE OF CALIFORNIA,
BEING A DIVISION OF THE SOUTHEAST
QUARTER OF THE SOUTHEAST QUARTER
OF SECTION 23 AND THAT PORTION OF
THE SOUTH HALF OF THE SOUTHWEST
QUARTER OF SECTION 24, T. 35, R. 32 E.,
M.D.M., LYING WEST OF THE WEST LINE
OF U.S. HIGHWAY N° 6

ONE SHEET ONLY

No. 881
Filed for record this 28th
day of August, 1973, at 9:05 AM
M. in Book 1 of Parcel
Maps at Page 36 at the
request of Gordon C. Holmes.

Gordon C. Holmes
County Recorder

This map was prepared by me or under my direction
and is based upon a field survey in conformance with
the requirements of the Subdivision Map Act at the
request of Rodney Young in April, 1973. I hereby
certify that it conforms with the approved tentative
map and the conditions of approval thereof; that all
provisions of applicable state law and local ordinances
have been complied with.

This map has been examined this 28th day
of August, 1973, for conformance with the
requirements of Section 11575 of the
Subdivision Map Act.



Richard L. Foor P.E.
County Surveyor

The record bearing of the N 0°43'28"E
of the east line of Section 23, T. 35, R. 32 E.,
M.D.M., as shown on the Record of Survey
recorded in Book 5, Page 96 of Maps
was used as the basis of bearings
shown on this map.

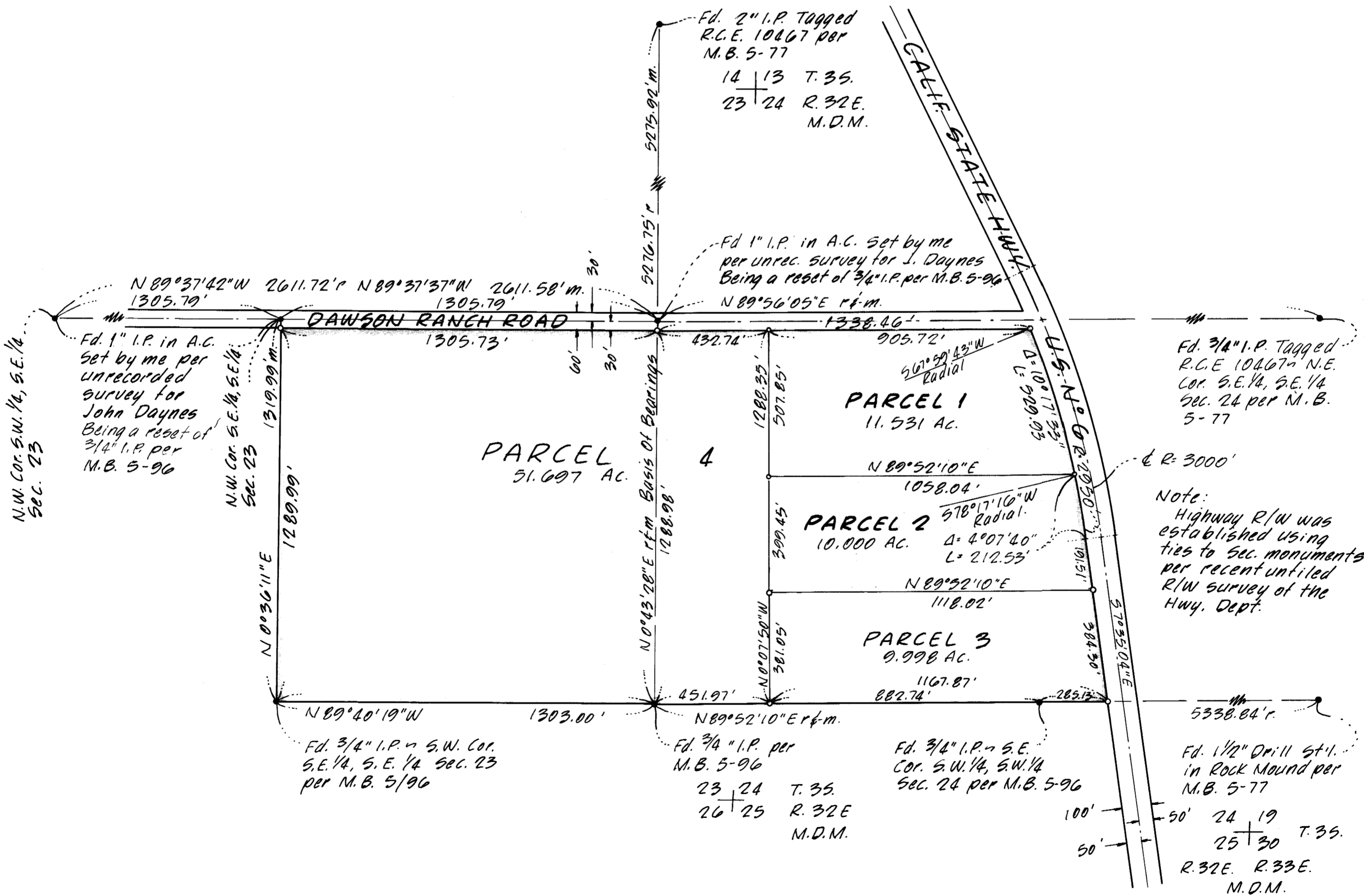
- indicates a found point as noted
- indicates a 1" I.P. & tag set, unless
otherwise noted.



Gordon C. Holmes
Gordon C. Holmes R.C.E. 10467

I hereby certify that this land division map was
approved by the Mono County Planning Commission
on the 28th day of August, 1973.

J. G. Bess
Planning Commission Chairman



Vol. 1 P/m - Pg. 36