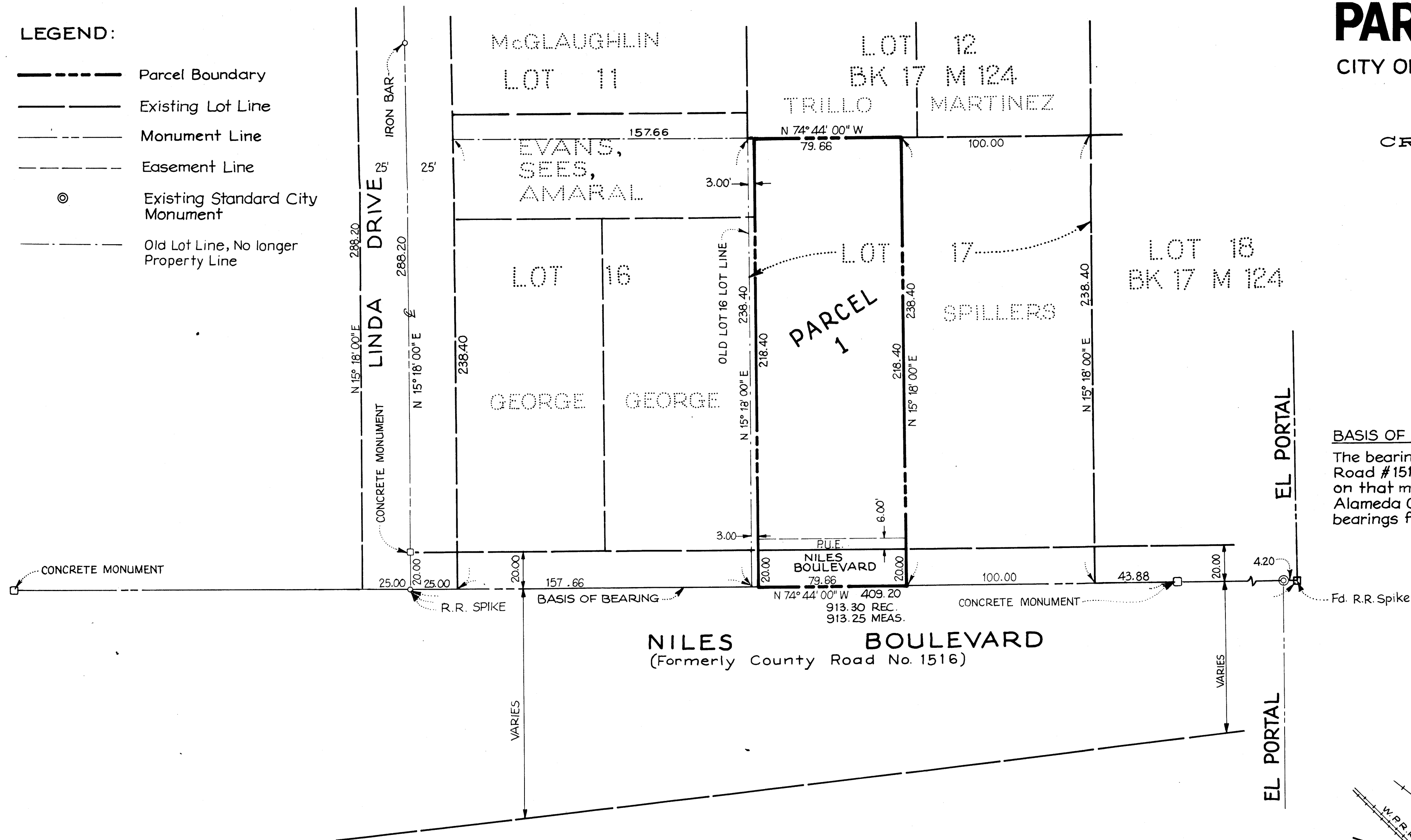


**LEGEND:**

- Parcel Boundary
- Existing Lot Line
- Monument Line
- Easement Line
- ⊙ Existing Standard City Monument
- Old Lot Line, No longer Property Line

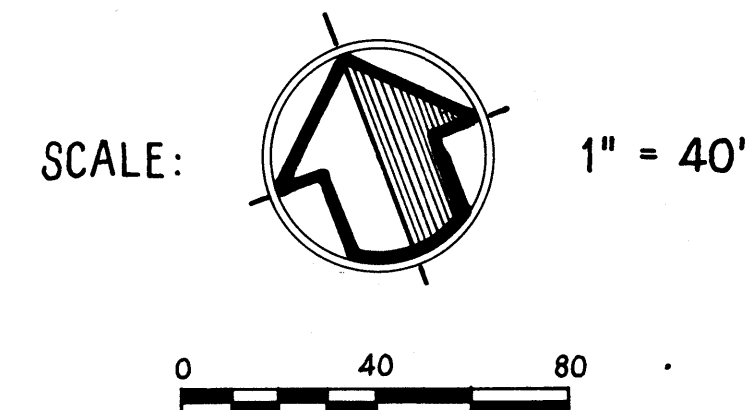


# PARCEL MAP 4196

CITY OF FREMONT, ALAMEDA COUNTY, CALIFORNIA

CONSISTING OF 2 SHEETS  
CREEGAN & D'ANGELO

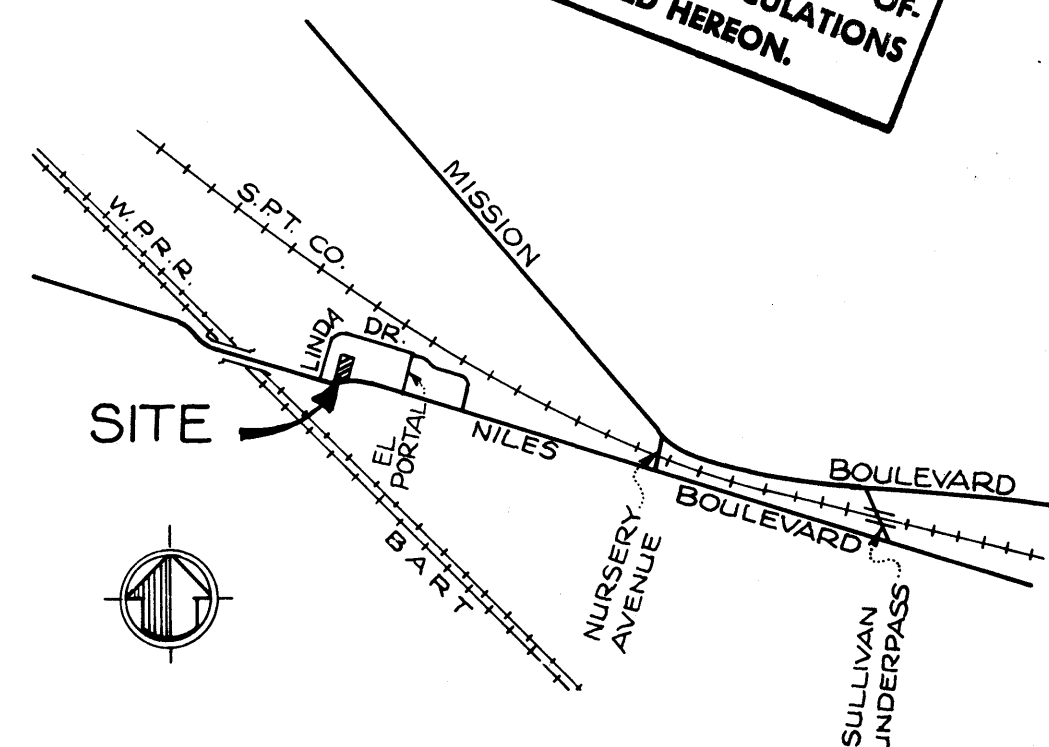
CONSULTING ENGINEERS  
FREMONT, CALIFORNIA  
May, 1984



**BASIS OF BEARINGS**

The bearing of N 74° 44' 00" W of the centerline of County Road #1516, commonly known as Niles Blvd., as shown on that map recorded in Book 17 of Maps @ Page 124, Alameda County Records, was used as the basis of bearings for this map.

**★ USE WITH CAUTION ★**  
THIS IS A PUBLIC WORKS DEPARTMENT  
WORKING COPY OF AN OFFICIAL MAP  
ON FILE IN THE OFFICE OF THE COUNTY  
RECORDER, COUNTY OF ALAMEDA. OF  
FICE INFORMATION OR CALCULATIONS  
MAY HAVE BEEN ADDED HEREON.



**VICINITY MAP**  
NO SCALE

*Filed 11-14-84*

*149/15*

**MAP BOOK 149 PAGE 15**

*51/671*