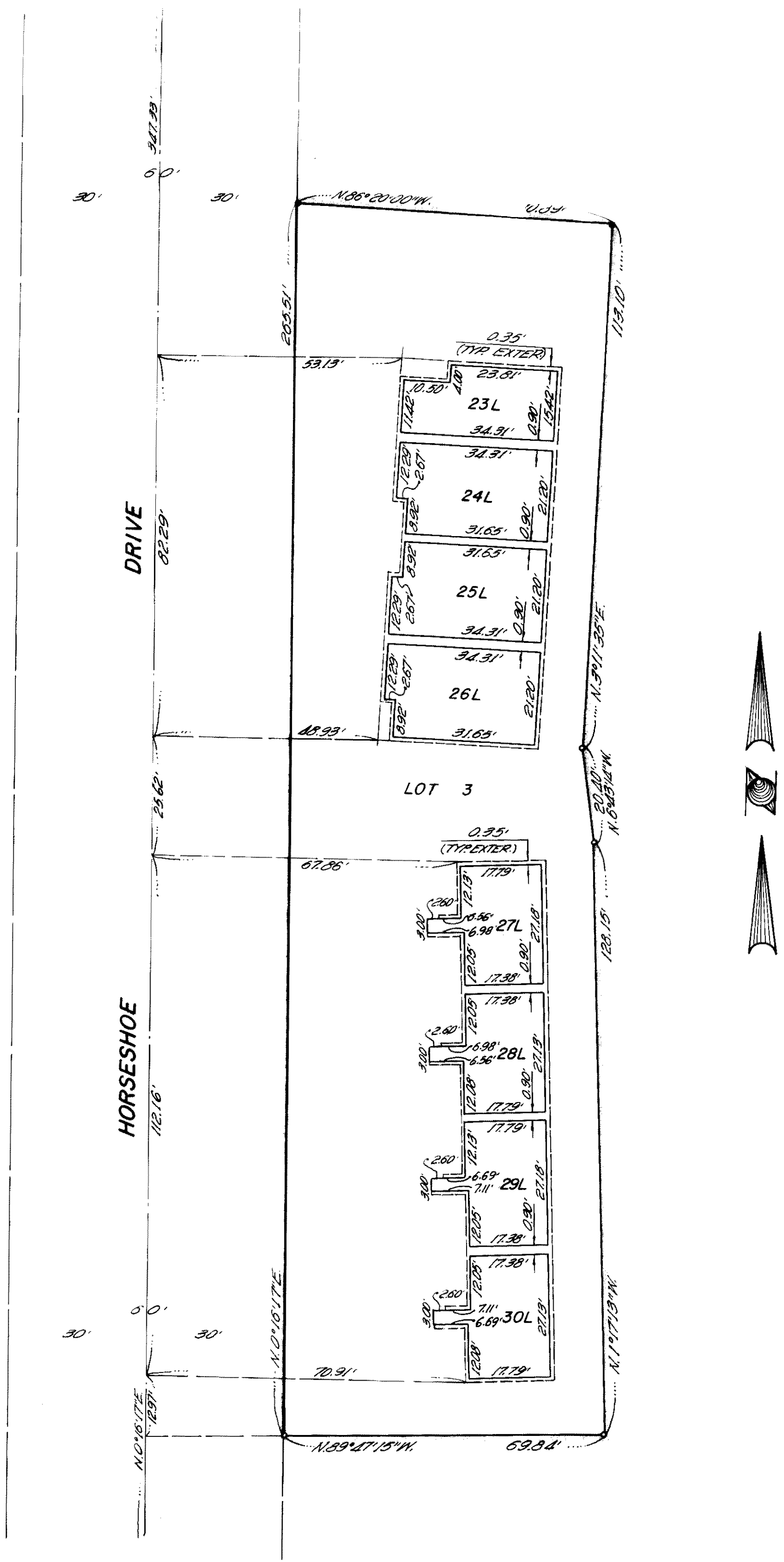


SCALE: 1" = 20'

SHEET 4 OF 8 SHEETS

MAMMOTH ESTATES UNIT NO. 2
IN THE UNINCORPORATED TERRITORY OF MONO COUNTY, CALIF.
FOR CONDOMINIUM PURPOSES



NOTES:
LOTS 1, 2 & 3 IS THE LAND AND REAL PROPERTY INCLUDED WITHIN THE BLUE BORDER OF THIS SUBDIVISION, EXCEPT THERE FROM UNITS 4 THRU 30 INCLUSIVE AS SHOWN AND DESCRIBED HEREON. EACH UNIT IS A SUBDIVISION OF AIR SPACE.
EACH PARCEL SHOWN AND DESIGNATED WITH A NUMBER OTHER THAN NUMBER 1, 2 OR 3 IS A SUBDIVISION OF AIR SPACE.
UNITS 4 THRU 7 INCLUSIVE AND 12 THRU 30 INCLUSIVE ARE EACH COMPOSED OF TWO PARCELS, ONE DESIGNATED WITH A UNIT NUMBER FOLLOWED BY THE SUFFIX "L" AND THE OTHER DESIGNATED BY THE SAME NUMBER FOLLOWED BY THE SUFFIX "U".
UNITS 8 THRU 11 INCLUSIVE ARE EACH COMPOSED OF BUT ONE PARCEL DESIGNATED WITH THE NUMBER USED TO DESIGNATE THE UNIT.
ON ALL PARCELS THE SOLID LINES INDICATE INTERIOR FACES OF WALLS OF A BUILDING CONSTRUCTED OR TO BE CONSTRUCTED.
THE BOUNDARIES OF THE PARCELS SHOWN HEREON ARE MEASURED TO THE INTERIOR SURFACES OF THE VERTICAL, HORIZONTAL AND INCLINED PLANES AT THE LIMITS OF THE DIMENSIONS OR ELEVATIONS, THE ELEVATIONS

LEGEND:
● FOUND 2" I.P. PER MAMMOTH ESTATES UNIT NO. 2, JUNE 3, 1968, PAGES 110, 110a & 110b.
○ FOUND SPIKE AND TIN.
○ SET 2" I.P.
NOTES CONTINUED:
OF WHICH ARE SHOWN ON SHEET NO. 3.
THE SURVEY TIES SHOWN HEREON ARE TO THE VERTICAL PROJECTION OF THE OUTSIDE FACE OF STUD WALLS INDICATED BY THE DASHED LINES HEREON. ALL DISTANCES ARE MEASURED AT RIGHT ANGLES UNLESS OTHERWISE SPECIFIED. AREAS DESIGNATED BY THE LETTER B ARE BALCONIES ADJACENT TO PARCELS AS SHOWN AND ARE NOT A PART OF THE UNITS AND PARCELS. AREAS DESIGNATED BY THE LETTER F ARE FIREPLACE PORCHES ADJACENT TO PARCELS AS SHOWN AND ARE NOT A PART OF THE UNITS AND PARCELS.