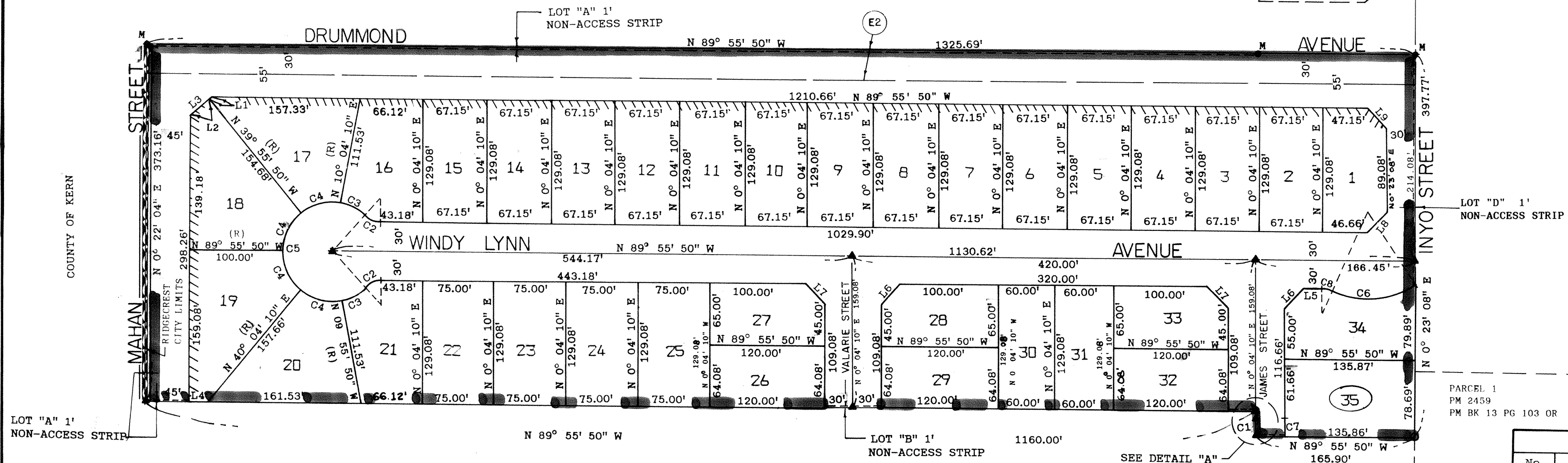


BASIS OF BEARING: THE BEARING OF N 89° 55' 50" W FOR THE NORTH LINE OF THE NE 1/4 OF SECTION 32, T. 26 S., R. 40 E., M.D.M., AS SHOWN ON RECORD OF SURVEY MAP RECORDED IN BOOK 6, PAGE 87 IN THE OFFICE OF THE COUNTY RECORDER WAS USED AS THE BASIS OF BEARINGS FOR THIS MAP.

TR 4791
UNIT A
BK 35 PG
115-116

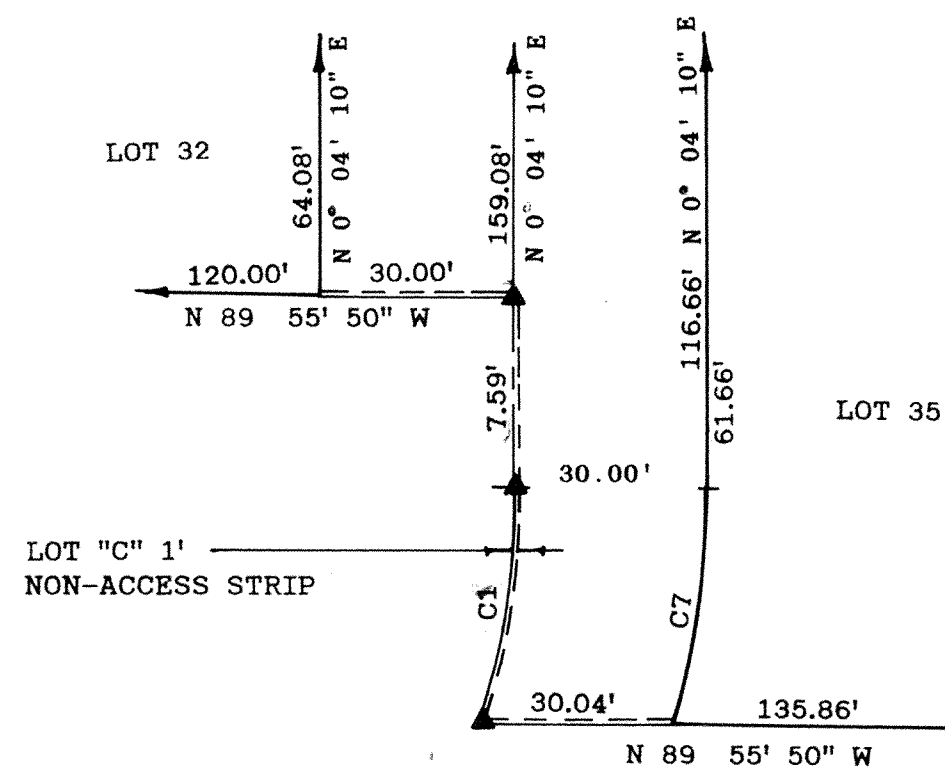


LEGEND:

SYMBOL	DESCRIPTION
•	MONUMENT OF RECORD. SEE SHEET 3 FOR DESCRIPTION.
▲	CONCRETE MONUMENT WITH BRASS CAP STAMPED R.C.E. 22612 TO BE SET.
○	2" IRON PIPE TAGGED R.C.E. 22612 TO BE SET.
(E2)	EASEMENT OF RECORD. SEE SHEET 1 FOR RECORD DATA.
C1	CURVE DATA. SEE HEREON FOR MEASUREMENTS.
L1	LINE DATA. SEE HEREON FOR MEASUREMENTS.
////	ABANDONMENT OF VEHICULAR INGRESS, EGRESS AND ACCESS RIGHTS.

CURVE DATA					
NO.	ANGLE	RADIUS	TANGENT	LENGTH	CORR.
C1	3° 10' 28"	307.28	8.52	17.03	17.02
C2	42° 50' 00"	25.00	9.81	18.69	18.26
C3	32° 50' 00"	50.00	14.73	28.65	28.26
C4	50° 00' 00"	50.00	23.32	43.63	42.26
C5	265° 40' 00"	50.00	-	231.84	-
C6	57° 30' 13"	90.00	49.38	90.33	86.58
C7	2° 53' 31"	337.28	8.51	17.02	17.02
C8	24° 04' 14"	25.00	5.33	10.50	10.43

LINE DATA		
No.	BEARING	LENGTH
L1	N 45° 13' 07" E	3.23'
L2	N 45° 13' 07" E	24.98'
L3	N 45° 13' 07" E	28.21'
L4	N 89° 55' 50" W	17.35'
L5	N 89° 55' 50" W	19.82'
L6	N 45° 04' 10" E	28.28'
L7	N 44° 55' 50" W	28.28'
L8	N 45° 13' 39" E	28.21'
L9	N 44° 46' 21" W	28.36'



DETAIL "A"
N.T.S.

TRACT 4973 UNIT A

ACCEPTED FOR RECORD AND FILED IN BOOK 36 OF MAPS, PAGE 96 IN THE OFFICE OF THE COUNTY RECORDER OF THE COUNTY OF KERN THIS 5TH DAY OF JANUARY 1988, AT 8:00 A.M.

GALE S. ENSTAD
COUNTY RECORDER OF THE
COUNTY OF KERN

BY: Shirley J. Stacey
Deputy Recorder

#282

96