



**Chick-fil-A**

Chick-fil-A  
5200 Buffington Road  
Atlanta, Georgia 30349-2998

**INTERPLAN**  
ARCHITECTURE  
ENGINEERING  
INTERIOR DESIGN  
PROJECT MANAGEMENT

604 COURTLAND STREET  
SUITE 100  
ORLANDO, FLORIDA 32804  
PH 407.645.5008  
FX 407.629.9124

SEAL:  
UNLESS THE WORD "NOT FOR CONSTRUCTION"  
SIGNATURE AND SEAL APPEAR TO THE RIGHT

**CHICK-FIL-A**  
Cherokee Place, FSR  
115 Cherokee Place, Cartersville, GA  
30121

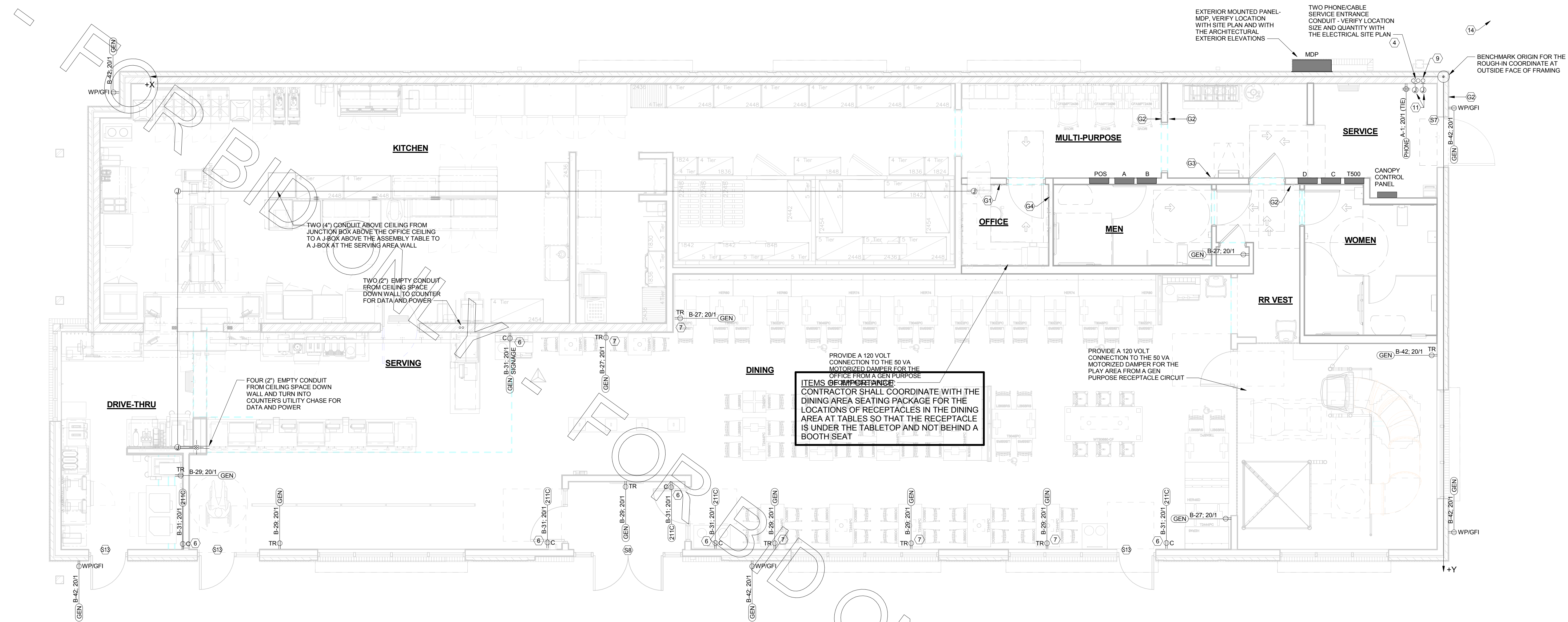
**FSR# 00534**

REVISION SCHEDULE  
NO. DATE DESCRIPTION

CONSULTANT PROJECT # 2017.0149  
PRINTED FOR Bld  
DATE 11.20.17  
DRAWN BY MB

SHEET  
POWER AND SYSTEMS  
PLAN - LRG

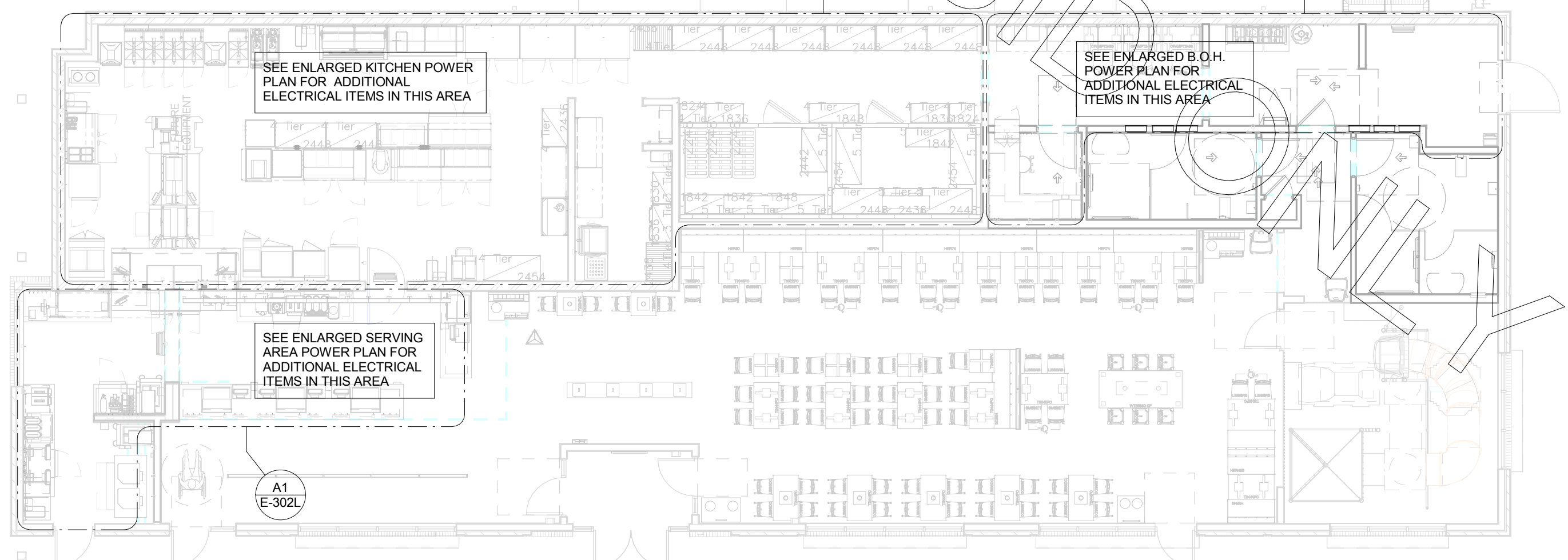
SHEET NUMBER  
**E-221L**



**C1** POWER AND SYSTEMS PLAN - LRG  
1/4\" = 1'-0"

REFER TO  
SHEET E-003  
FOR KEYNOTES

REFER TO THE ELECTRICAL SITE PLAN FOR  
ADDITIONAL REQUIREMENTS FOR THE  
DRIVE-THRU CASH STATION ("D" KEYNOTES)



**A1** ELECTRICAL KEY PLAN - LRG  
1/8\" = 1'-0"

3/12/2018 4:35:45 PM