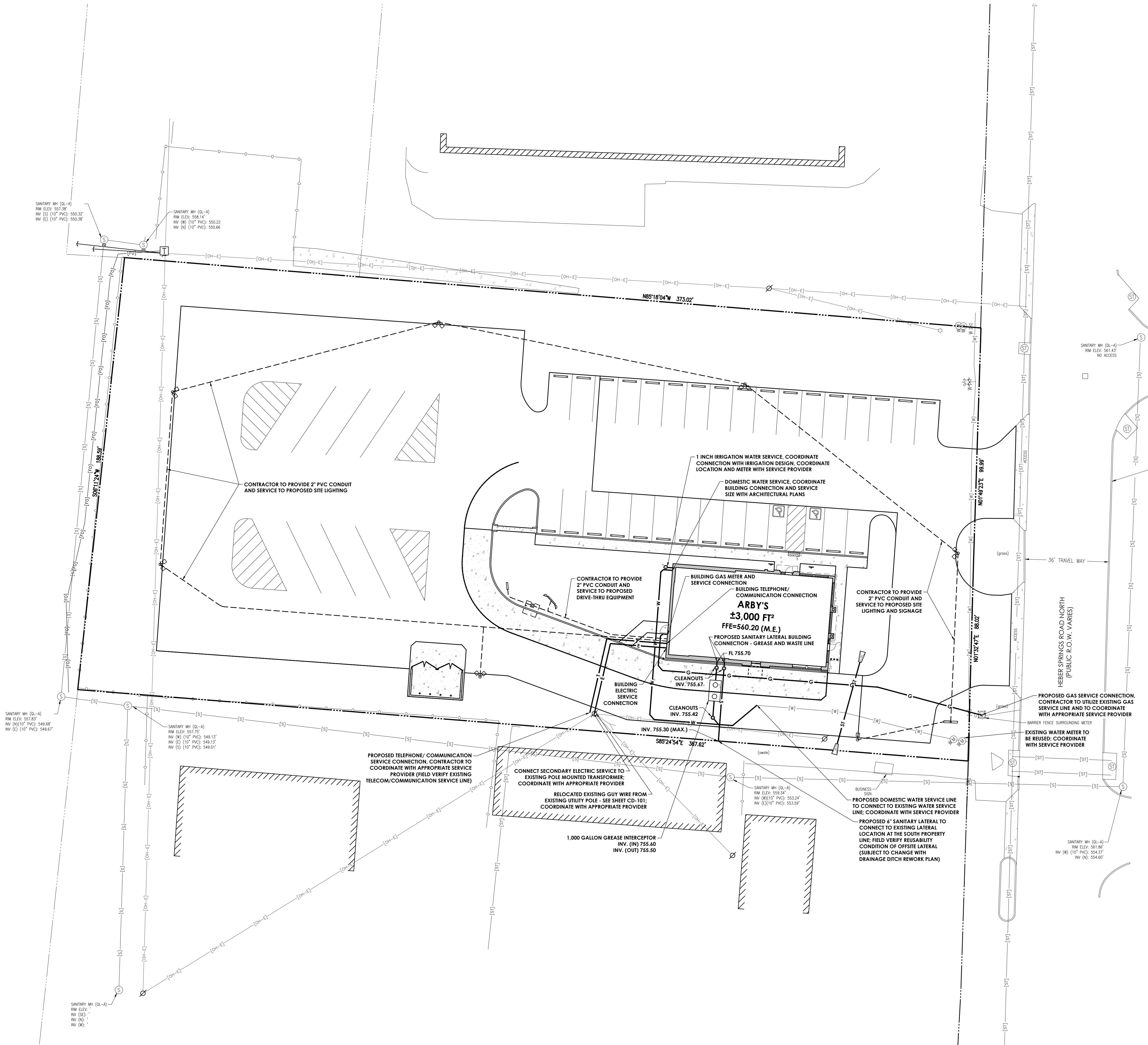


p:\2021\10\22 - rb american group - heber springs, on\drawings\cu-101.dwg  
p:\2021\10\22 - rb american group - heber springs, on\drawings\cu-101.dwg



#### LEGEND OF EXISTING FEATURES

---	PROPERTY LINE	⊕	BENCHMARK
---	RIGHT-OF-WAY LINE	○ RBC	MONUMENT
---	SETBACK LINE	△	SECTION CORNER
---	EASEMENT	ET HC	TRANSFORMER
---	SECTION LINE	E M E	ELECTRIC METER
---	CENTERLINE	⊕	ELECTRIC MANHOLE
---	799	⊕	POWER POLE   GUY WIRE
---	800	⊕	LIGHT POLE
---	INDEX CONTOUR	⊕	TELEPHONE PEDESTAL
---	TELEPHONE UNDER GR.	⊕	TELEPHONE MANHOLE
---	TELEPHONE OVERHEAD	⊕	GAS MARKER
---	FIBER OPTIC SERVICE	⊕	ELECTRIC MARKER
---	GAS SERVICE	⊕	TRAFFIC POLE
---	POWER UNDERGROUND	⊕	TRAFFIC MANHOLE
---	POWER OVERHEAD	⊕	GAS METER
---	WATER SERVICE	⊕	GAS VALVE
---	SANITARY SEWER	⊕	STORM MANHOLE
---	STORM SEWER	⊕	SANITARY MANHOLE
---	POND NORMAL POOL	⊕	STORM INLETS
---	EX. FLOWLINE	⊕	CLEAN-OUT
---	CHAIN LINK FENCE	⊕	DOWNSPOUT
---	FARM FENCE	⊕	FIRE HYDRANTS
---	WOOD FENCE	⊕	WATER METER
---	IRON FENCE   RAILING	⊕	WATER VALVES
---	BUILDING   STRUCTURE	⊕	POST INDICATOR VALVE
---	EX. BUILDING OVERHEAD	⊕	FIRE DEPARTMENT CONN.
---	RIM	⊕	SIGNS
---	INV.	⊕	MAILBOX
---	FFE	⊕	ADA PARKING
---		⊕	PARKING COUNT
---		⊕	TREES
---		⊕	SHRUB
---		⊕	SPOT GRADE

#### UTILITY PLAN LEGEND - PROPOSED

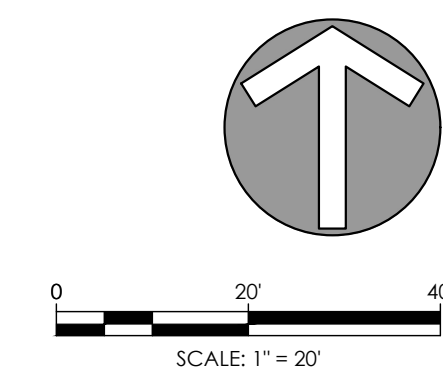
ST	STORM SEWER	⊕	SANITARY MANHOLE
S	SANITARY SEWER	⊕	SANITARY SEWER CLEANOUT
W	WATER SERVICE	⊕	FIRE HYDRANT
F	FIRE SERVICE	⊕	WATER METER
G	GAS SERVICE	⊕	WATER VALVE
T	TELEPHONE / COMMUNICATION	⊕	POST INDICATOR VALVE
OH-T	OVERHEAD TELEPHONE / COMMUNICATION	⊕	FIRE DEPARTMENT CONN.
E	ELECTRIC SERVICE	⊕	RIM ELEVATION
OH-E	OVERHEAD ELECTRIC SERVICE	⊕	INVERT ELEVATION
⊕	TRANSFORMER	⊕	FINISHED FLOOR ELEVATION
⊕	POWER POLE	⊕	STORM MANHOLE
⊕	LIGHT POLE	⊕	STORM INLETS
⊕		⊕	STORM ENDSECTION
⊕		⊕	STORM SEWER CLEANOUT
⊕		⊕	DOWNSPOUT

#### UTILITY CONTACTS

<b>ELECTRIC SERVICE</b> FIRST ELECTRIC COOPERATIVE 150 INDUSTRIAL PARK ROAD HEBER SPRINGS, AR 72543 CONTACT: JESSY BEAVER P. (800) 489-7405 x2228 E. jessy.beaver@fec.coop	<b>WATER SERVICE</b> HEBER SPRINGS WATER AND WASTEWATER UTILITY 1108 W. FRONT STREET HEBER SPRINGS, AR 72543 CONTACT: PAUL GRAHAM P. (501) 362-3422 E. paul@heberspringswater.com
<b>PHONE SERVICE</b> AT&T 1141 HIGHWAY 258 NORTH HEBER SPRINGS, AR 72543 CONTACT: P. (501) 250-2256 E.	<b>SEWER DISTRICT</b> HEBER SPRINGS WATER AND WASTEWATER UTILITY 1108 W. FRONT STREET HEBER SPRINGS, AR 72543 CONTACT: PAUL GRAHAM P. (501) 362-3422 E. paul@heberspringswater.com
<b>GAS SERVICE</b> CENTERPOINT ENERGY 2205 E. ROOSEVELT ROAD LITTLE ROCK, AR 72206 CONTACT: P. (800) 992-7552 E.	

#### UTILITY NOTES

- CONTRACTOR TO FIELD VERIFY THE CONDITION OF ALL EXISTING UTILITIES TO BE REUSED AND COORDINATE WITH THE PROVIDER(S)
- PROPOSED SANITARY LATERAL INVERTS SUBJECT TO CHANGE PER EXISTING LATERAL VERIFICATION
- PROPOSED SANITARY LATERAL CONNECTION SUBJECT TO CHANGE PER DRAINAGE DITCH REWORK PLAN



#### REVISION BLOCK



DATE 10/22/2021	
DRAWN BY KPB	CHECKED BY TLP

## HAMILTON DESIGNS

A LIMITED LIABILITY COMPANY

11 Municipal Drive, Suite 300  
Fishers, Indiana 46038  
P. (317) 570-9800  
www.hamilton-designs.com

## ARBY'S | HEBER SPRINGS

1432 Heber Springs Road  
Heber Springs, Arkansas 72543

## RB AMERICAN GROUP, LLC

6200 Oak Tree Blvd., Suite 250  
Independence, Ohio 44131

CONSTRUCTION PLANS FOR:

PROJECT NO.  
2021-0122

DATE  
10/22/2021

SCALE  
1" = 20'

SHEET NAME  
UTILITY PLAN

SHEET NO.

CU-101