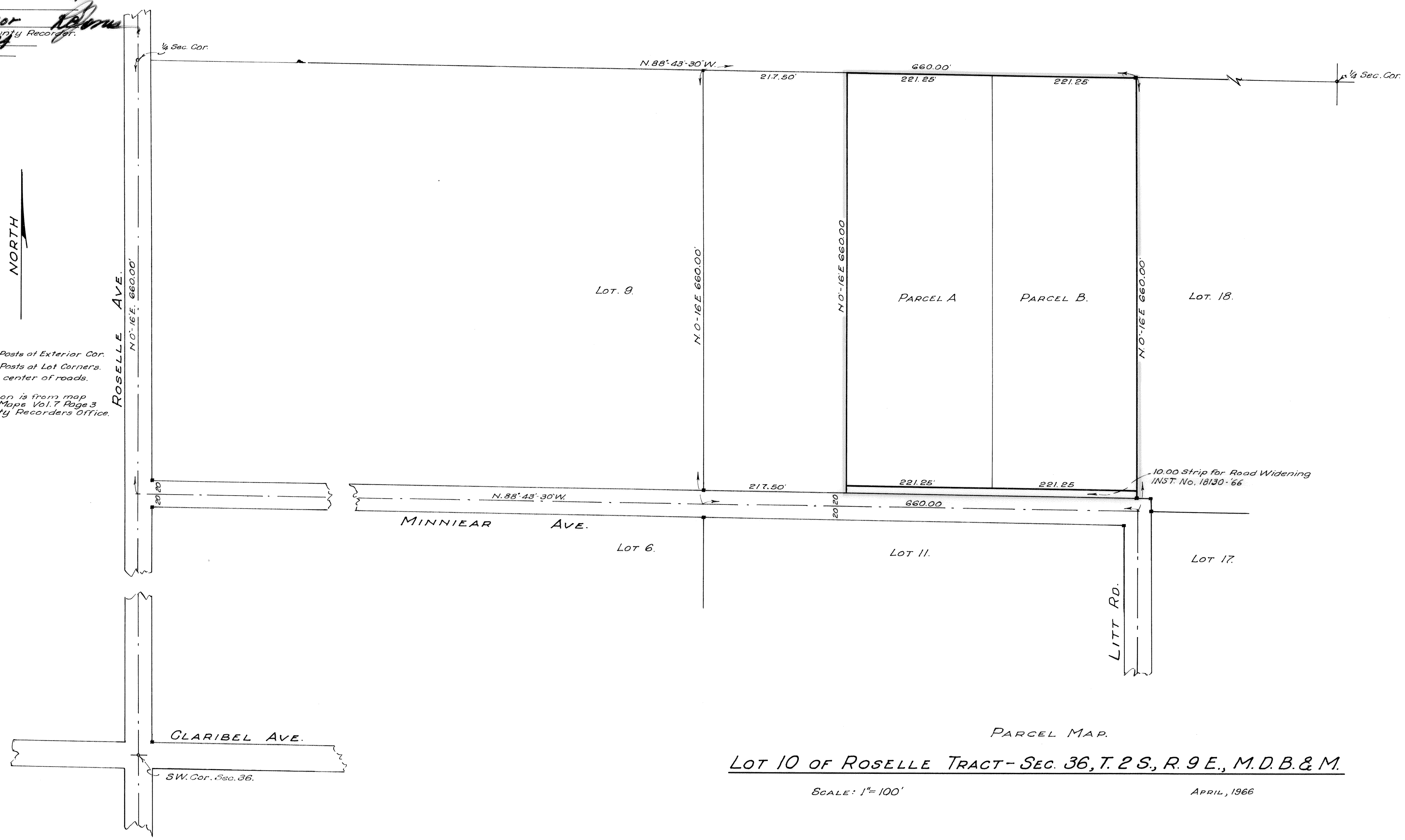


FILED FOR RECORD  
This 25 day of May 1966  
At 10:10 A.M.  
PARCEL MAPS Vol. 1 Page 145  
At request of  
Surveyor R. G. Barhite  
Robt Jones, County Recorder.  
Inst. No. 18784  
Fee. \$5.00

NORTH

LEGEND:-  
o 4"x4" Rwd Posts at Exterior Cor.  
■ 3"x3" Rwd. Posts at Lot Corners.  
Distances to center of roads.  
Data shown hereon is from map  
of Roselle Tract Maps Vol. 7 Page 3  
Stanislaus County Records Office.



PARCEL MAP.  
LOT 10 OF ROSELLE TRACT - SEC. 36, T. 2 S., R. 9 E., M. D. B. & M.

SCALE: 1" = 100'

APRIL, 1966

This map has been examined this 24<sup>th</sup> day of  
MAY 1966 for conformance with the requirements  
of Section 11575 of the Subdivision Map Act.

RICHARD G. BARHITE  
County Surveyor.  
By *[Signature]* Deputy.

This map was prepared by me and was compiled from record data  
in conformance with the requirements of the Subdivision Map Act  
at the request of: JOSEPH G. JONES AND ERMA M. JONES.  
on April 20, 1966. I hereby certify that it conforms to the approved  
tentative map and the conditions of approval thereof; that all provis-  
ions of the applicable state law and local ordinances have been com-  
plied with.

*[Signature]*  
Oliver Deutsch Reg. Civil Engr. 6693