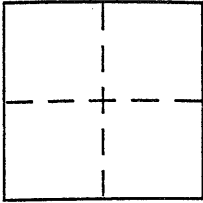


**CORNER RECORD**Document Number CR 1214  
City of OAKLAND County of ALAMEDA, CaliforniaBrief Legal Description LOTS 492 & 493(S M 46)**CORNER TYPE**

Government Corner ☐ Control ☐  
 Meander ☐ Property ☒  
 Rancho ☐ Other ☐  
 Date of Survey 4-12-99

**COORDINATES (Optional)**

N. \_\_\_\_\_  
 E. \_\_\_\_\_  
 Zone \_\_\_\_\_ NAD27 ☐ NAD83 ☐  
 NAD83 Epoch \_\_\_\_\_  
 Elev. \_\_\_\_\_  
 Vert. Datum: NGVD29 ☐ NAVD88 ☐  
 Meas. Units: Metric ☐ Imperial ☐

Corner - Left as found ☐ Found and tagged ☐ Established ☒ Reestablished ☐ Rebuilt ☐

Identification and type of corner found: Evidence used to identify or procedure used to establish or reestablish the corner:

FOUND POINTS AS SHOWN ON REVERSE.

A description of the physical condition of the monument as found and as set or reset: \_\_\_\_\_

SET POINTS AS SHOWN ON REVERSE.

**SURVEYOR'S STATEMENT**

This Corner Record was prepared by me or under my direction in conformance with  
 the Land Surveyor's Act on 4-16-99

Signed [Signature] P.L.S. No. 7136

**COUNTY SURVEYOR'S STATEMENT**

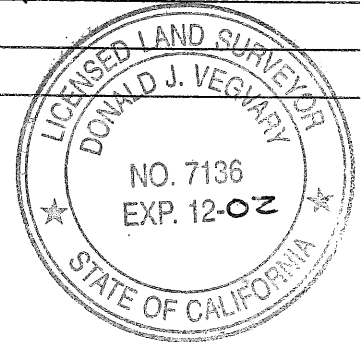
This Corner Record was received 4-19-1999

and examined and filed 1-20-1999

Signed [Signature] P.L.S. or R.C.E. No. 5726

Title DEPUTY COUNTY SURVEYOR

County Surveyor's Comment \_\_\_\_\_



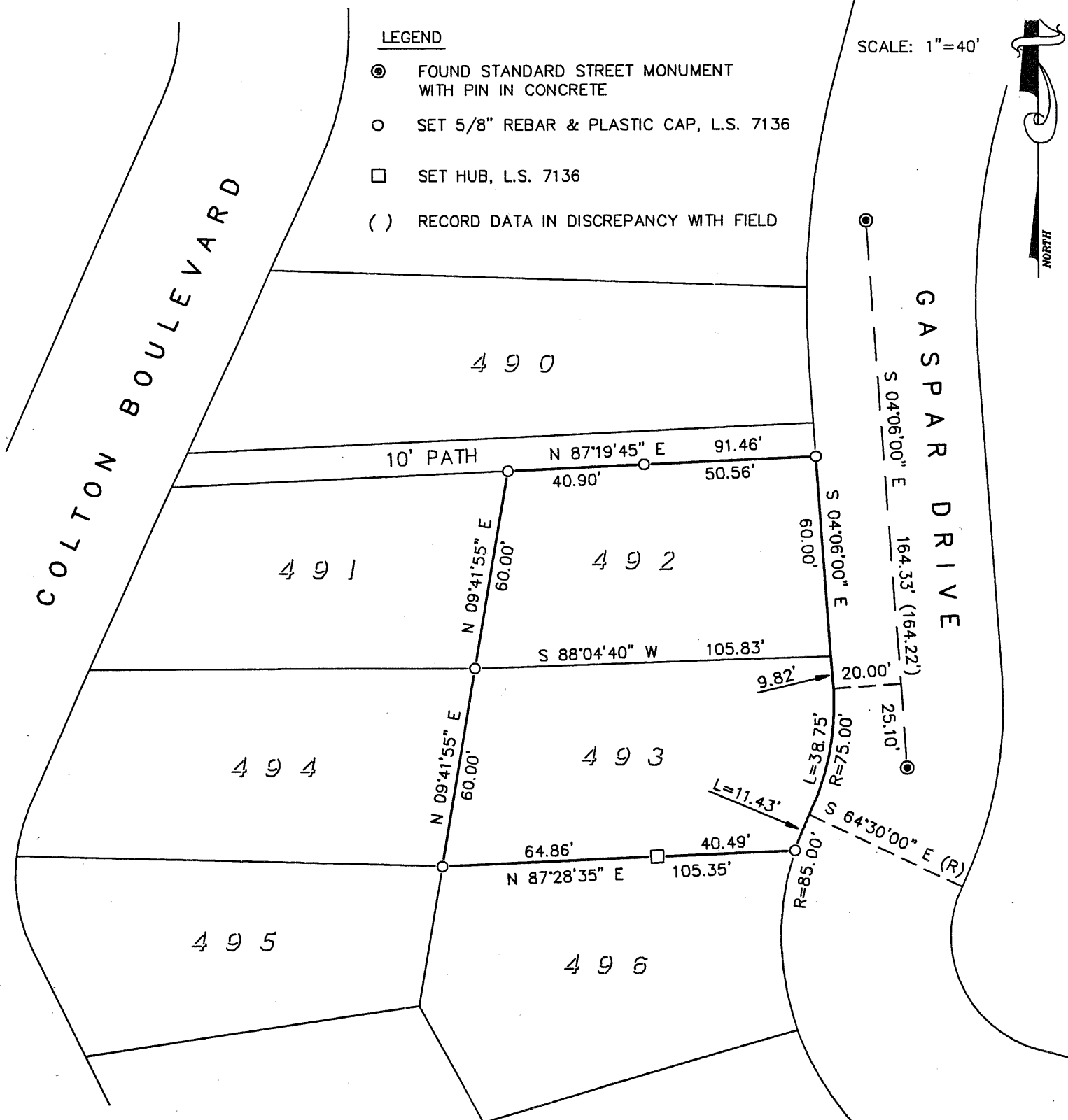
# CORNER RECORD

LOTS 492 & 493  
MONTCLAIR HIGHLANDS EXTENSION  
5 M 46

## LEGEND

- ⊙ FOUND STANDARD STREET MONUMENT WITH PIN IN CONCRETE
- SET 5/8" REBAR & PLASTIC CAP, L.S. 7136
- SET HUB, L.S. 7136
- ( ) RECORD DATA IN DISCREPANCY WITH FIELD

SCALE: 1"=40'



VEGVARY & VEGVARY  
CIVIL ENGINEERING - LAND SURVEYING  
40 TERRA TERESA  
LAFAYETTE, CA 94549  
(925) 947-1051