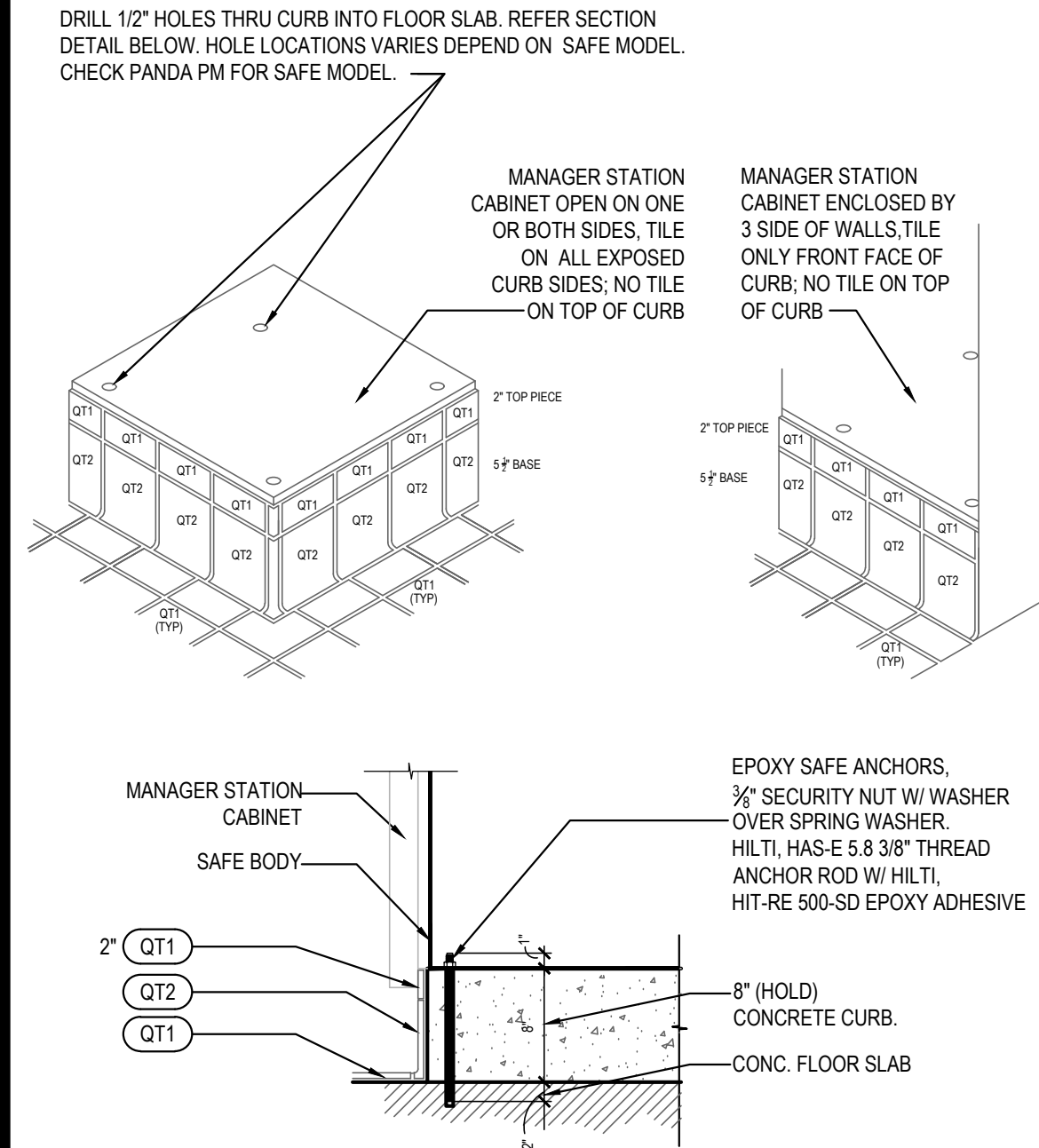


MANAGER CABINET STATION CURB SIZES REFER FLR. PLAN FOR LOCATION

- 1) IF CABINET IS ENCLOSED BY 3 SIDE OF WALLS:
8" H X 24" W X 48-1/2" L (CONCRETE CURB ONLY, NOT INCLUDE TILE BASE)
TILE ONLY ON FRONT FACE (EXPOSED CURB), THIS APPLY TO PROTOTYPE BUILDING LAYOUTS.
- 2) IF CABINET ENCLOSED BY ONLY (1) ONE WALL:
8" H X 24" W X 46" L (CONCRETE CURB ONLY, NOT INCLUDE TILE BASE)
TILE FRONT AND (1) SIDE FACE (EXPOSED CURB)
- 3) IF CABINET OPEN WITH NO WALLS:
8" H X 24" W X 46" L (CONCRETE CURB ONLY, NOT INCLUDE TILE BASE)
TILE ALL 3 SIDES OF THE CURB



MGR. STATION & SAFE CURB

20

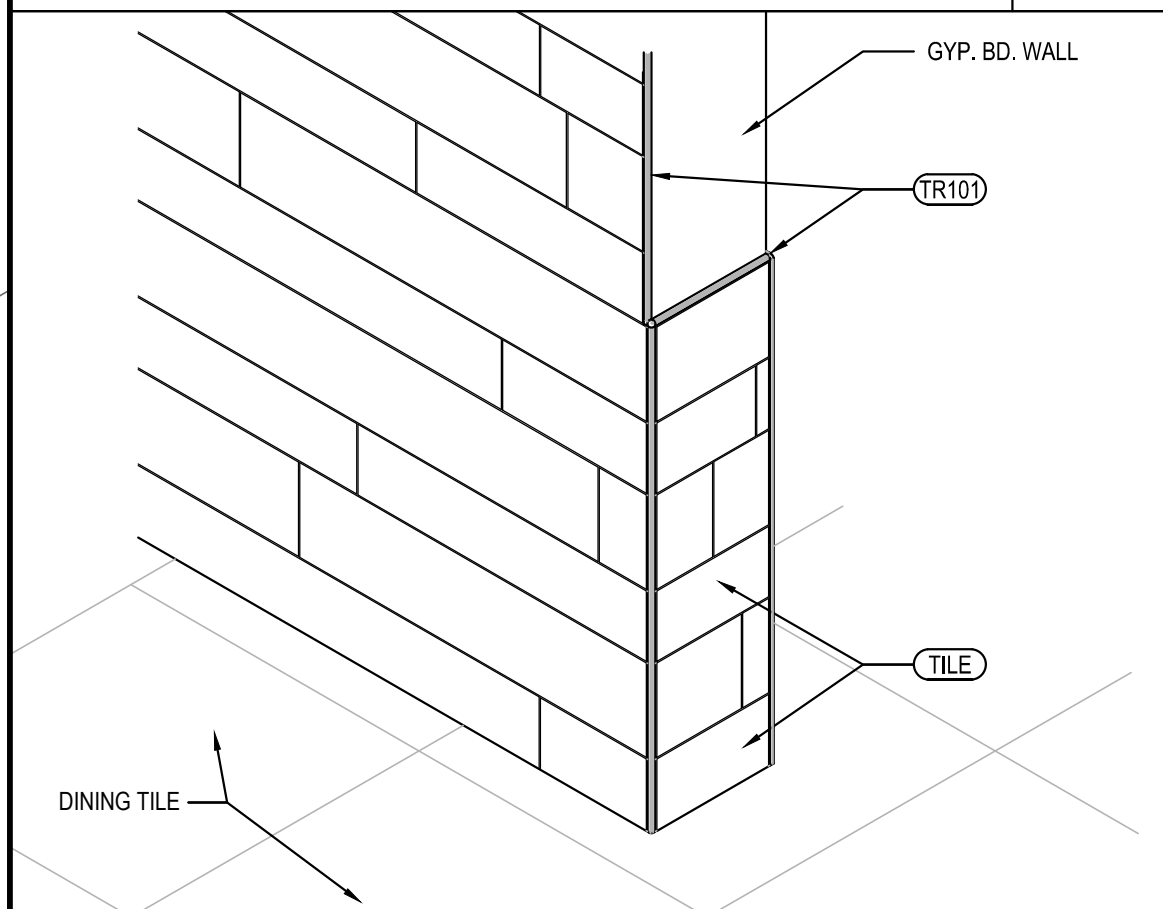
Scale= 1 1/2" = 1'-0"

NOT USED

14

Scale= 3/4" = 1'-0"

A-404

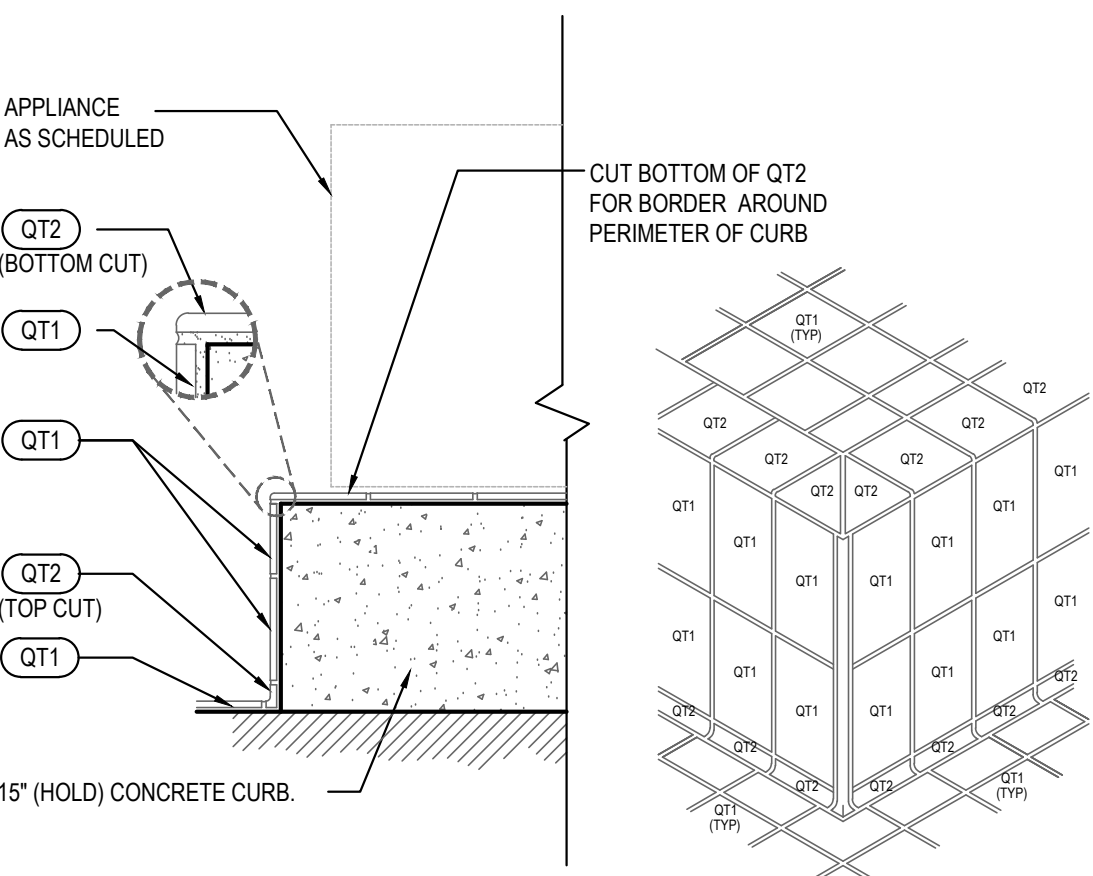


OUTSIDE CORNER ISOMETRIC

13

Scale= 3/4" = 1'-0"

A-404

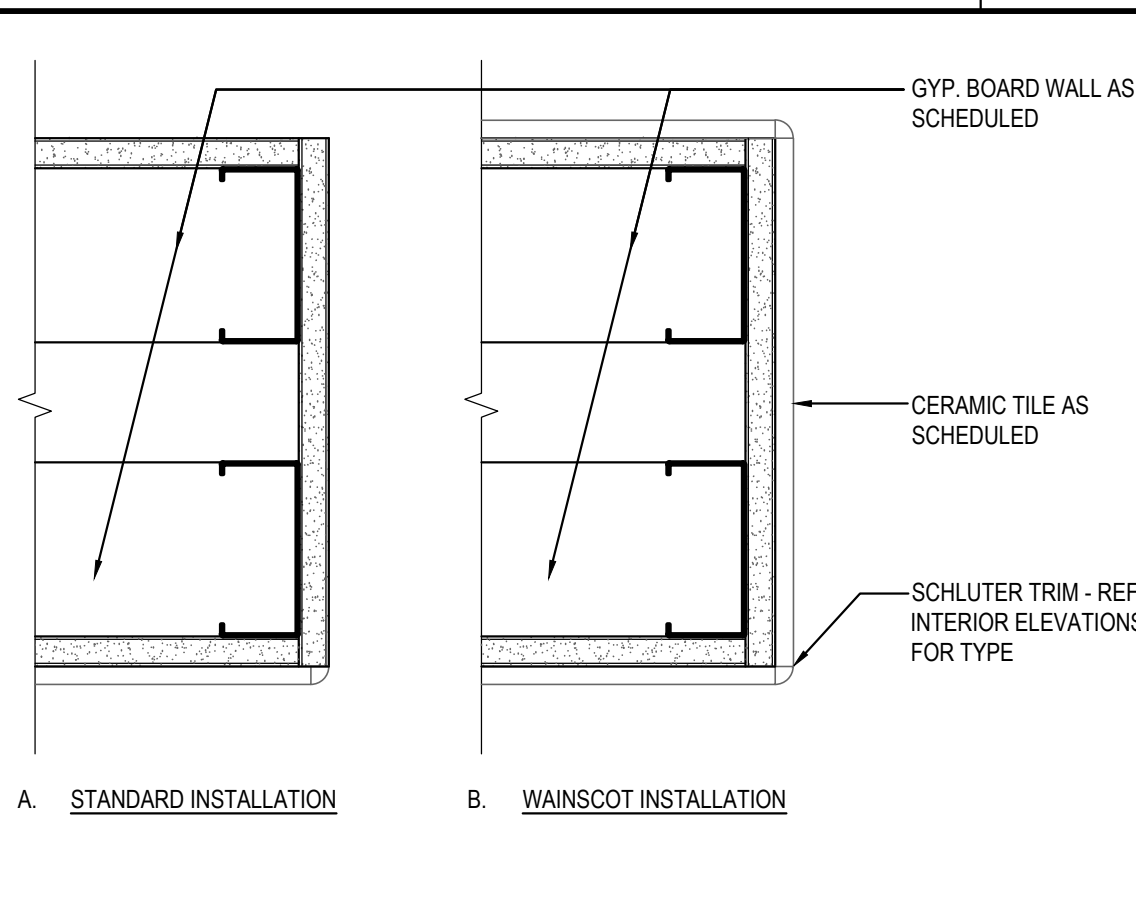


15" CURB DETAIL

12

Scale= 1 1/2" = 1'-0"

A-404

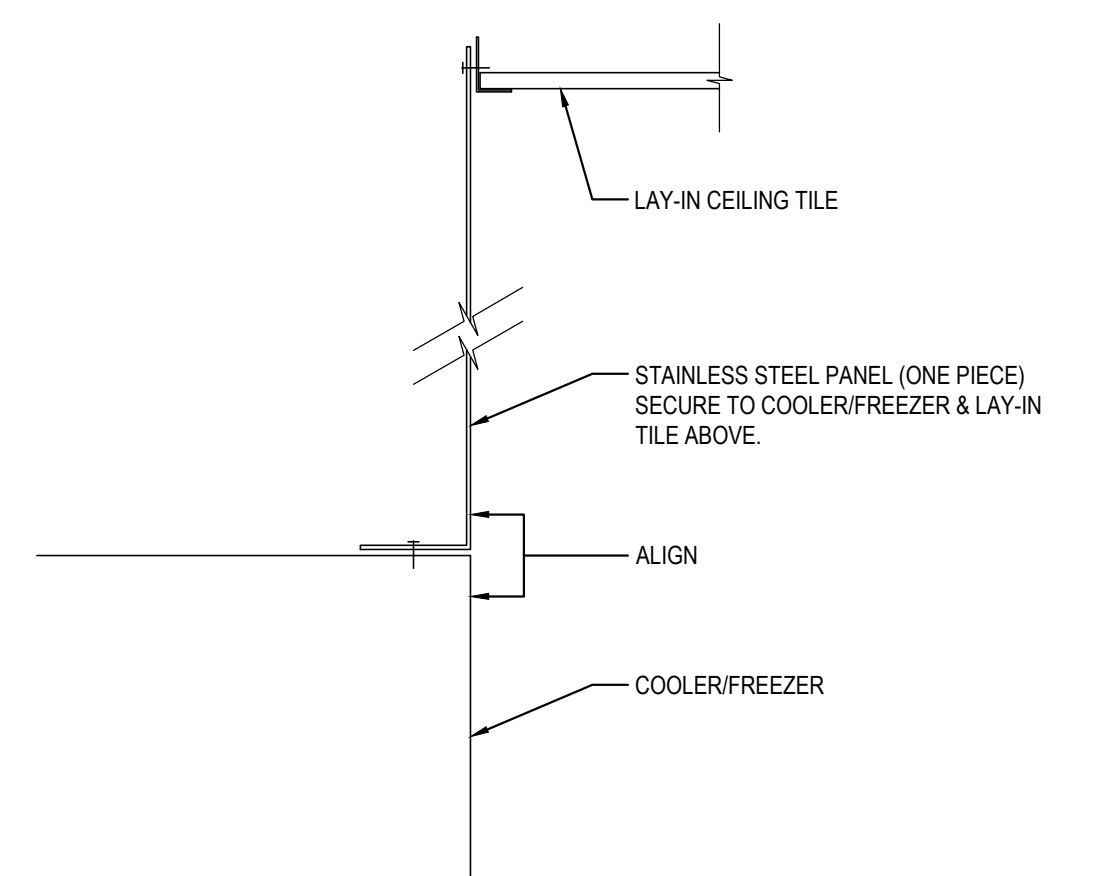


PLAN SECTION WALL DETAIL

11

Scale= 3" = 1'-0"

A-404

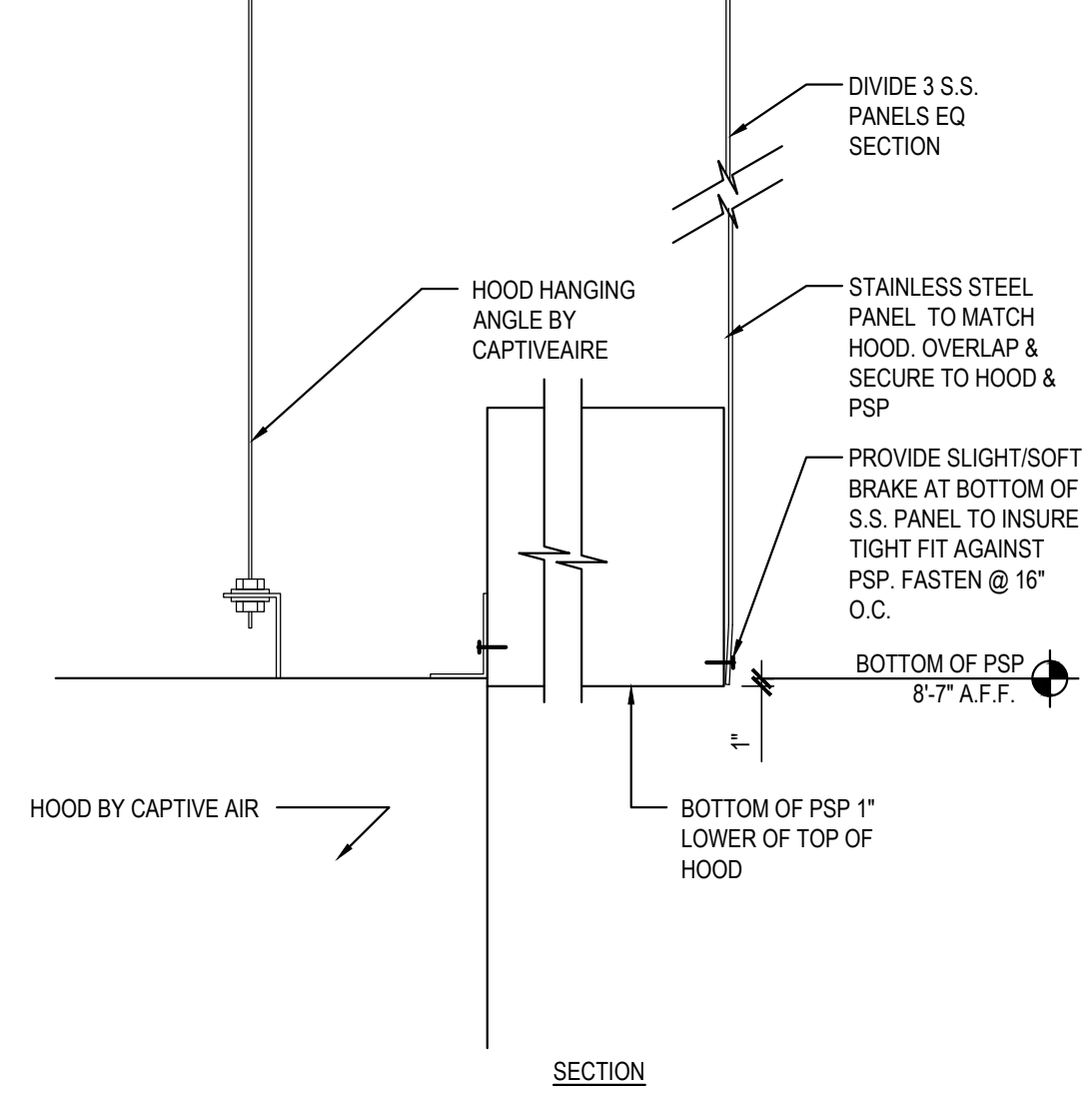
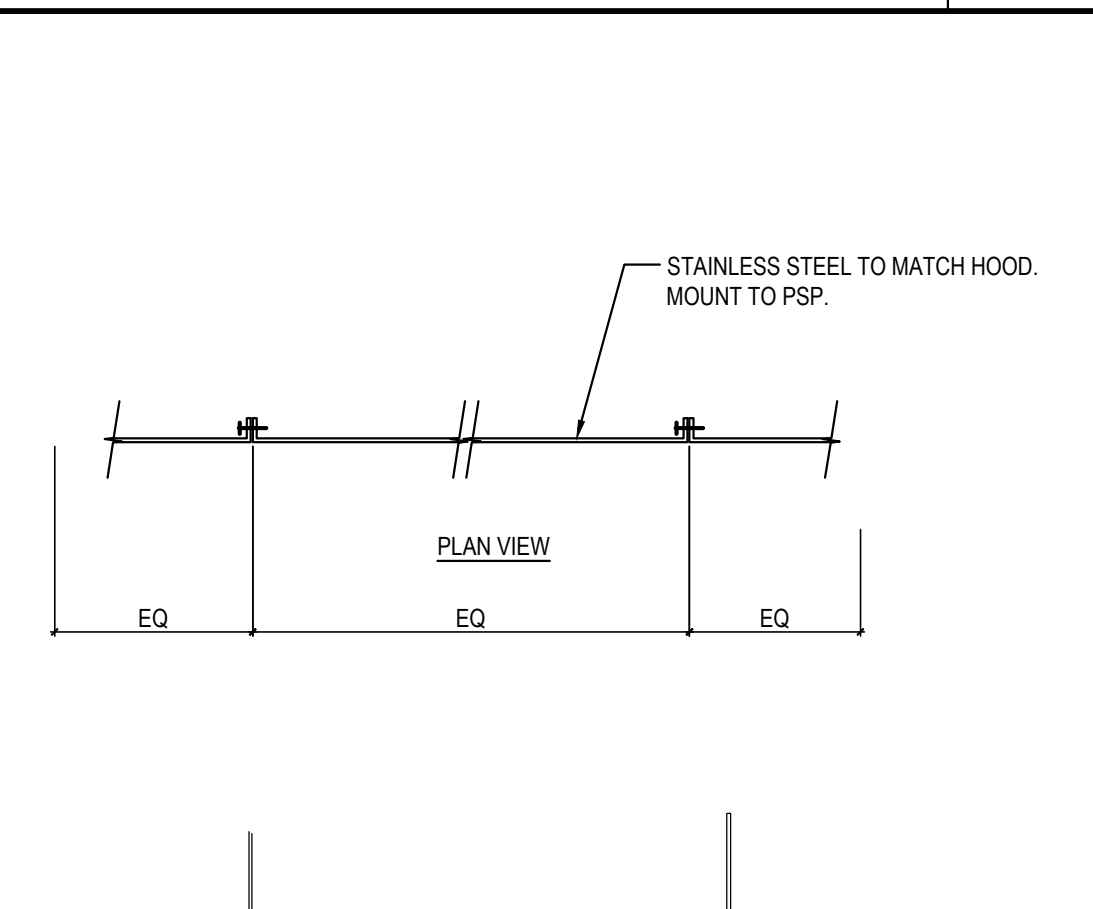


S.S. DETAIL @ COOLER / FREEZER

8

Scale= 1/2" = 1'-0"

A-404

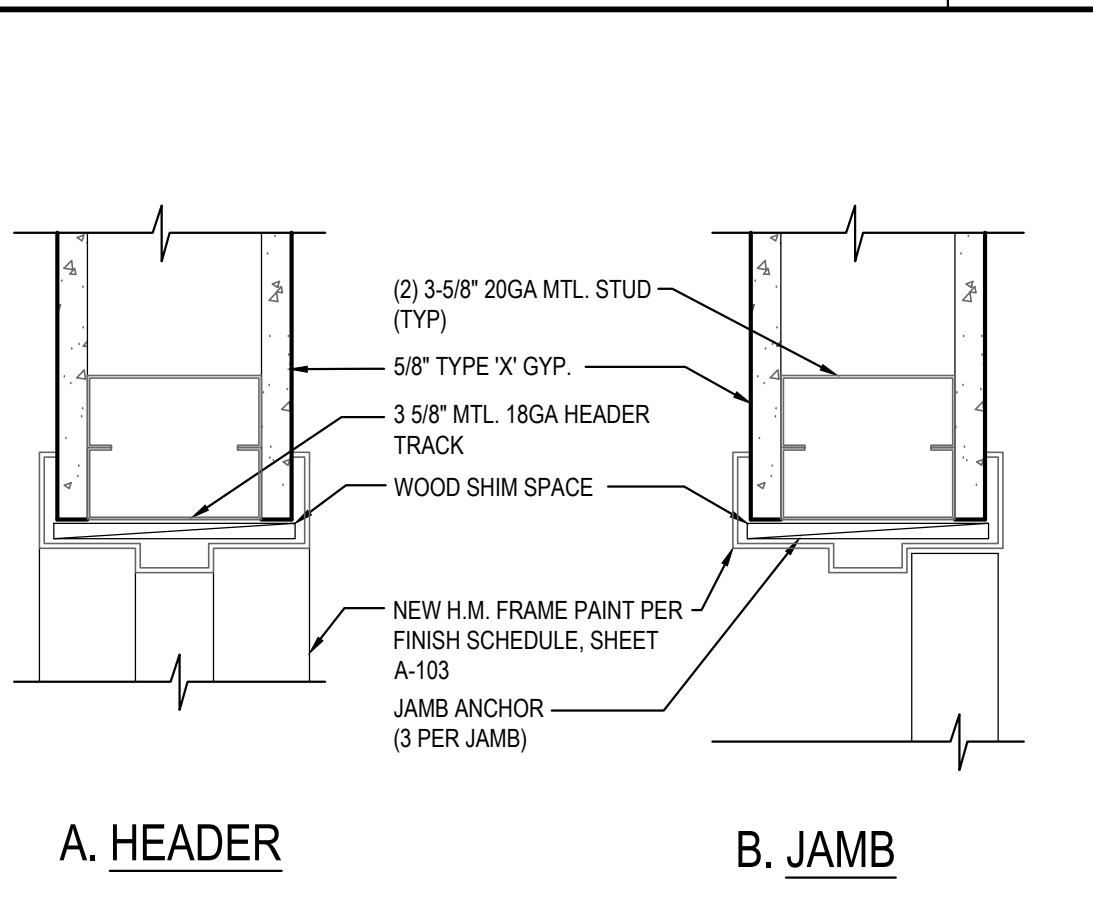


S.S. DETAIL @ EXHAUST HOOD

6

Scale= 1/2" = 1'-0"

A-404

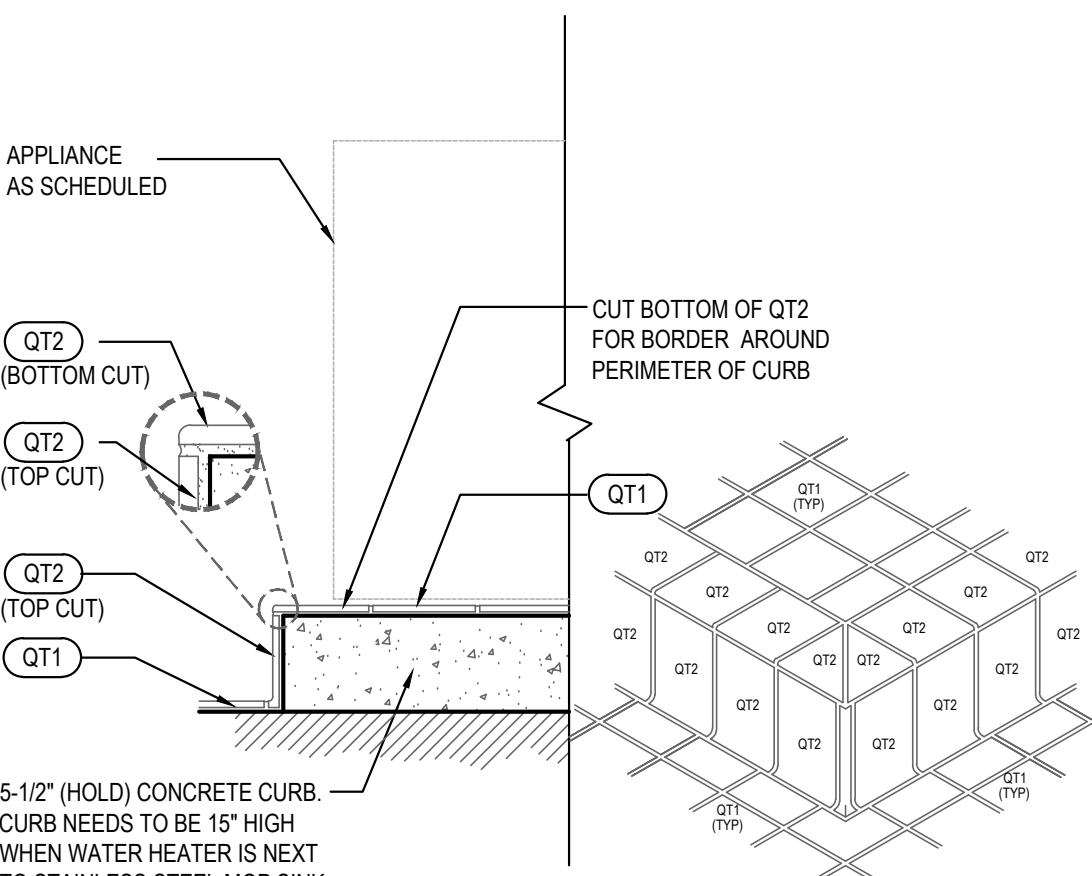


INTERIOR DOOR HEADER/JAMB

5

Scale= 3" = 1'-0"

A-404



5 1/2" CURB DETAIL

4

Scale= 1 1/2" = 1'-0"

A-404



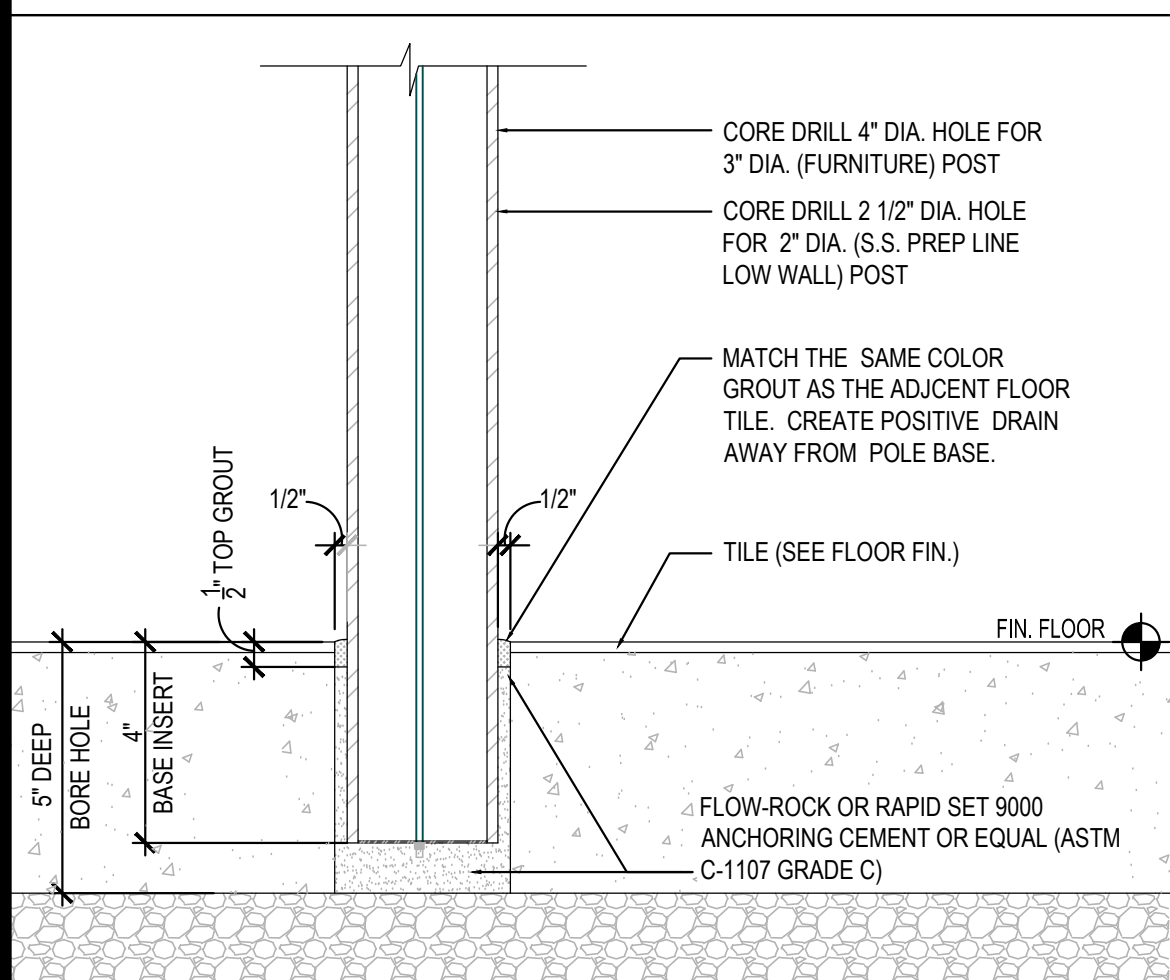
NOT USED

3

Scale= 1 1/2" = 1'-0"

A-404

NOTE:
G.C. TO REFER CORE DRILL LOCATION ON SHEET A-109

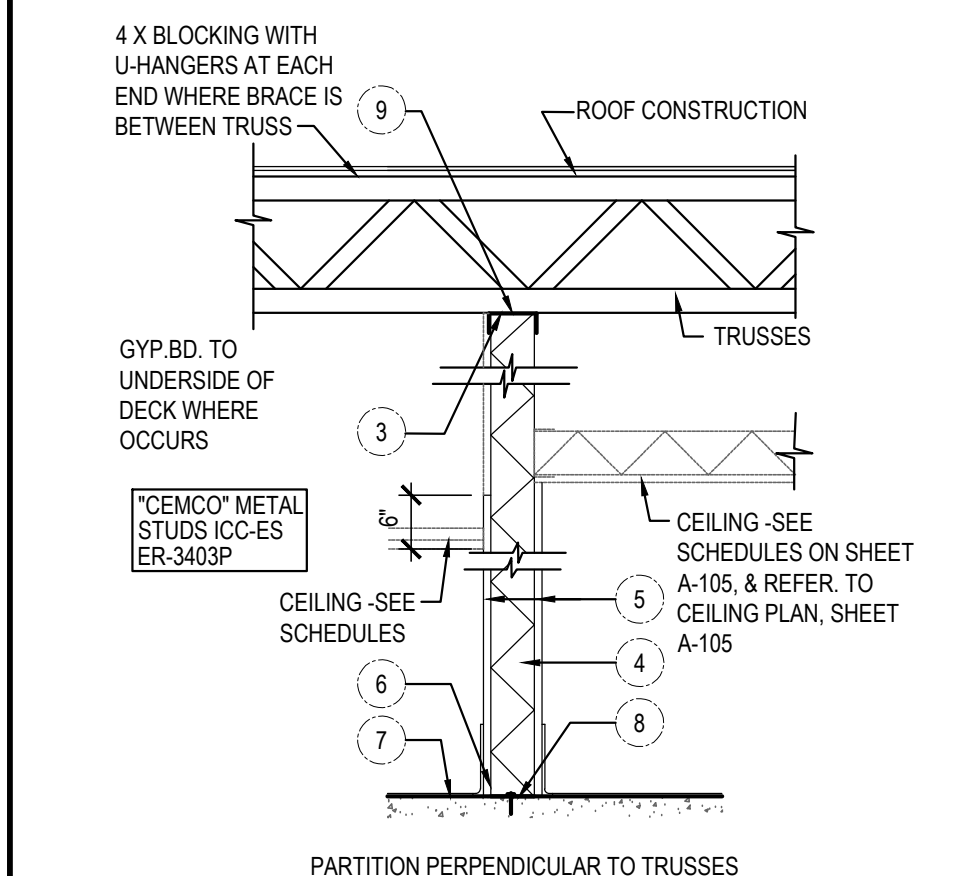


STANDARD CORE DRILL TABLE

17

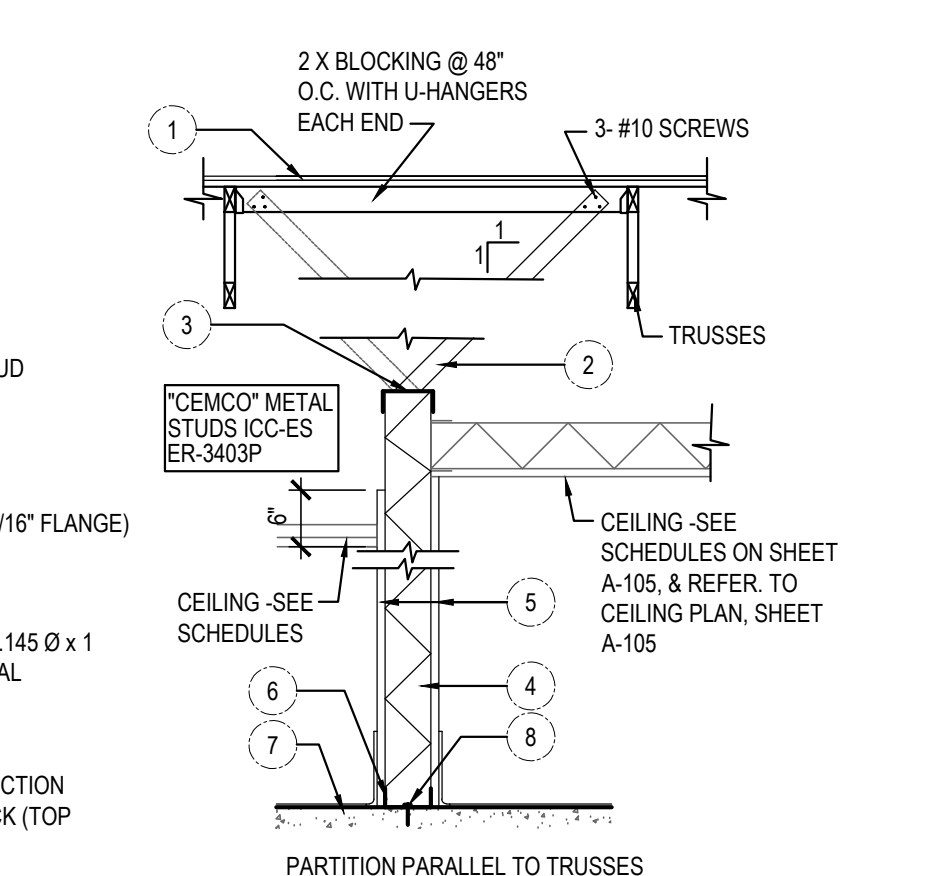
Scale= 1 1/2" = 1'-0"

A-404



HEIGHT	METAL STUD SIZE & SPACING
UP TO 12'-0"	1 1/2" x 3 1/2" x 20Ga @ 16" O.C.
BLOCKING LENGTH	SEE
6'-0" OR UNDER	3 1/2" x 20Ga
6'-1" TO 8'-0"	4" x 20Ga

- STRUCTURAL MEMBER ABOVE
- BRACING @ 4'-0" O.C. STAGGERED W/ 3/10 EA. END
- 20 Ga. CONT. TRACK W/ 8# SCREW/STUD
- METAL STUDS (SEE SCHEDULE)
- SEE ARCHITECTURAL FOR FINISH
- CONT. 20 Ga. UNPUNCHED TRACK (1 1/16" FLANGE)
- CONCRETE SLAB
- HILTI POWDER ACTUATED FASTENER .145 Ø x 1 1/2" PENETRATION @ 32" O.C. OR EQUAL
- 18 Ga. UNPUNCHED 3" DEEP LEG TRACK W/ 3 #10 SCREWS
- #8 SCREW PER STUD TYPICAL CONNECTION EA. FLANGE OF STUD TO STEEL TRACK (TOP & BOTT. TRACK)

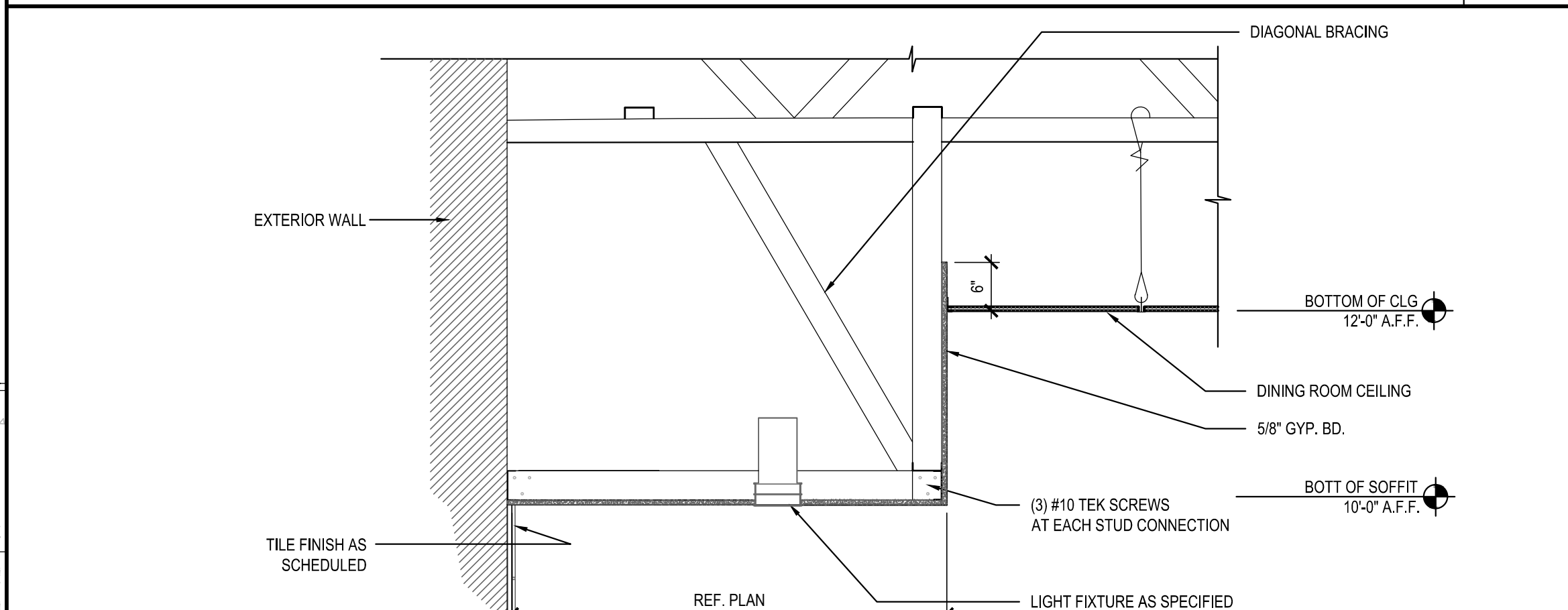


PARTITION DETAILS

10

Scale= 3/4" = 1'-0"

A-404

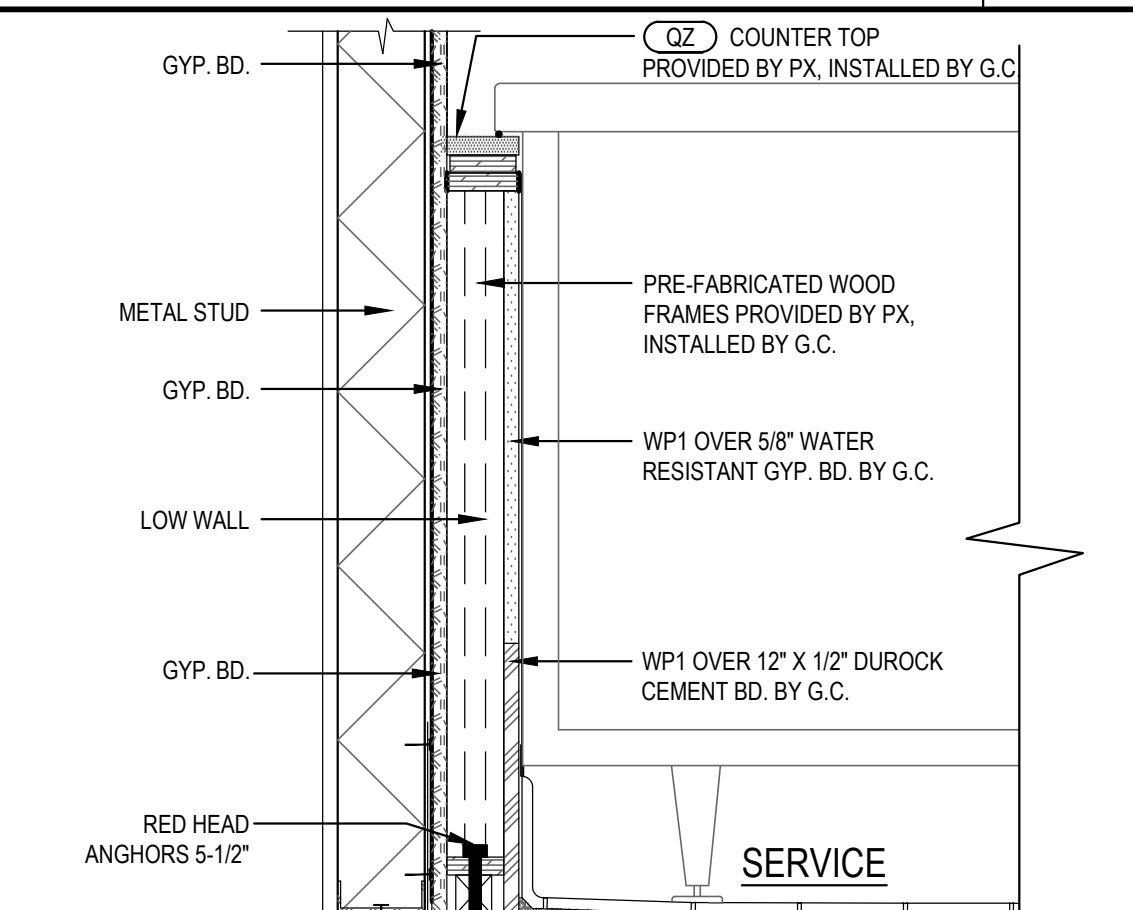


SOFFIT @ BEVERAGE COUNTER

9

Scale= 3/4" = 1'-0"

A-404



SERVICE COUNTER END DETAIL

1

Scale= 1 1/2" = 1'-0"

A-404



PANDA EXPRESS, INC.
1683 Walnut Grove Ave.
Rosemead, California
91770
Telephone: 626.799.9898
Facsimile: 626.372.8288

All ideas, designs, arrangement and plans indicated or represented by this drawing are the property of Panda Express Inc. and were created for use on this specific project. None of these ideas, designs, arrangements or plans may be used by or disclosed to any person, firm, or corporation without the written permission of Panda Express Inc.

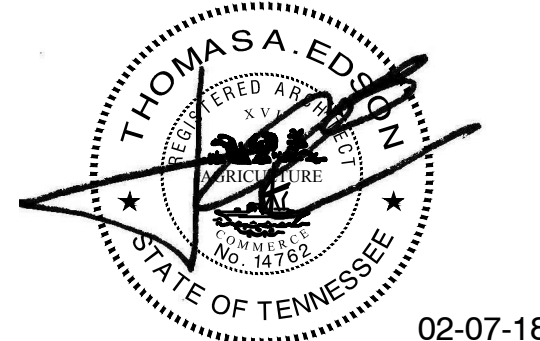
REVISIONS:

ISSUE DATE:

PERMIT	02-07-18

DRAWN BY:

PANDA PROJECT #: S8-18-D5082
ARCH PROJECT #: 261-171



PANDA EXPRESS
TRUE WARM & WELCOME 2200
INTERSTATE DR & S WALNUT AVE.
COOKEVILLE, TN

A-404

ARCHITECTURAL
DETAILS

TRUE WARM & WELCOME 2200

ISSUE FOR PERMIT 02-07-18

ISSUE FOR PERMIT 02-07-18