

**TRACT NO. 3565
NORTHWOOD PARK
UNIT NO. 6**

CONSISTING OF TWO SHEETS
BEING A PORTION OF THE MILITAS RANCHO
AND LYING WITHIN THE CITY OF
SAN JOSE, CALIFORNIA

SCALE 1" = 100'
AUGUST, 1963

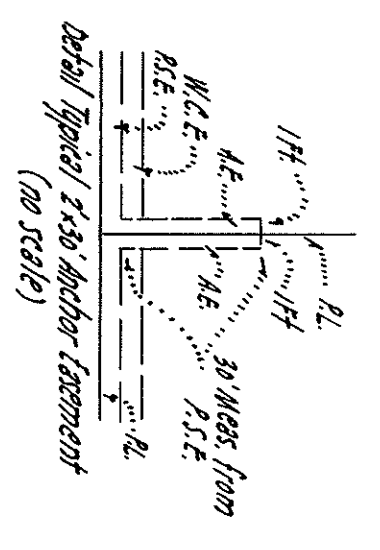
BASIS OF BEARINGS - NOTES & LEGEND

The bearing N 18° 32' 23" E along the northern line of lots 3, 4, 5, 6 & 7 as shown on the map entitled 'Map of Tract of Incorporated De La Rosa de la Santa Clara County Records, was taken as the basis of bearings shown hereon.

The blue border indicates the boundary of land subdivided by this map. All distances and dimensions are given in feet and decimals thereof. The 1/4" E. & W. line is the line of the lot lines noted otherwise.

- indicates 1/2" iron pipe found or as noted otherwise.
- indicates 1/2" iron pipe set.
- indicates City Standard Monument found.
- indicates City Standard Monument set.
- indicates angle point.

P.E. - Public Service Easement
N.C.E. - Nite Clearance Easement
A.E. - Anchor Easement
B.S.L. - Building Setback Line



Recorded September 20th, 1963
File No. 2485146
Book 167 Map Page 6 & 7
MacKay & Sompa
CIVIL ENGINEERS
1003 W. EL CAMINO REAL
SUNNYVALE, CALIFORNIA

SHEET 2 OF 2 SHEETS