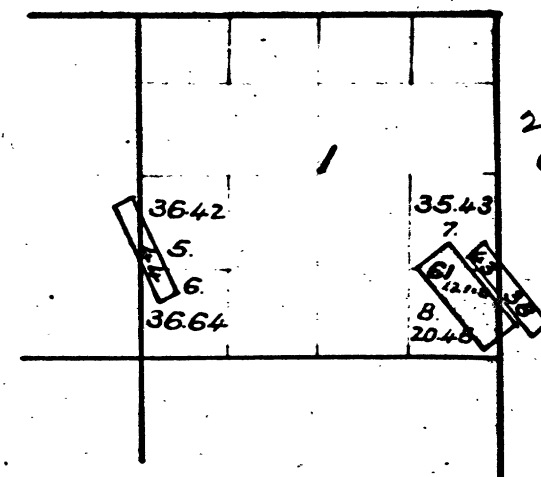


Township N°6 North, Range N°13 East, Mount Diablo Meridian, California.

48  
712

T6N. R.13E. M.D.M.

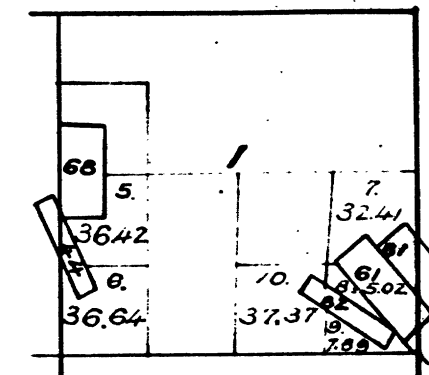


2272-  
61 Lockwood Gold Quartz Mine. V98-22

The above diagram showing amendments to Section 1, Township N°6 North, Range N°13 East, Mount Diablo Meridian, is correctly copied from the original map as amended and on file in this Office.  
U.S. Surveyor General's Office.  
San Francisco, California.  
November 20<sup>th</sup> 1884.

W. A. Brown  
U.S. Surv. Gen'l., Cal.

T.6 N. R.13 E. M.D.M.



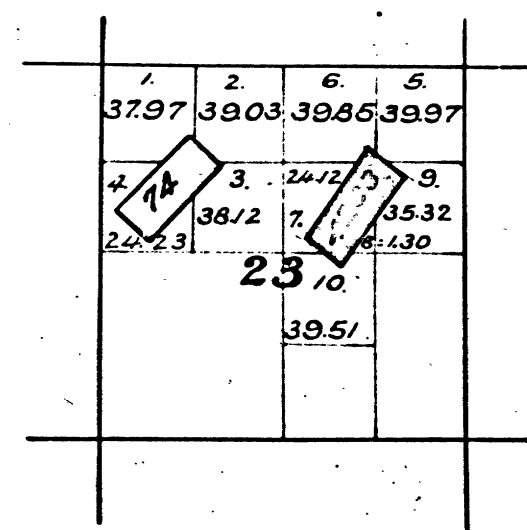
81 East Lockwood Quartz Mine. 3179- V 108-15  
82 West - 3180-

Lot 43 has been cancelled.

The above diagram of Section 1, Township 6 North, Range 13 East, Mount Diablo Meridian, is correctly copied from the original map as amended and on file in this.  
U.S. Surveyor General's Office.  
San Francisco, California.  
April 25<sup>th</sup> 1893.

Wm. H. Pratt  
U.S. Surv. Gen'l. Cal.

Township N°6 North, Range N°13 East, Mount Diablo Meridian, California.



2950 74 Bald Eagle Q. Mine V 101-13  
4203 Eberhardt Q. Mine

The above diagram of Section 23, Township N°6 North, Range N°13 East, Mount Diablo Meridian, California, is correctly constructed from official plats on file in this Office.  
U.S. Surveyor General's Office,  
San Francisco, California.  
August 2, 1904.

W. S. Graham  
U.S. Surveyor General for California

DEPARTMENT OF THE INTERIOR,  
GENERAL LAND OFFICE,  
Washington, D. C. Feb. 5, 1905.  
I hereby certify that this is a true copy  
of the plat of official survey of the lands  
to which it relates, on file in this office.

H. W. Pratt  
Recorder, General Land Office

41 527

CHAINS

CHAINS

0 20 40 60 80 100 120