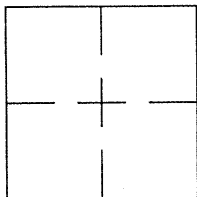


CORNER RECORD

Document Number CR 6741

City of OAKLAND County of ALAMEDA, California

Brief Legal Description WELL MONUMENT LOCATED WITHIN 17TH ST AND JACKSON ST.



CORNER RECORD

Government Corner ☐ Control ☒  
Meander ☐ Property ☐  
Rancho ☐ Other ☐  
Date of Survey 09/23/2014

COORDINATES  
(Optional)

N. \_\_\_\_\_  
E. \_\_\_\_\_  
Zone \_\_\_\_\_ Datum \_\_\_\_\_  
Elev. \_\_\_\_\_

Corner — Left as found ☒ Found and tagged ☐ Established ☐ Reestablished ☐ Rebuilt ☐

Identification and type of corner found: Evidence used to identify or procedure used to establish or reestablish the corner:  
FOUND IRON PIN IN WELL MONUMENT IN INTERSECTION OF 17TH ST AND JACKSON ST.

AS SHOWN ON CITY OF OAKLAND MONUMENT MAP, PAGE 203

CITY MONUMENT DESIGNATION NUMBER AT SUBJECT LOCATION 15NW30.

THIS POINT WAS REFERENCED PRIOR TO A CONSTRUCTION PROJECT IN THE VICINITY.

A description of the physical condition of the monument as found and as set or reset: \_\_\_\_\_  
FOUND AND SET POINTS AS SHOWN ON PAGE 2.

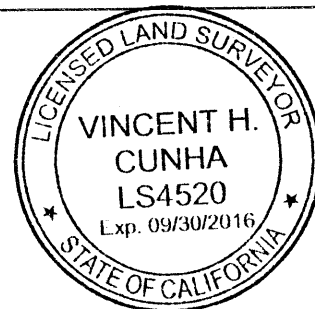
THESE TIES ARE FOR THE PURPOSE OF PERPETUATING THE FOUND MONUMENTATION.

NO CLAIM IS MADE AS TO THE RELATIONSHIP OF THE POINTS OR LINES SHOWN HEREON  
TO TRUE BOUNDARY LOCATIONS.

SURVEYOR'S STATEMENT

This Corner Record was prepared by me or under my direction in conformance with  
the Land Surveyors' Act on SEPTEMBER 26, 2014.

Signed Vincent H. Cunha L.S. Number LS 4520  
VINCENT H. CUNHA



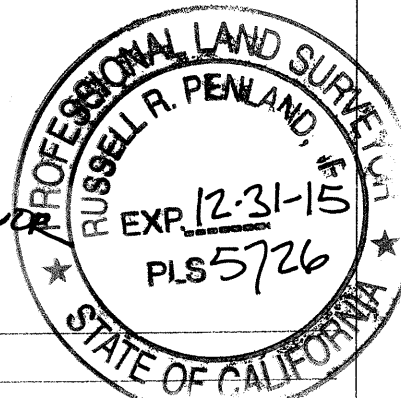
COUNTY SURVEYOR'S STATEMENT

This Corner Record was received 9-29-2014 and examined

and filed 11-13-2014

Signed Deidre Title County Surveyor

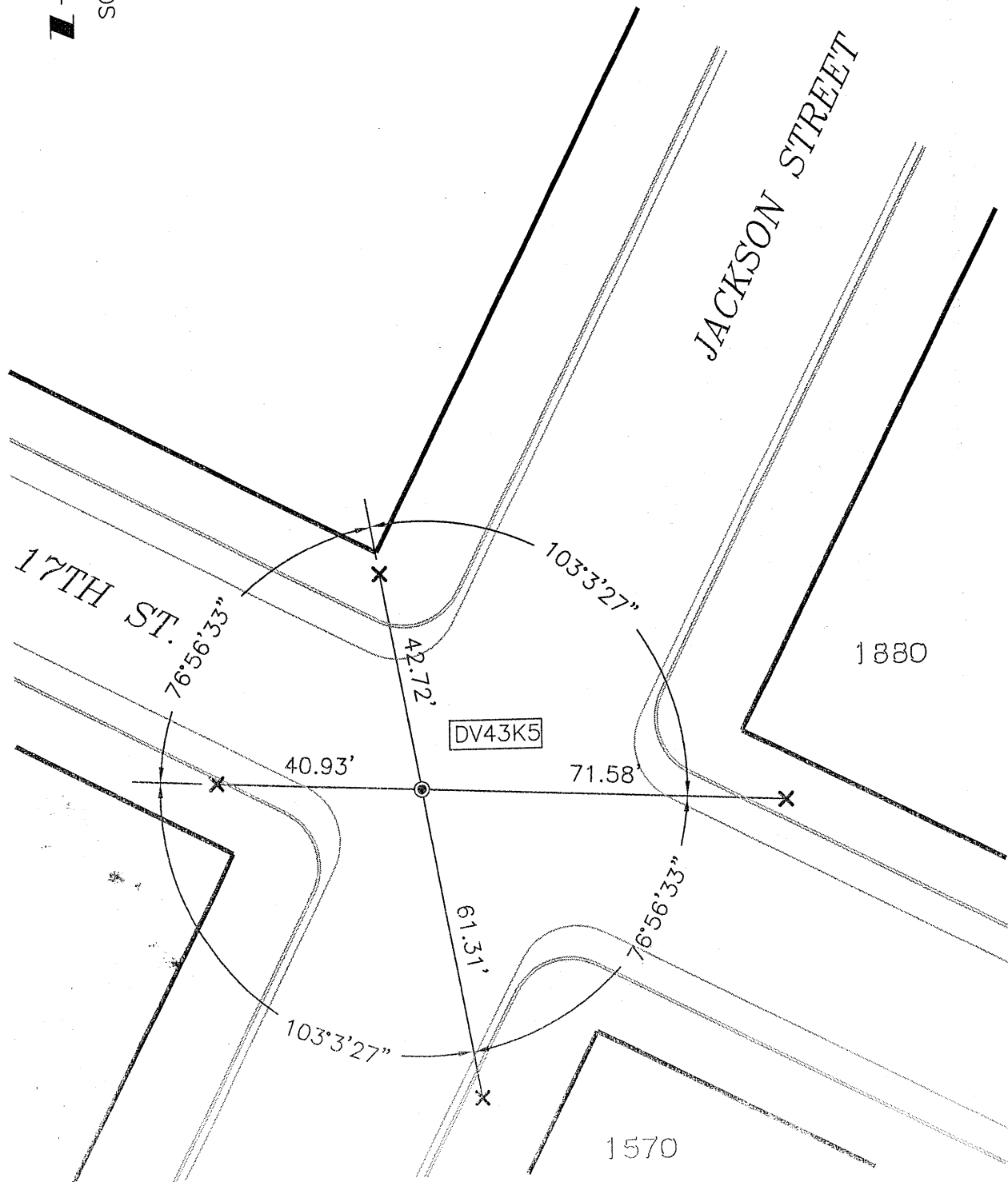
County Surveyor's Comment \_\_\_\_\_



SCALE: 1"=30'

# LEGEND

- FOUND IRON PIN IN MONUMENT WELL (15NW30)
- ✕ SET CUT CROSS IN CONCRETE
- AA##A# ALAMEDA COUNTY MONUMENT ID



214073-17TH-CR14