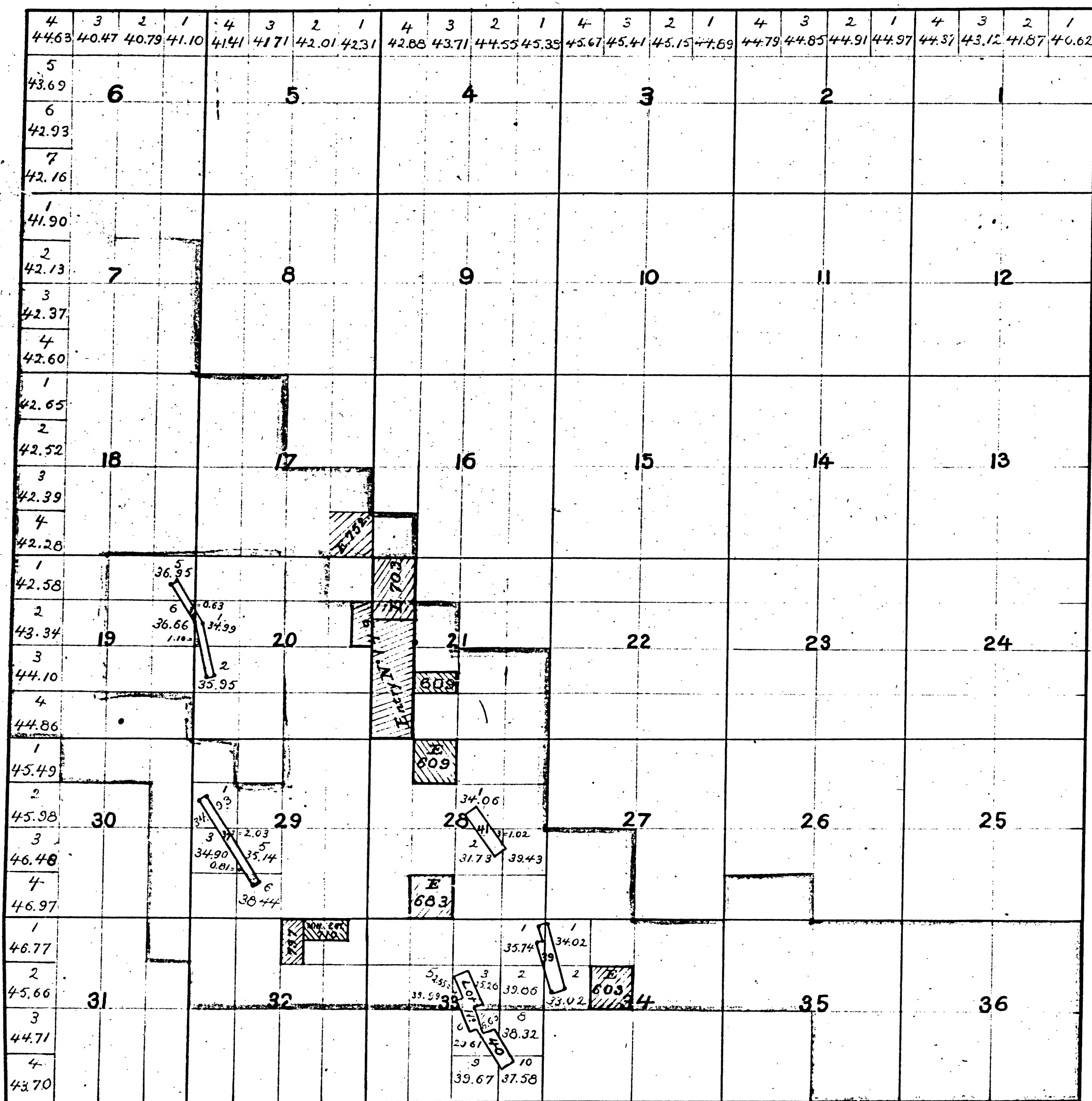


Township N°4 North, Range N°12 East, Mount Diablo Meridian

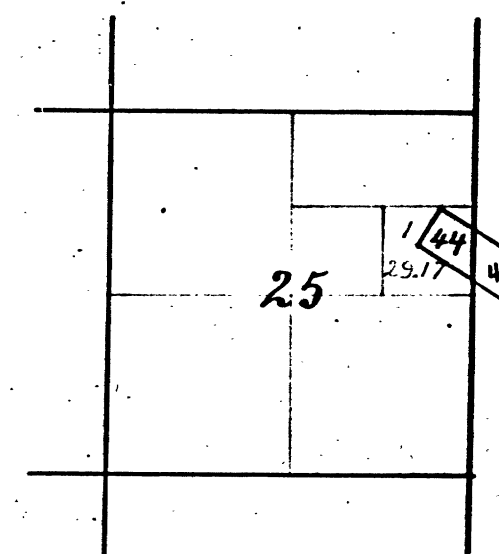
#Mineral Land returned, Jan. 18, '71.



- 46-E. 58 37. Pioneer Chief Gold and Silver Quartz Claim. Pat. July 29, '72. N° 407,167-25
- 75- 90 38. Everlasting Quartz Mine. May 6, '73 - 555,155-19
- 1423-789 39. Rathgeb Quartz Mine. V90-25 Nov. 17, '81 - 5086, V90-25
- 653-508 40. Union Gold bearing Q. Mine. V41-17420 Pat. Apl. 20, '78 N° 2624
- 1071-788 41. Ambrosia Quartz Mine. V100-20 May 31, '82 N° 5904

- 149. L.S. Pat. Nov. 1, '73. N° 661.
- 603 ..
- 609 .. Pat. June 30, '80. N° 4050.
- 683 .. Aug 31, '80. 4192.
- 703 .. Mch. 30, '80. 3866.
- 710 .. Oct. 28, '80. 4920.
- 752 .. Nov. 30, '81. 5143.
- 797 .. Canceled per letter Jan. 16, '83.

T. 4 N. R. 12 E. M. D. M.



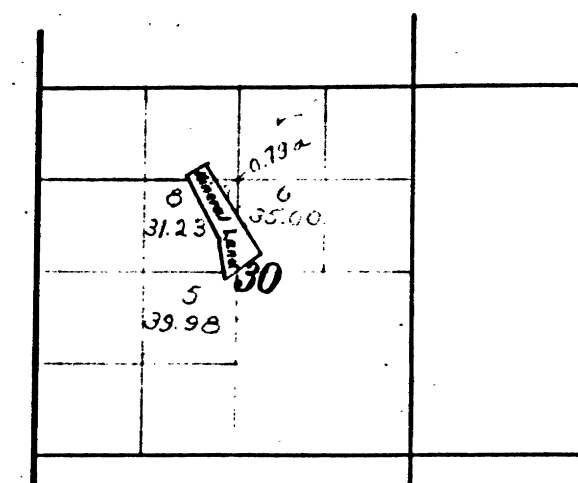
Gertrude Quartz Mine.

The above diagram showing amendments to Section 25, Township N°4 North Range N°12 East, Mount Diablo Meridian, is correctly copied from the original map as amended and on file in this Office.

U.S. Surveyor General's Office.
San Francisco California.
April 5th 1886.

R. P. Hammond
U.S. Sur. Gen'l. Cal.

T. 4 N. R. 12 E. M. D. M.



DEPARTMENT OF THE INTERIOR,
GENERAL LAND OFFICE,
Washington, D. C. *11-1-1887*
I hereby certify that this is a true copy of the plats of official survey of the lands to which it relates, on file in this office.

H. B. [Signature]
Recorder, General Land Office.

The above diagram of the segregation of mineral from agricultural lands in Section 30 Township N°4 North, Range N°12 East, Mount Diablo Meridian, is correctly copied from the original plat as amended and on file in this Office.

Surveyor General's Office.
San Francisco California.
July 6th 1887.

R. P. Hammond
Sur. Gen'l. Cal.

The above Diagram of Township N°4 North, Range N°12 East of Mount Diablo Meridian correctly Shows the amendments made in accordance with the Plats of Mining Surveys approved to date.

U.S. Surveyor General's Office.
San Francisco California.
August 21st 1873.

L. R. Hardenbergh
U.S. Sur. Gen'l. Cal.