



PANDA EXPRESS, INC.  
1683 Walnut Grove Ave.  
Rosemead, California  
91770  
Telephone: 626.799.9898  
Facsimile: 626.372.8288

All ideas, designs, arrangement and plans indicated or represented by this drawing are the property of Panda Express Inc. and were created for use on this specific project. None of these ideas, designs, arrangements or plans may be used by or disclosed to any person, firm, or corporation without the written permission of Panda Express Inc.

REVISIONS:	
Δ	SOLUTION F.2 09.30.21

ISSUE DATE:	
	ISSUE FOR PERMIT 01-29-21
	ISSUE FOR BID 04-30-21
	ISSUE FOR BID 2 11-02-21
	ISSUE FOR BID (DT) 02-04-22

DRAWN BY: AE

PANDA PROJECT #: D8164

PANDA STORE #: -

ARCH PROJECT #: 261-321



MPW ENGINEERING, LLC  
110 W. 7TH STREET • SUITE 600 • TULSA, OK 74109  
(918) 582-4008 • (918) 582-4087 FAX



PANDA EXPRESS  
TRUE WARM & WELCOME  
JEFFERSON AVE. & MORRIS DR.  
NEWPORT NEWS, VA 23605

E-104

ROOF POWER PLAN

TRUE WARM & WELCOME 2300 R6

- ALL ROOF MOUNTED EQUIPMENT SHALL BE IN NEMA-3R ENCLOSURES.
- ALL CONDUIT RUNS SHOWN ON THE ROOF SHALL BE RUN BELOW IN THE CEILING SPACE WHERE AMBIENT TEMPERATURE WILL BE BELOW 30° C. FINAL CONNECTIONS TO THE ROOF EQUIPMENT IS LIMITED TO 5'-0" OF DIRECT SOLAR EXPOSURE.
- VERIFY ALL FUSE SIZES AND TYPES WITH THE MECHANICAL EQUIPMENT MANUFACTURER PRIOR TO INSTALLATION.
- REVIEW THE MECHANICAL PLANS FOR HVAC CONTROL REQUIREMENTS AND SCOPE OF WORK PRIOR TO BIDDING AND INCLUDE ALL COSTS IN BID.
- VERIFY CONNECTION POINTS OF ALL HVAC EQUIPMENT PRIOR TO INSTALLATION. PROVIDE CONTROL VOLTAGE CONNECTION TO DUCT MTD. SMOKE DETECTOR AS REQUIRED BY MECHANICAL DRAWING M-100 AND INTERLOCK WITH FIREALARM.
- SEE MECHANICAL DRAWINGS FOR EXACT LOCATIONS OF MECHANICAL EQUIPMENT AND THERMOSTATS. PROVIDE RACEWAY SYSTEM FOR ALL CONTROL WIRING AS REQUIRED BY MECHANICAL DRAWING M-100.
- E.C. COORDINATE ELECTRICAL, MECHANICAL, FIRE ALARM (IF REQUIRED) FOR INTERLOCK SEQUENCE FOR FIRE SUPPRESSION.
- RESTROOM EXHAUST FAN TO BE POWERED FROM BACK OF HOUSE LIGHTING CIRCUIT. SEE DETAIL 5/E400 FOR ADDITIONAL INFORMATION.

## ROOF PLAN GENERAL NOTES 2

NOT TO SCALE E-104

- ROUTE HOMERUN THROUGH BACK OF HOUSE LIGHTING CIRCUIT. REFER TO LIGHTING CONTACTOR SCHEDULE. 4/E-101. FAN TO BE CONTROLLED BY SWITCH FOR BACK OF HOUSE LIGHTING.
- DUCT SMOKE DETECTOR. FURNISHED BY MECHANICAL/FACTORY. WIRED BY ELECTRICAL / FIRE ALARM CONTRACTOR. FURNISH AND INSTALL ALL RACEWAY, WIRING, AND ADDITIONAL ACCESSORIES REQUIRED FOR CODE COMPLIANCE AND UNIT SHUTDOWN.
- CIRCUIT FEEDS FROM PANELBOARD - THROUGH HOOD CONTROL PANEL - UP TO ROOF. REFER TO DETAIL, SHEET 3/E-401 & KITCHEN HOOD SUBMITTAL DATA.
- REFER TO CONDENSING UNIT WIRING DIAGRAM, 7/E-400.
- STRUT RACK SUPPORT FOR EQUIPMENT DISCONNECT SWITCHES. REFER TO DETAIL, SHEET 2/E-401.
- NOT USED.
- DO NOT INSTALL UNTIL BACK DRAFT DAMPER INSTALLATION IS COMPLETE. UTILIZE FACTORY KNOCKOUTS FOR ELECTRICAL RUN FOR THIS FAN. REFER TO SHEET M-402.
- MOUNT PHOTOCELL AS DETAILED ON EQUIPMENT DISCONNECT SWITCH SUPPORT DETAIL 2/E401 ON CONDENSER RACK.
- STUB ELECTRICAL FEED FOR EF-1 & EF-2, THROUGH ROOF ON HINGE SIDE OF EXHAUST FANS, IN LOCATION AS SHOWN ON POWER ROOF PLAN. REFER TO DETAIL 3/M-501 FOR ADDITIONAL DETAILS.
- ROUTE POWER FEEDS VIA FACTORY PROVIDED THRU-BASE CONNECTION AREA. COORDINATE WITH MECHANICAL.
- UNIT INCLUDES FACTORY MOLDED CASE DISCONNECT SWITCH (NO OCP). VERIFY WITH MECHANICAL SUBMITTAL DATA. PROVIDE DISCONNECT IF / AS REQUIRED.

## # ROOF PLAN KEYED NOTES 3

NOT TO SCALE E-104

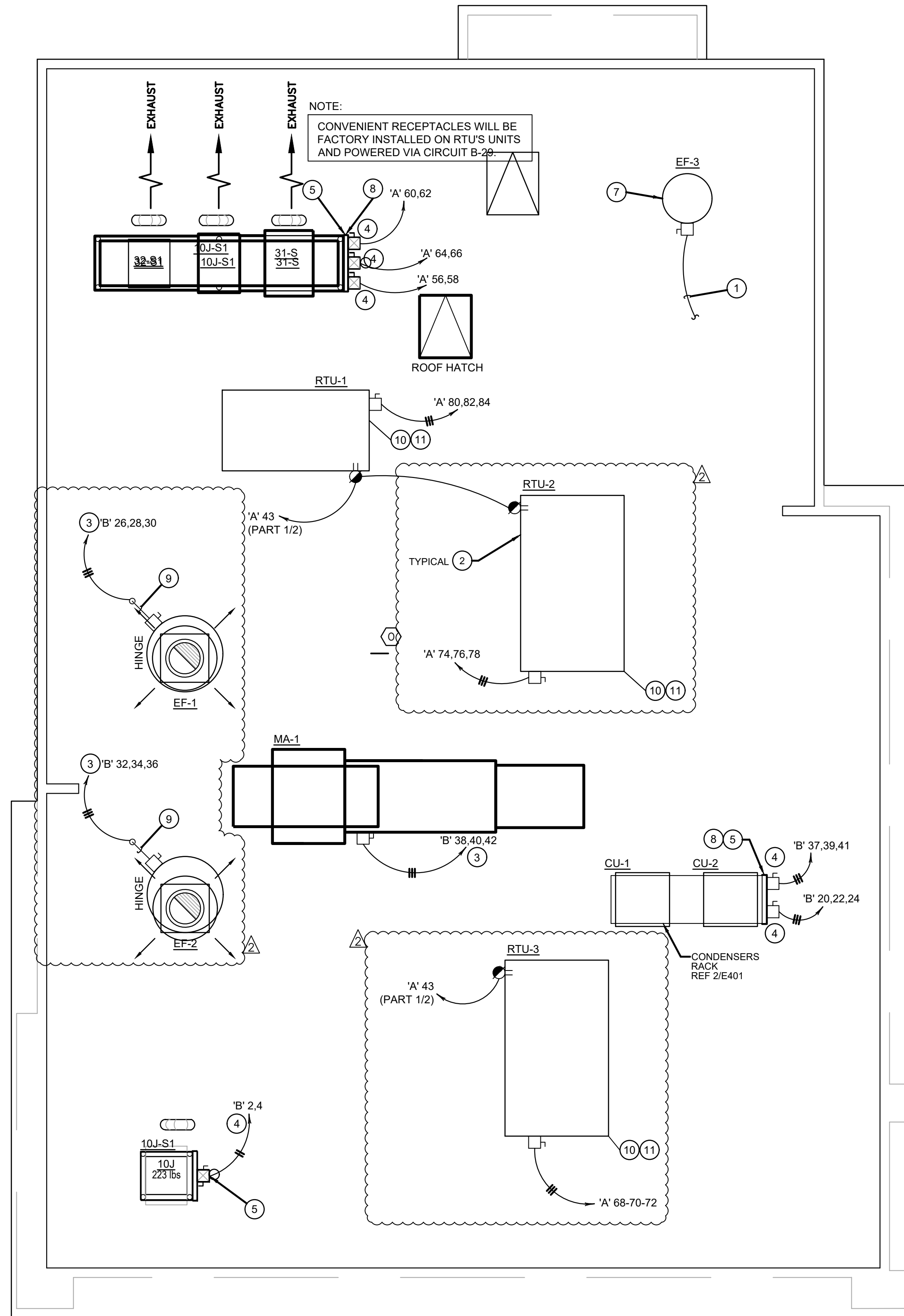
### ROOFTOP EQUIPMENT SCHEDULE

TAG	DESCRIPTION	KW	H.P.	FLA	VOLT/Ø	WIRE, CONDUIT	CONN	MOUNT HEIGHT	DISC. SW. WITH RK1 FUSES PER MFR'S REQ'S. AND/OR REMARKS
RTU1	A/C UNIT (LENNOX)			33.0	208V.3Ø	3 #8, #10 GND., 1" C.	<input type="checkbox"/>	AT UNIT	60A. 3P. 3F. WP (1)(4)
RTU2	A/C UNIT (LENNOX)			46.0	208V.3Ø	3 #6, #10 GND., 1" C.	<input type="checkbox"/>	AT UNIT	60A. 3P. 3F. WP (1)(4)
RTU3	A/C UNIT (LENNOX)			46.0	208V.3Ø	3 #6, #10 GND., 1" C.	<input type="checkbox"/>	AT UNIT	60A. 3P. 3F. WP (1)(4)
CU-1	CONDENSING UNIT			21.4	208V.3Ø	3 #10, #10 GND., 1" C.	<input type="checkbox"/>	AT UNIT	30A. 3P. 3F. WP (1)
CU-2	CONDENSING UNIT			21.4	208V.3Ø	3 #10, #10 GND., 1" C.	<input type="checkbox"/>	AT UNIT	30A. 3P. 3F. WP (1)
MA-1	MAKE-UP AIR UNIT	5.0	15.0	208V.3Ø	3 #12, #12 GND., 3/4" C.	<input type="checkbox"/>	AT UNIT		(1)(4)
EF-1	EXHAUST FAN	2.0	5.9	208V.3Ø	3 #12, #12 GND., 3/4" C.	<input type="checkbox"/>	AT UNIT		(1)
EF-2	EXHAUST FAN	2.0	5.9	208V.3Ø	3 #12, #12 GND., 3/4" C.	<input type="checkbox"/>	AT UNIT		(1)
EF-3	EXHAUST FAN	1/4	4.8	120V.1Ø	2 #12, #12 GND., 3/4" C.	<input type="checkbox"/>	AT UNIT		30A. 2P. 1F. WP (1)(4)
31-S	W/ COOLER COND.			27.0	208V.1Ø	2 #10, #10 GND., 3/4" C.	<input checked="" type="checkbox"/>	AT UNIT	(2)(3)
32-S1	W/ FREEZER COND.			32.0	208V.1Ø	2 #8, #8 GND., 3/4" C.	<input checked="" type="checkbox"/>	AT UNIT	30A. 2P. 2F. WP (3)
10J-S1	ICE MACHINE COND.			11.7	208V.1Ø	2 #12, #12 GND., 3/4" C.	<input checked="" type="checkbox"/>	AT UNIT	(2)(3)

- (1) DISCONNECT SWITCH PROVIDED WITH UNIT.
- (2) COMBINATION 30A. 2P. 2F. WP DISCONNECT SWITCH WITH RK5 FUSES PER MANUFACTURER RECOMMENDATION.
- (3) COMBINE CIRCUITRY IN 1" CONDUIT FROM J-BOX ON EQUIPMENT DISCONNECT SWITCH SUPPORT. REFER TO DETAIL THIS SHEET, 1 / E-104.
- (4) ELECTRICAL FEEDS ARE TO BE ROUTED FROM PLENUM SPACE. UP THROUGH EQUIPMENT CURB, INTO BOTTOM OF EQUIPMENT, THROUGH FACTORY INSTALLED WATER TIGHT CONNECTIONS.

## HVAC EQUIPMENT SCHEDULE 4

NOT TO SCALE E-104



## ROOF POWER PLAN 1

1/4" = 1'-0" E-104

ISSUE FOR PERMIT 11-02-21