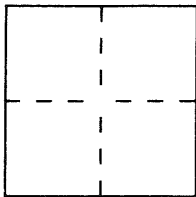


CORNER RECORDDocument Number CR 1173City of OaklandCounty of Alameda, CaliforniaBrief Legal Description Lots 181-A, 181-B, and 2964-C, "Thorndale" (18M68)**CORNER TYPE**

Government Corner ☐ Control ☐
 Meander ☐ Property ☒
 Rancho ☐ Other ☐
 Date of Survey December 21, 1998

COORDINATES
(Optional)

N. _____
 E. _____
 Zone _____ Datum _____
 Elev. _____

Corner — Left as found ☐ Found and tagged ☐ Established ☒ Reestablished ☐ Rebuilt ☐

Identification and type of corner found: Evidence used to identify or procedure used to establish or reestablish the corner:
Found City of Oakland standard "pin" monument per Map of "Thorndale"
(18M68)

A description of the physical condition of the monument as found and as set or reset: _____
Set 5/8" rebar with plastic cap, LS 5252
Found cut "T" in deteriorating concrete step

SURVEYOR'S STATEMENT

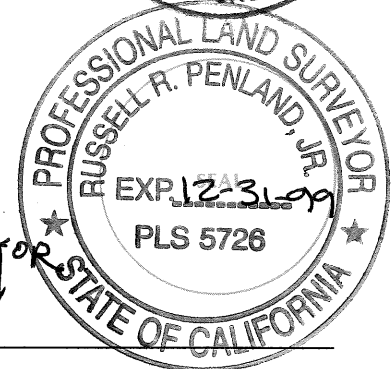
This Corner Record was prepared by me or under my direction in conformance with
 the Land Surveyors' Act on January 5 19 99.

Signed Jeffrey D. Black L.S. or R.S. Number 5252

**COUNTY SURVEYOR'S STATEMENT**

This Corner Record was received 1-11 19 99 and examined
 and filed B-3-1 19 99.

Signed Russell R. Penland, Jr. Title Deputy County Surveyor



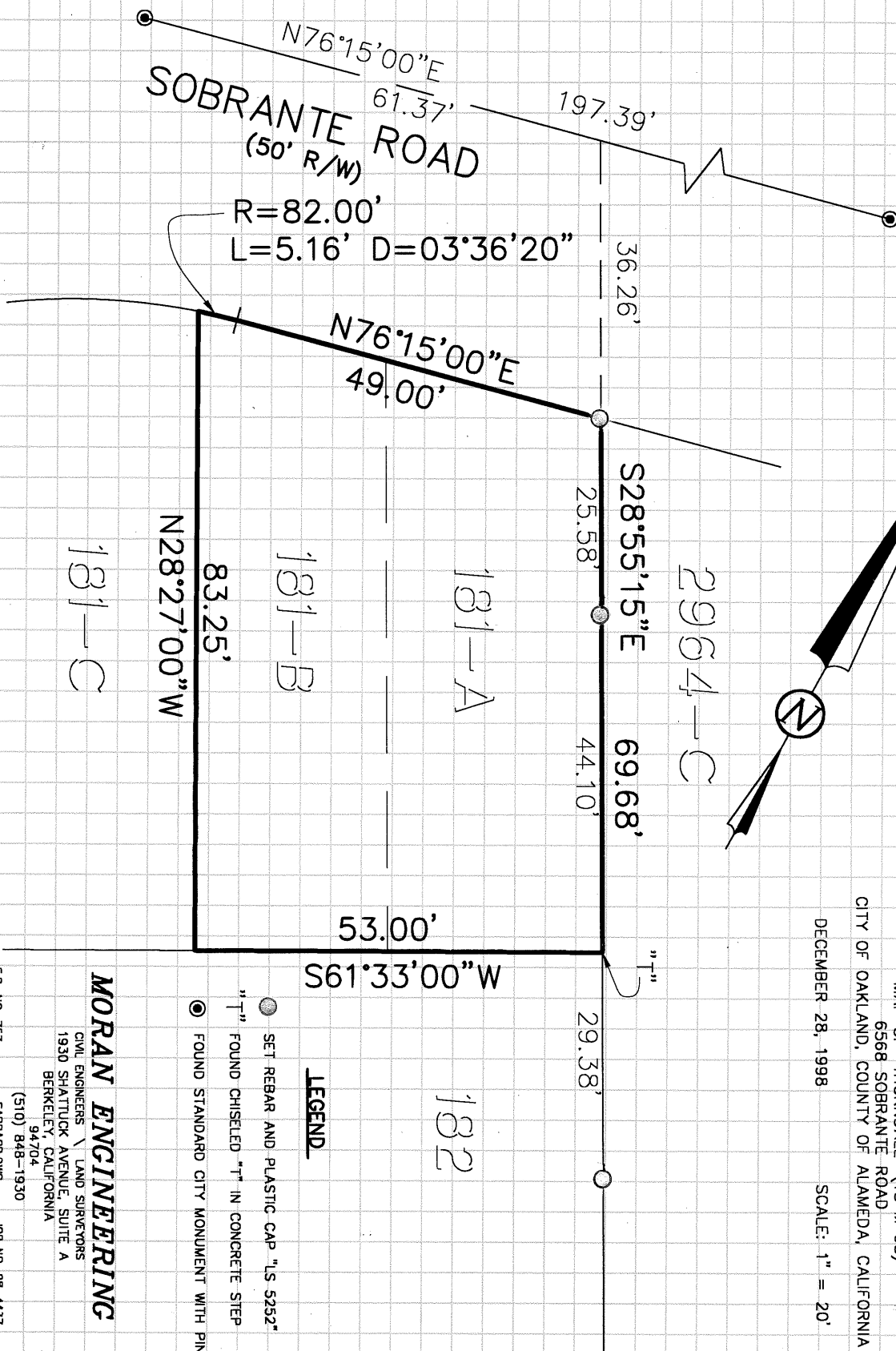
County Surveyor's Comment _____

CORNER RECORD

LOTS 181-A AND 181-B
 MAP OF "THORNDALE" (18 M 68)
 6568 SOBRANTE ROAD
 CITY OF OAKLAND, COUNTY OF ALAMEDA, CALIFORNIA

DECEMBER 28, 1998

SCALE: 1" = 20'



LEGEND

- SET REBAR AND PLASTIC CAP "LS 5252"
- "T" FOUND CHISELED "T" IN CONCRETE STEP
- FOUND STANDARD CITY MONUMENT WITH PIN

MORAN ENGINEERING

CIVIL ENGINEERS / LAND SURVEYORS
 1930 SHATTUCK AVENUE, SUITE A
 BERKELEY, CALIFORNIA 94704

(510) 848-1930

F.B. NO. 757

SABRACK.DWG

JOB NO. 98-4437