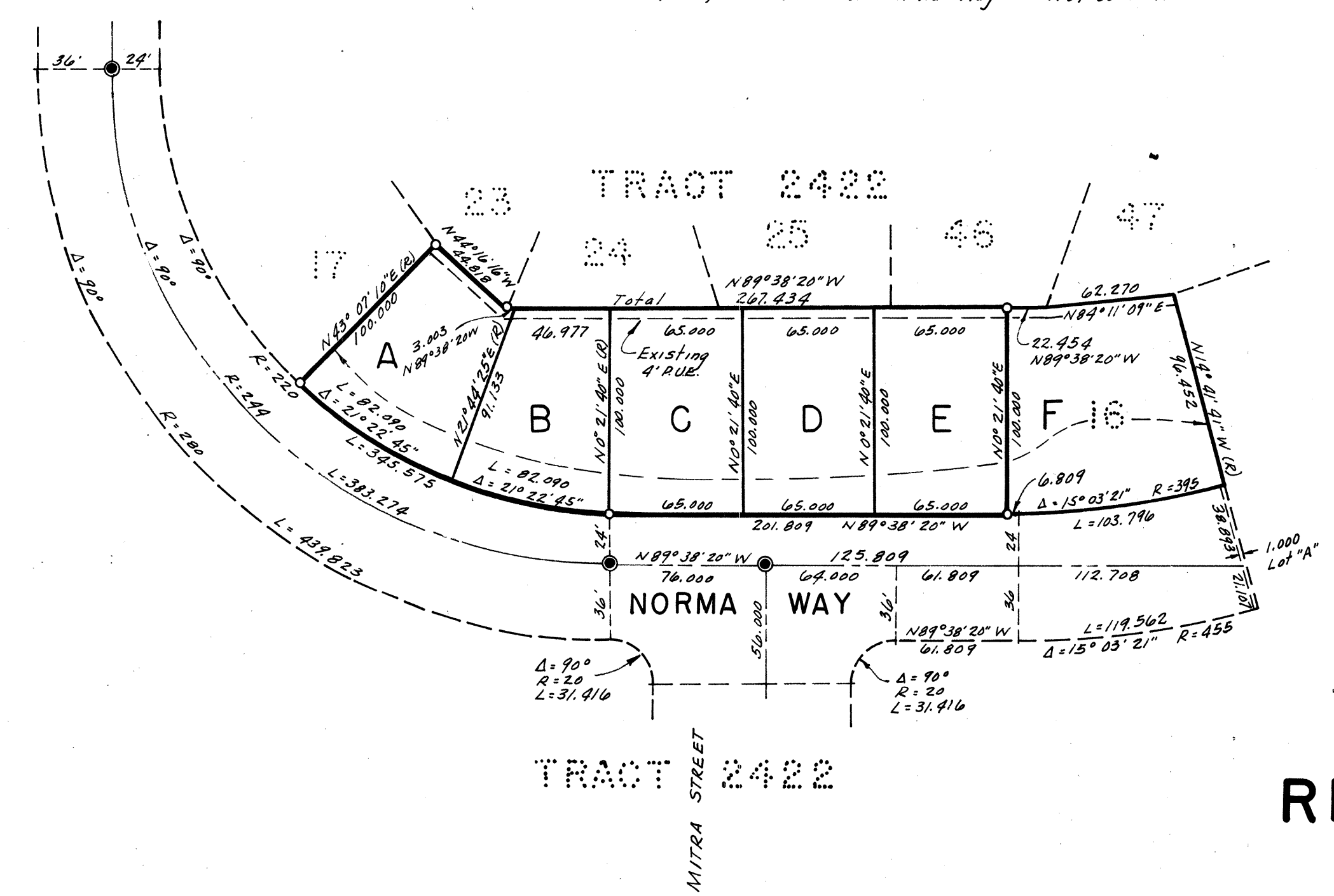


Scale: 1" = 60'

BASIS OF BEARING

Tract 2422, as shown for Norma Way as N89°38'20"W



LEGEND

- City monument found
- Iron pipe set

# RECORD OF SURVEY

OF

LOT 16, TRACT 2422  
LIVERMORE, ALAMEDA COUNTY, CALIFORNIA

BY

MASON & ASSOCIATES, INC.  
ENGINEERS - PLANNERS - ARCHITECTS  
LIVERMORE CALIFORNIA  
NOVEMBER 1963

SURVEYOR'S CERTIFICATE

This map correctly represents a survey made by me or under my direction in conformance with the requirements of the Land Surveyors' Act at the request of GFL Homes, Inc. in October, 1963. This record of survey is excluded from the Subdivision Map Act by Subparagraph b1 of section 11533.

Earl E. Mason RCE No. 11118

CO. SURVEYOR'S CERTIFICATE

This map has been examined for conformance with the requirements of the Land Surveyors' Act this 30 day of January 1964 at the request of James F. Virrette, County Surveyor, RCE No. 8087.

RECORDER'S CERTIFICATE

Filed for record this 3rd day of Feb 1964 at 9:00 A.M. in Book of Records of Surveys at page at the request of James F. Virrette.

Jack G. Blue  
County Recorder  
by Deputy J. Cameron