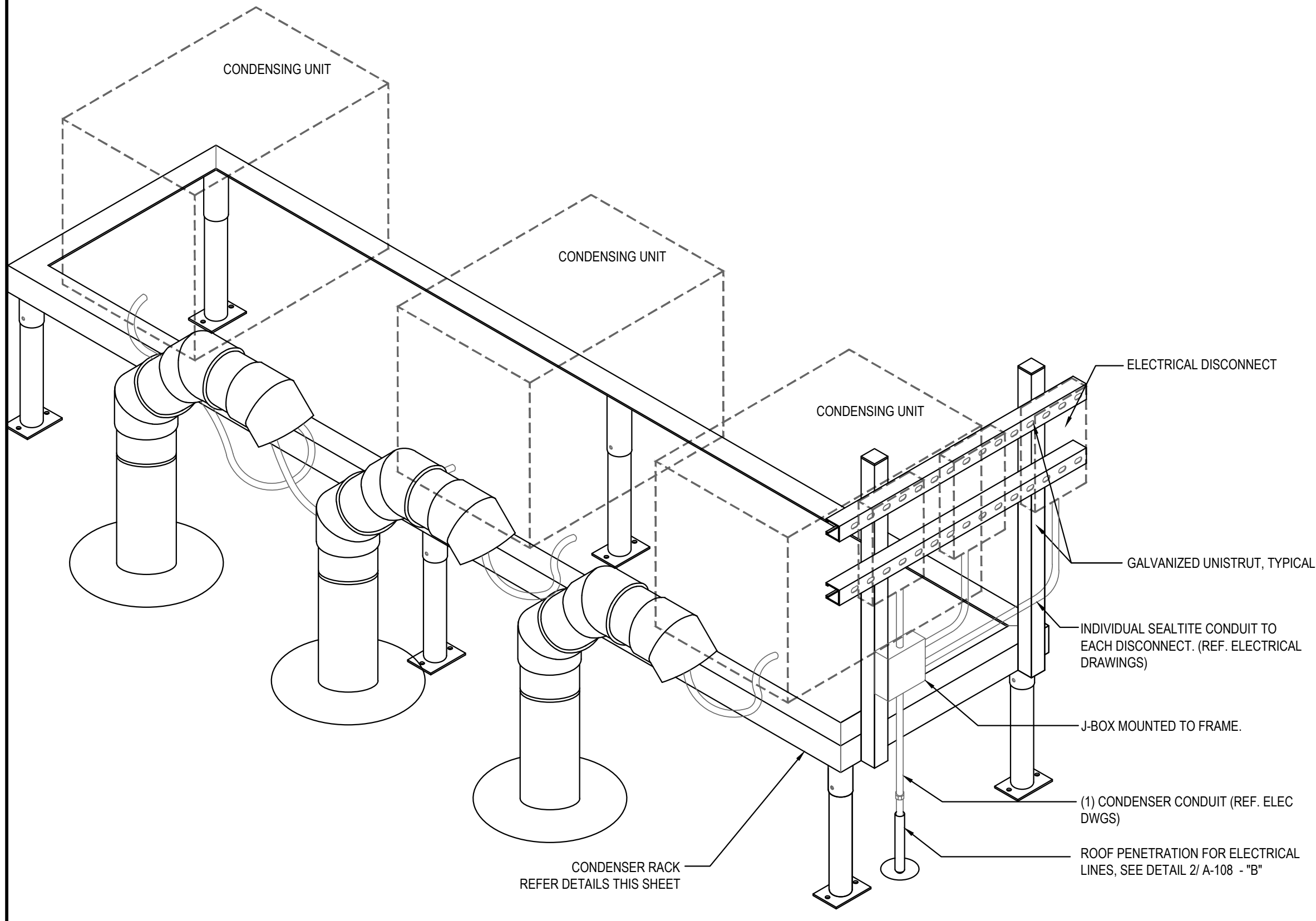


ROOF EXHAUST FAN

5

Scale= 1/4" = 1'-0"

A-108

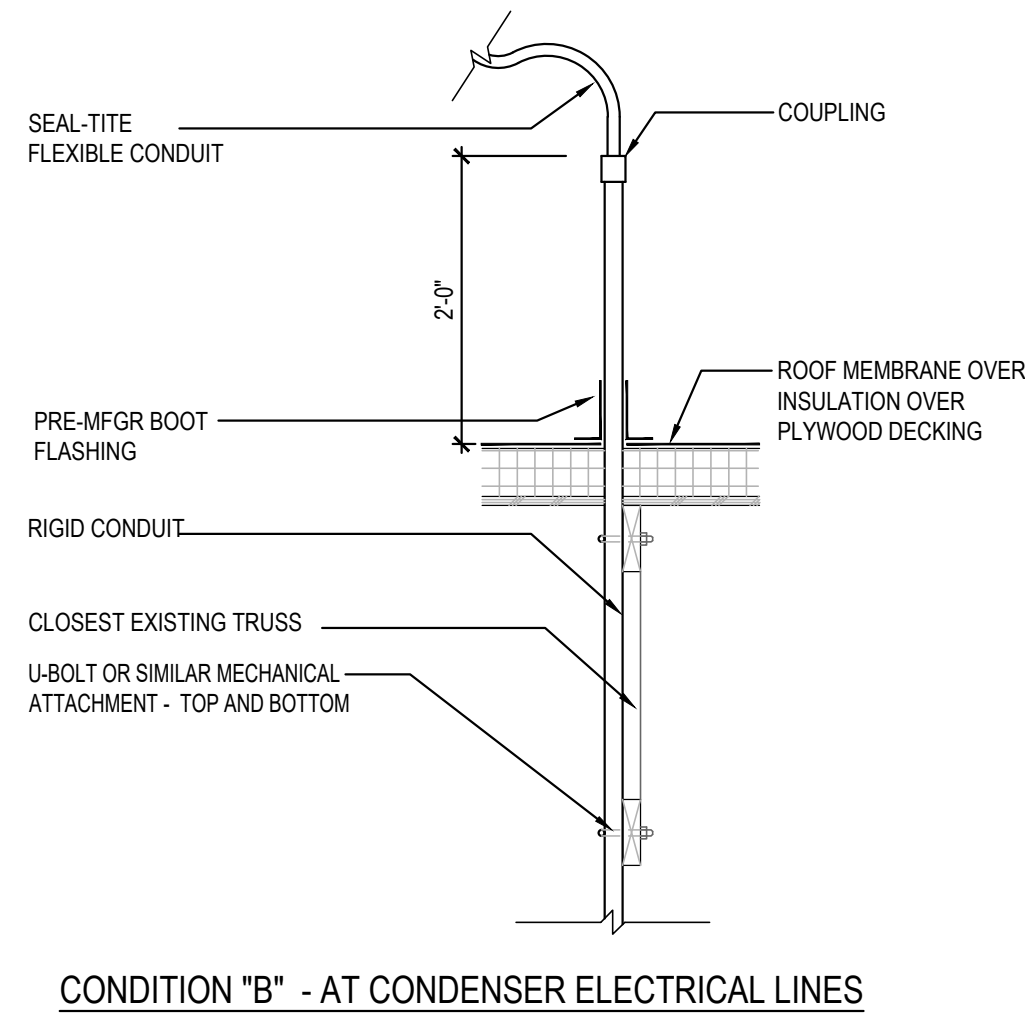


CONDENSER RACK ISOMETRIC

3

Scale= 3/4" = 1'-0"

A-108

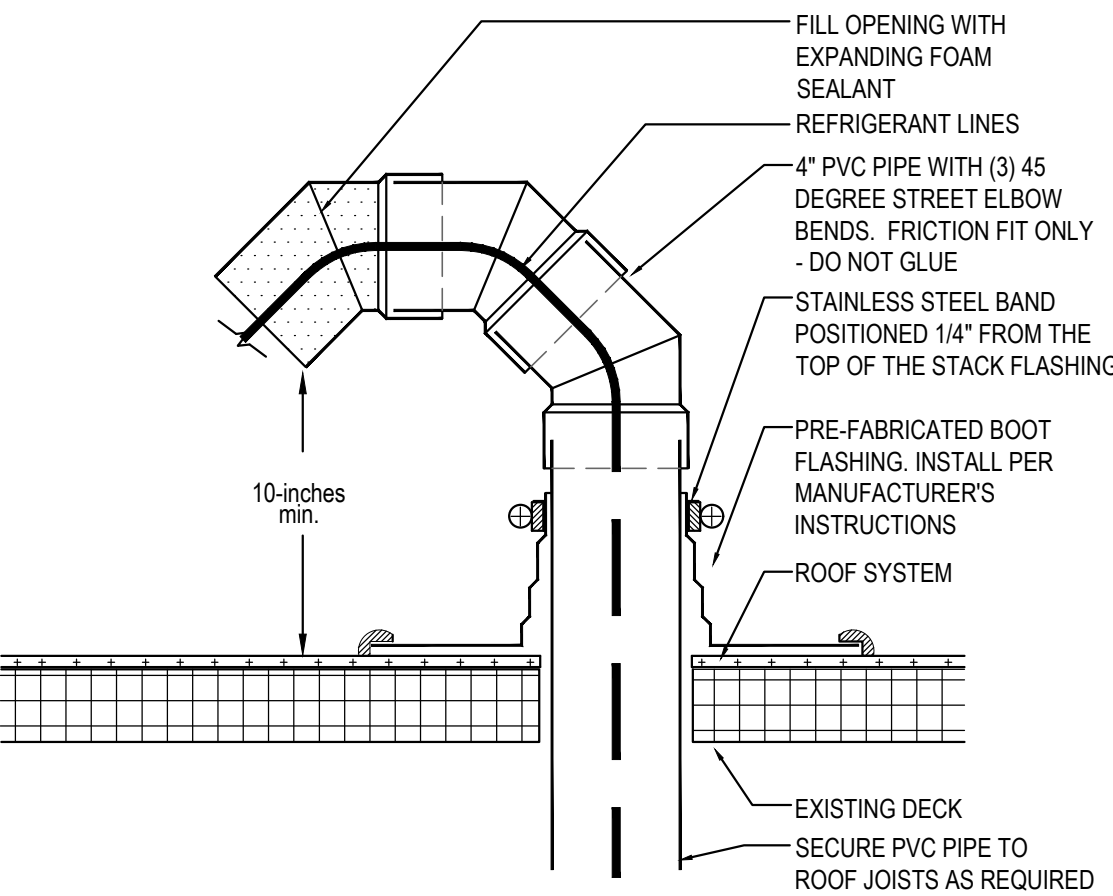


ROOF PENETRATION DETAIL AT REF. / ELEC. LINES

2

Scale= 3/4" = 1'-0"

A-108

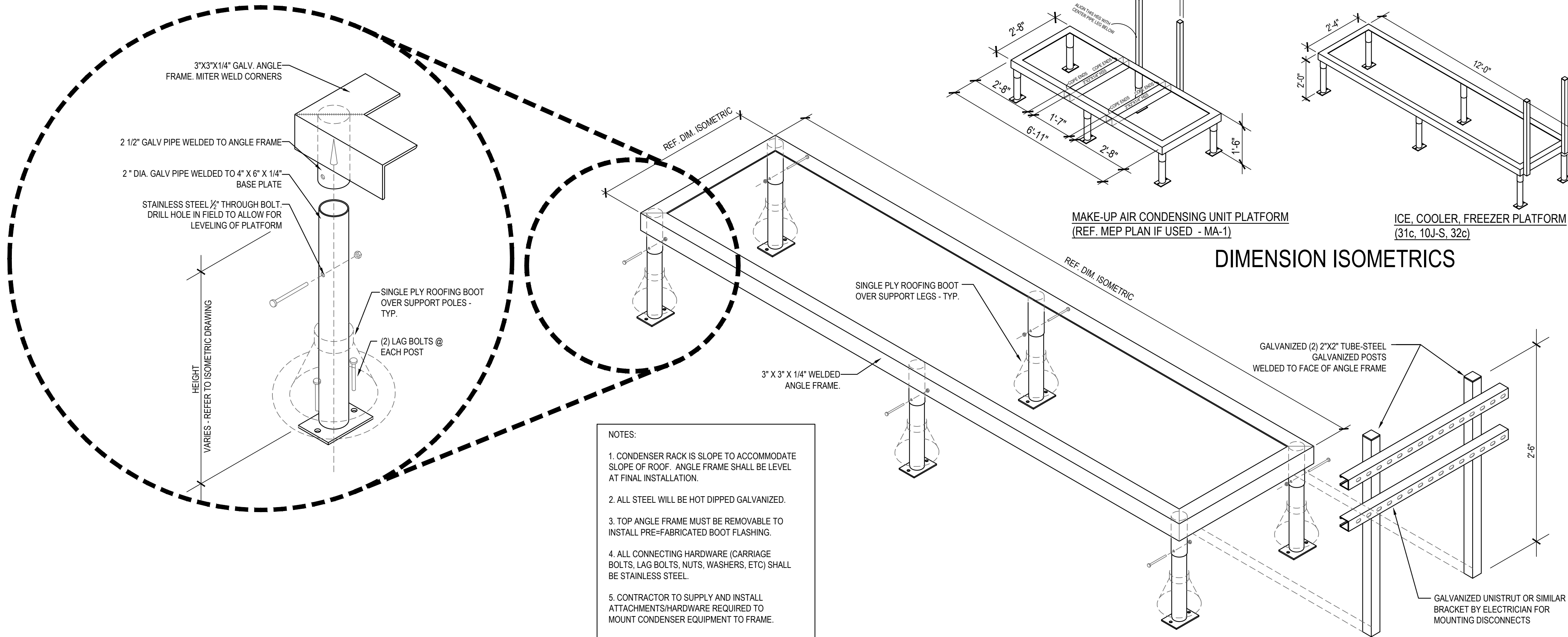


PVC ROOF PENETRATION

4

Scale= 1/2" = 1'-0"

A-108



- NOTES:
- CONDENSER RACK IS SLOPE TO ACCOMMODATE SLOPE OF ROOF. ANGLE FRAME SHALL BE LEVEL AT FINAL INSTALLATION.
  - ALL STEEL WILL BE HOT DIPPED GALVANIZED.
  - TOP ANGLE FRAME MUST BE REMOVABLE TO INSTALL PRE-FABRICATED BOOT FLASHING.
  - ALL CONNECTING HARDWARE (CARRIAGE BOLTS, LAG BOLTS, NUTS, WASHERS, ETC) SHALL BE STAINLESS STEEL.
  - CONTRACTOR TO SUPPLY AND INSTALL ATTACHMENT HARDWARE REQUIRED TO MOUNT CONDENSER EQUIPMENT TO FRAME.
  - UNISTRUT SHALL BE GALVANIZED

FREEZER / COOLER / ICE MAKER CONDENSER RACK DETAILS

1

Scale= 3/4" = 1'-0"

A-108



PANDA EXPRESS, INC.  
1683 Walnut Grove Ave.  
Rosemead, California  
91770  
Telephone: 626.799.9898  
Facsimile: 626.372.8288

All ideas, designs, arrangement and plans indicated or represented by this drawing are the property of Panda Express Inc. and were created for use on this specific project. None of these ideas, designs, arrangements or plans may be used by or disclosed to any person, firm, or corporation without the written permission of Panda Express Inc.

REVISIONS:

1	BID SET	2023-05-02

ISSUE DATE:

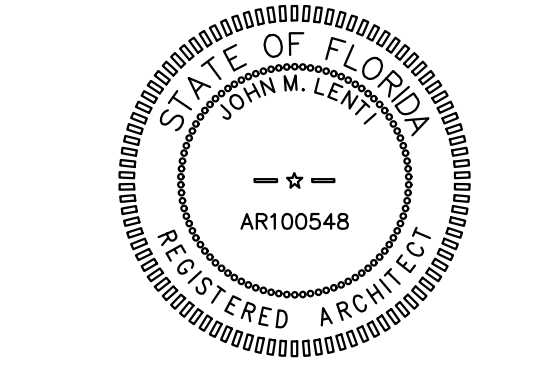
1	BID SET	2023-05-02

DRAWN BY:

PANDA PROJECT #: S4-24-D22020  
ARCH PROJECT #: P7377

www.cphcorp.com  
A Full Service A & E Firm

Plans Prepared By  
**CPL, LLC**  
500 West Fulton St.  
Sanford, FL 32771  
Ph: 407.322.6841  
Licenses:  
Eng. C.O.A. No. 3215  
Survey L.B. No. 7143  
Arch. Lic. No. AA2600926  
Lndscp. Lic. No. LC0000298



PANDA EXPRESS  
PANDA END CAP  
3301 W HILLSBORO BLVD  
DEERFIELD BEACH, FL 33442

A-108

CONDENSER RACK  
DETAIL

PANDA HOME 2600 R4/DAB