

CORNER RECORD

Document Number CR 8341

City of BERKELEY

County of ALAMEDA, California

Brief Legal Description CITY OF BERKELEY MONUMENT B1754

CORNER TYPE

Government Corner Control **X**
Meander Property
Rancho Other
Date of Survey **3-17-2016**

COORDINATES (Optional)

N. _____
E. _____
Zone _____ NAD27 . NAD83 .
NAD83 Epoch _____
Elev. _____
Vert. Datum: NGVD29 . NAVD88 .
Meas. Units: Metric . Imperial .

Corner – Left as found **X** Found and tagged Established Reestablished Rebuilt

Identification and type of corner found: Evidence used to identify or procedure used to establish or reestablish the corner:
IN COMPLIANCE WITH SECTION 8771 OF THE PROFESSIONAL LAND SURVEYORS' ACT, THIS CORNER
RECORD IS BEING FILED TO ESTABLISH THE POSITION OF AN EXISTING MONUMENT PRIOR TO
STREET REHABILITATION CONSTRUCTION.

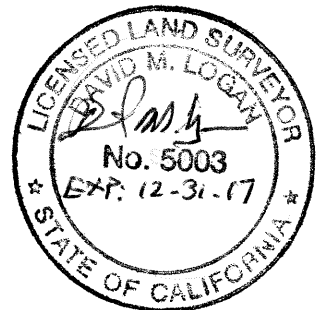
A description of the physical condition of the monument as found and as set or reset:

SEE PAGE 2

SURVEYOR'S STATEMENT

This Corner Record was prepared by me or under my direction in conformance with the Land Surveyor's Act on 4-4-2016.

Signed D. J. M. G. P.L.S or ~~P.C.E.~~ No. 5003



COUNTY SURVEYOR'S STATEMENT

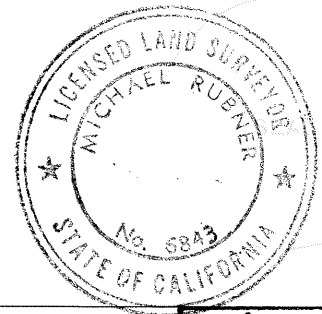
This Corner Record was received 25 APRIL, 2016

and examined and filed 6 MAY, 2016

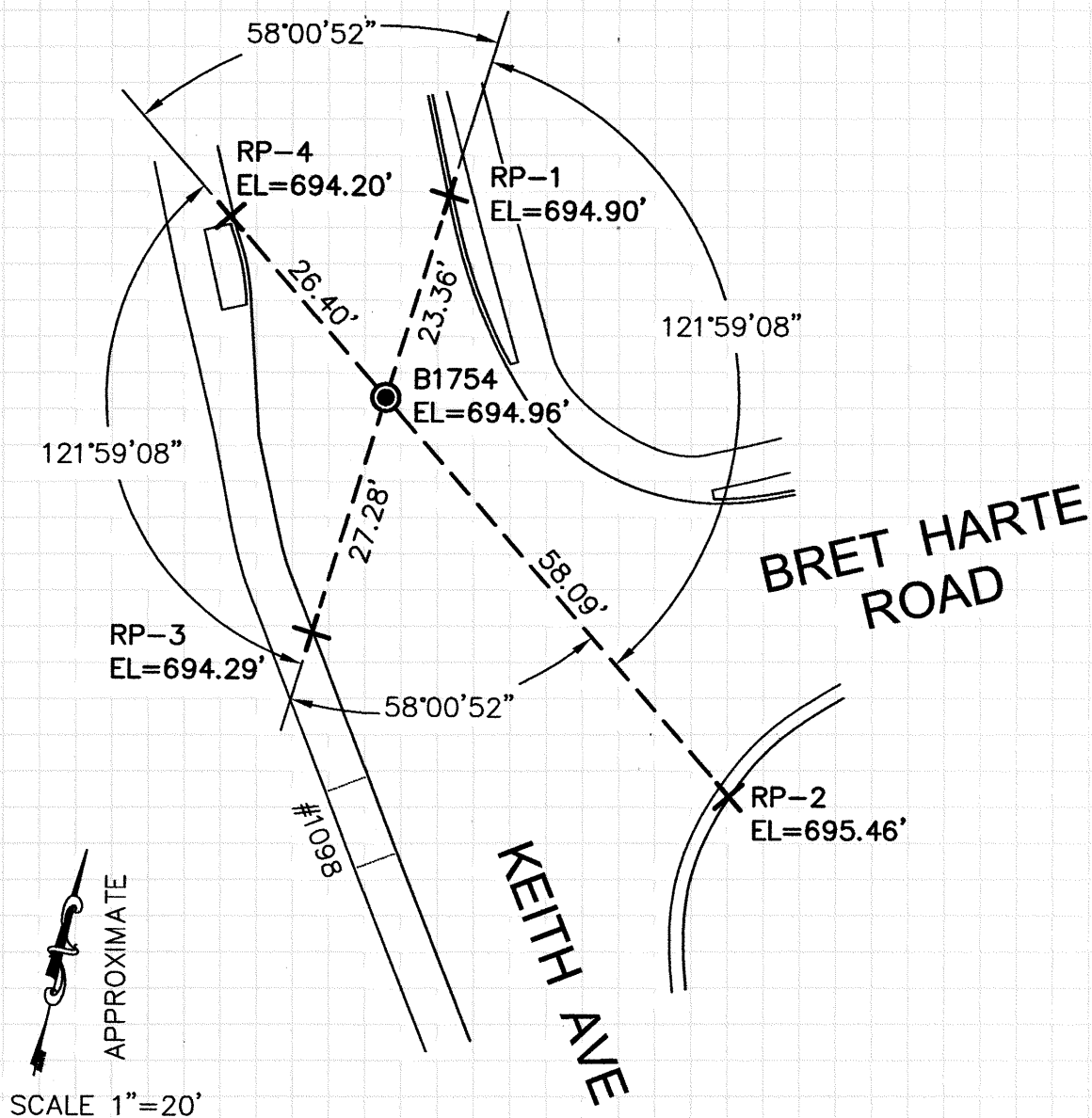
Signed Michael R. ... P.L.S or R.C.E. No. 6843

Title COUNTY SURVEYOR



County Surveyor's Comment



PV55K1



LEGEND

-  1/4" BRASS PIN CITY MONUMENT IN A STANDARD MONUMENT WELL
-  SET REFERENCE CROSS

NOTE:

THE EXISTING MONUMENT AS SHOWN IS REFERENCED BY STRAIGHT LINES BETWEEN RP-1 TO RP-3 AND RP-2 TO RP-4.