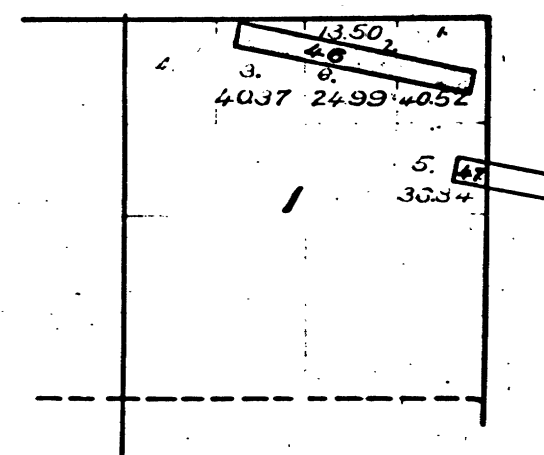


T3N. R13E. M.D.M.



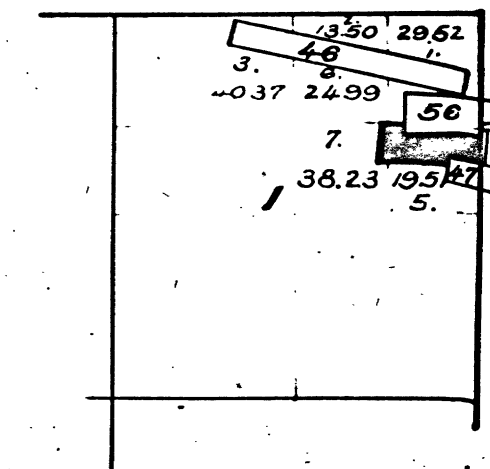
46 Fair Play Quartz Mine (556)  
47 Rocky Bar "

The above diagram of Section N<sup>o</sup> 1 Township N<sup>o</sup> 3 North, Range N<sup>o</sup> 13 East, Mount Diablo Meridian, is correctly copied from the original map as amended and on file in this Office.

U.S. Surveyor-General's Office,  
San Francisco, California.  
June 3<sup>rd</sup> 1882.

*Theo. Wagner.*  
U.S. Surv. Genl. Cal.

T3N. R13E. M.D.M.



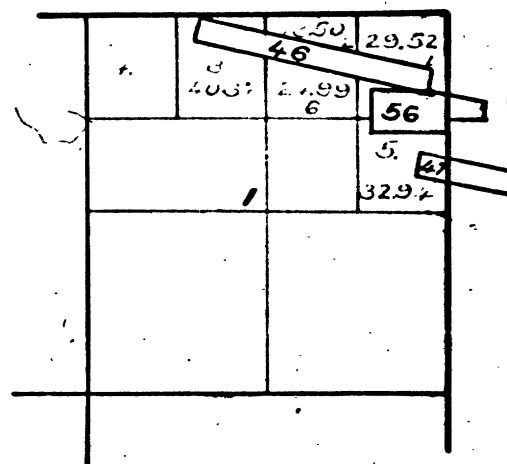
61 Roble Quartz Mine.

The above diagram showing amendments to Section 1 Township N<sup>o</sup> 3 North, Range N<sup>o</sup> 13 East, Mount Diablo Meridian, is correctly copied from the original map as amended and on file in this Office.

U.S. Surveyor-General's Office,  
San Francisco, California.  
April 3<sup>rd</sup> 1889.

*R. P. Hammond Jr.*  
U.S. Surv. Gen. Cal.

T3N. R13E. M.D.M.



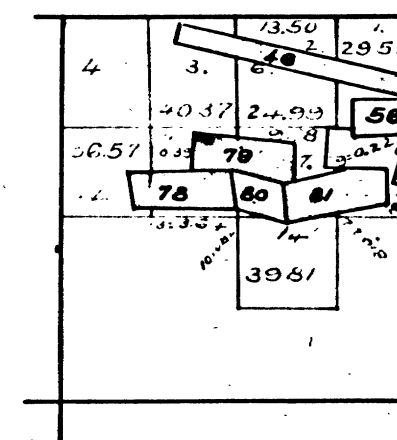
2635  
56 Beatrice Quartz Mine.

The above diagram of Section 1 of Township N<sup>o</sup> 3 North, Range N<sup>o</sup> 13 East, Mount Diablo Meridian, is correctly copied from the original map as amended and on file in this Office.

U.S. Surveyor-General's Office,  
San Francisco, California.  
November 29<sup>th</sup> 1887.

*R. P. Hammond Jr.*  
U.S. Surv. Genl. Cal.

T3N. R13E. M.D.M.



78 Buck Horn Con. Qtz. Buck Horn Location.  
79 Christmas  
80 Red Gold  
81 O.K. Miralda.

The above diagram of Section 1, Township 3 North, Range 13 East Mount Diablo Meridian, is correctly copied from the original map as amended and on file in this Office.

U.S. Surveyor-General's Office,  
San Francisco, California.  
May 29 1895.

41 241



*W. S. Green.*  
U.S. Surv. Genl. Cal.

DEPARTMENT OF THE INTERIOR,  
GENERAL LAND OFFICE,  
Washington, D. C. Feb. 5, 1908.  
I hereby certify that this is a true copy  
of the plats of official survey of the lands  
to which it related, on file in this office.

*W. S. Green.*  
Re-order, General Land Office.

T 3 N R 13 E M D

