

CORNER RECORD

Agency Index

BK 114 PG 33

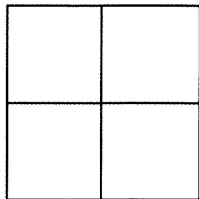
Document Number

CR 11752

City of FREMONTCounty of ALAMEDA, CaliforniaBrief Legal Description WELL MONUMENT LOCATED WITHIN ARDO ST
AT THE INTERSECTION OF ADRIANO ST AND GUSTAVO CT

CORNER TYPE

COORDINATES (Optional)



Government Corner	<input type="checkbox"/>	Control	<input checked="" type="checkbox"/>
Meander	<input type="checkbox"/>	Property	<input type="checkbox"/>
Rancho	<input type="checkbox"/>	Other	<input type="checkbox"/>

N. 2031938.6± E. 6117702.4±

Elevation

Units Metric ☐ U.S. Survey Foot ☒

Horizontal Datum

Zone Epoch Date

Vertical Datum

☐ Complies with Public Resources Code §§8801-8819☐ Complies with Public Resources Code §§8890-8902Date of Survey 6/19/18PLS Act Ref: ☐ 8765(d)☒ 8771☐ 8773☐ Other:Corner/
Monument: ☒ Left as found☐ Established☐ Rebuilt☒ Pre-Construction☐ Found and tagged☐ Reestablished☒ Referenced☐ Post-Construction

Narrative of corner identified and monument as found, set, reset, replaced, or removed:

☐ See sheet #2 for description(s) :

FOUND BRASS DISC AND PUNCH IN MONUMENT WELL.

FOUND AND SET POINTS AS SHOWN ON PAGE 2.

THIS POINT WAS REFERENCED PRIOR TO A CONSTRUCTION PROJECT IN THE VICINITY.

THE TIES SHOWN HEREON ARE FOR THE PURPOSE OF PERPETUATING FOUND MONUMENTATION.

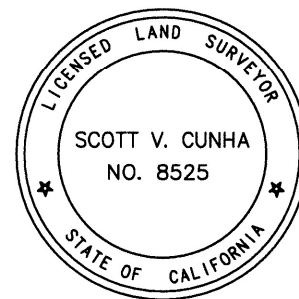
NO CLAIM IS MADE AS TO THE RELATIONSHIP OF THE POINTS OR LINES SHOWN HEREON TO TRUE BOUNDARY LOCATION.

SURVEYOR'S STATEMENT

This Corner Record was prepared by me or under my direction in conformance with

the Professional Land Surveyors' Act on JULY 6, 2018.Signed SCOTT V. CUNHA P.L.S. or R.C.E. No. LS 8525

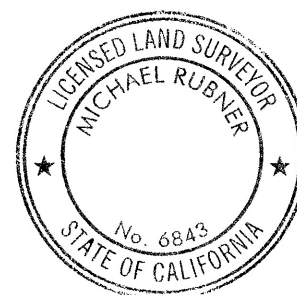
SCOTT V. CUNHA



COUNTY SURVEYOR'S STATEMENT

This Corner Record was received 13 JULY 2018and examined and filed 28 SEPTEMBER, 2018.Signed Michael Rubner P.L.S. or R.C.E. No. 6843Title COUNTY SURVEYOR

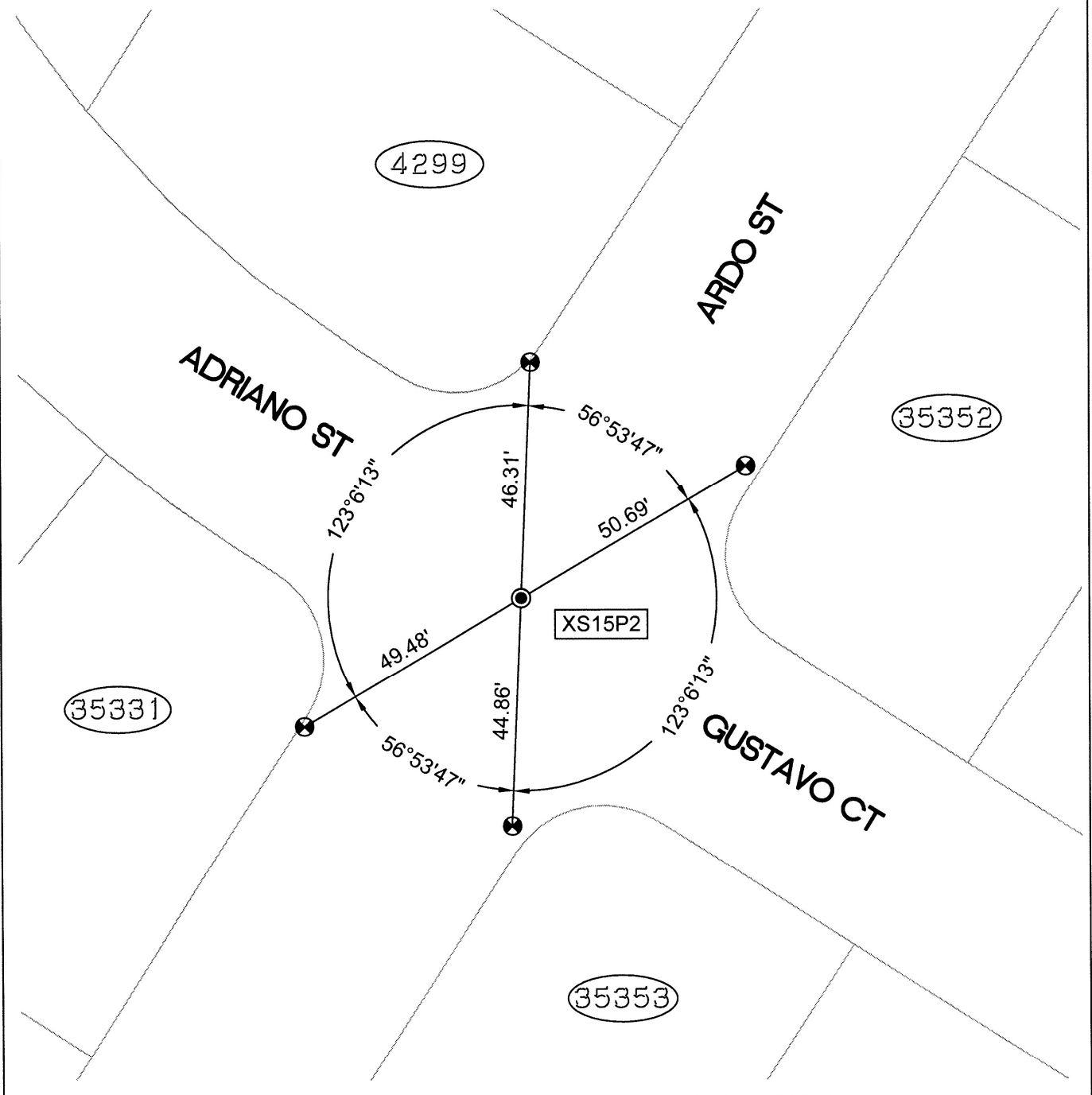
County Surveyor's Comment



SCALE: 1"=30'

LEGEND

- FOUND BRASS DISC WITH PUNCH IN MONUMENT WELL
- ⊗ SET CUT CROSS IN WALK
- AA##A# ALAMEDA COUNTY MONUMENT ID
- 19592 REFERENCE STREET ADDRESS



218072-Ardo-CR-05