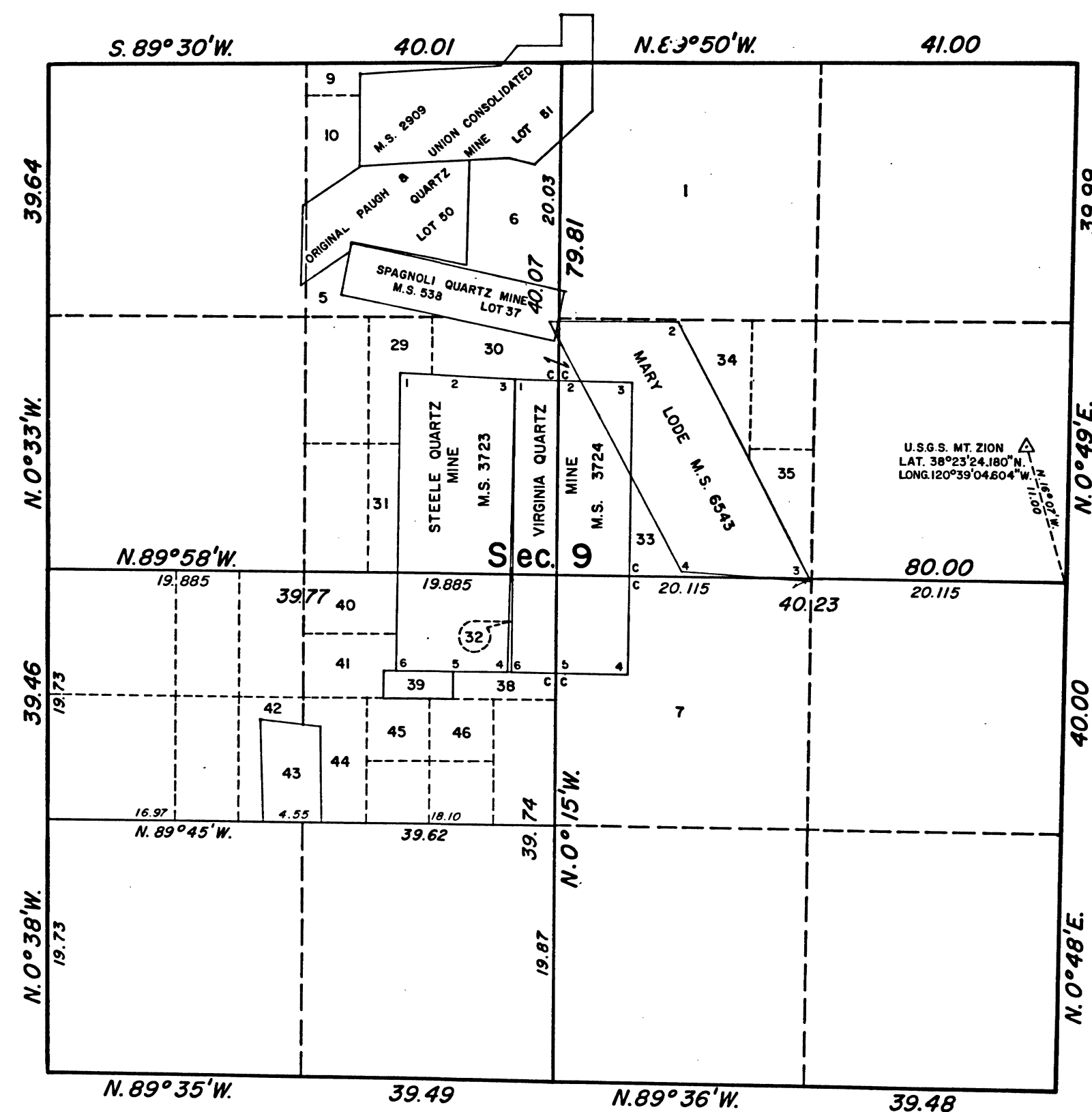


## TOWNSHIP 6 NORTH, RANGE 12 EAST, OF THE MOUNT DIABLO MERIDIAN, CALIFORNIA.

## SUPPLEMENTAL PLAT OF SECTION 9



This supplemental plat of section 9, Township 6 North, Range 12 East, Mount Diablo Meridian, California, showing amended lottings, is based upon the township plats approved May 2, 1870 and July 10, 1876; the plats accepted April 5, 1960 and April 9, 1973; diagrams dated March 2, 1874; December 31, 1875; July 9, 1880; December 21, 1889 and December 26, 1900; and approved mineral survey records.

UNITED STATES DEPARTMENT OF THE INTERIOR  
BUREAU OF LAND MANAGEMENT  
Washington, D.C. September 27, 1973

This plat, showing amended lottings, is based upon the official records and, having been correctly prepared in accordance with the regulations, is hereby accepted.

For the Director

*Clark F. Mumm*

Chief, Division of Cadastral Survey