

	1	2	3	4	5
D					
C					
B					
A					

GENERAL ELECTRICAL NOTES

1. THE ELECTRICAL CONTRACTOR SHALL COORDINATE ELECTRICAL WORK WITH OTHER TRADES. THE ARCHITECTURAL DRAWINGS SHALL TAKE PRECEDENCE OVER ALL OTHER DRAWINGS. DO NOT SCALE DISTANCES OFF THE ELECTRICAL DRAWINGS; USE ACTUAL BUILDING DIMENSIONS. OVERALL CASEWORK COMPONENT DIMENSIONING ON ELECTRICAL DETAILS ARE SHOWN FOR REFERENCE AND COORDINATION ONLY. SEE PROJECT MANUAL.
2. ALL ELECTRICAL SYSTEMS SHALL BE TESTED FOR PROPER OPERATION. BALANCE ALL BRANCH CIRCUIT LOADS BETWEEN THE PHASES OF THE SYSTEM WITHIN 10% OF THE HIGHEST PHASE LOAD IN EACH PANEL BOARD.
3. THE ELECTRICAL CONTRACTOR SHALL BE RESPONSIBLE FOR DE-ENERGIZING CIRCUITS IN DEMOLITION AREAS TO INSURE A SAFE CONDITION. ELECTRICAL DEVICES AND ASSOCIATED WIRING LOCATED WITHIN THE DEMOLITION AREA THAT WILL NO LONGER BE USED SHALL BE REMOVED AND PROPERLY DISPOSED OF AT CONTRACTORS EXPENSE UNLESS OTHERWISE NOTED.
4. THE ELECTRICAL CONTRACTOR SHALL SCHEDULE ALL ELECTRICAL SYSTEM OUTAGES WITH THE GENERAL CONTRACTOR AND LANDLORD AT LEAST 24 HOURS IN ADVANCE. UNLESS APPROVED OTHERWISE ALL OUTAGES SHALL OCCUR BETWEEN 11:00PM AND 5:00AM.
5. ELECTRICAL CONTRACTOR SHALL FURNISH AND INSTALL ALL NECESSARY CONDUIT AND J-BOXES TO SUPPORT A COMPLETE SECURITY, PHONE, POS AND DATA SYSTEMS. SEE MANAGER WORKSTATION AND BAR POINT OF SALE (POS) POWER/TELECOM/SECURITY DIAGRAM. COORDINATE ALL DEVICE LOCATIONS AND MOUNTING HEIGHTS WITH SECURITY VENDOR PRIOR TO ROUGH-IN. PROVIDE END-TO-END PULL STRINGS IN ALL CONDUITS. LABEL EACH END OF THE PULL STRING WITH CONDUIT SYSTEM ("SECURITY") AND DESTINATION ("CAFE", "FRONT BAR", ETC.). PROVIDE INSULATED BUSHINGS ON ALL STUBBED-UP AND EXPOSED CONDUIT ENDS.
6. ELECTRICAL CONTRACTOR SHALL COORDINATE WITH THE GENERAL CONTRACTOR TO PATCH AND REPAIR ALL EXISTING WALLS, FLOORS, CEILINGS OR OTHER SURFACES IDENTIFIED TO REMAIN THAT MAY BECOME DAMAGED DURING THE COURSE OF WORK.
7. EXPOSED/SURFACE MOUNTED CONDUITS SHALL ONLY BE ALLOWED WHERE NECESSARY IN EXPOSED CEILING AREAS. IF CONDUITS NEED TO BE SURFACE MOUNTED TO WALLS, COORDINATE WITH STARBUCKS CONSTRUCTION MANAGER FOR APPROVAL.
8. VERIFY LOCATION OF ALL OUTLETS AND SWITCHES WITH ARCHITECTURAL DRAWINGS, INTERIOR DETAILS, FINISH SCHEDULES, GENERAL CONTRACTOR, EQUIPMENT VENDORS, STARBUCKS AND EXISTING SITE CONDITIONS. VERIFY FINAL DOOR HINGE LOCATION PRIOR TO SWITCH INSTALLATION AND ADJUST SWITCH LOCATION IF NEEDED. DO NOT MOUNT RECEPTACLES/SWITCHES IN LOCATIONS THAT WOULD CONFLICT WITH MIRRORS, SEAMS OF WALLS, WAINSCOTS, TILE TRANSITIONS, ETC...
9. PROVIDE TEMPORARY ELECTRICAL POWER TO THE PREMISES IF PERMANENT POWER IS NOT AVAILABLE AT THE TIME OF POSSESSION.

ABBREVIATIONS

AFF	ABOVE FINISHED FLOOR
AHJ	AUTHORITIES HAVING JURISDICTION
APPROX	APPROXIMATE
BLDG	BUILDING
CKT	CIRCUIT
CLG	CEILING
CM	STARBUCKS CONSTRUCTION MANAGER
CONST	CONSTRUCTION
CW	COLD WATER
CXA	COMMISSIONING AGENT
DEG	DEGREES
DL	LIGHTS WITHIN DAYLIGHT ZONE
DM	STARBUCKS DESIGN MANAGER
DN	DOWN
DTL	DETAIL
DWG(S)	DRAWING(S)
EA	EACH
EC	ELECTRICAL CONTRACTOR
ECP	EQUIPMENT CONTROL PAC
EG	EXHAUST GRILLE
ELEC	ELECTRICAL
EM	EMERGENCY
EMS	ENERGY MANAGEMENT SYSTEM
EXIST/EX	EXISTING
EXT	EXTERIOR
F&I	FURNISH & INSTALL
FOIC	FURNISHED BY OWNER, INSTALLED BY CONTRACTOR
FOIO	FURNISHED BY OWNER, INSTALLED BY OWNER
FLR	FLOOR
FT	FOOT/FEET
GC	GENERAL CONTRACTOR
GFCI	GROUND FAULT CIRCUIT INTERRUPTER
GND	GROUND
HR	HOUR
HVAC	HEATING, VENTILATION, AIR CONDITIONING
HW	HOT WATER
LCP	LIGHTING CONTROL PANEL
LL	LANDLORD
LS	LIGHT SENSOR PHOTOCELL
LV	LOW VOLTAGE
MAX	MAXIMUM
MC	MECHANICAL CONTRACTOR
MDP	MAIN DISTRIBUTION PANEL
MECH	MECHANICAL
MEP	MECHANICAL, ELECTRICAL, AND PLUMBING
MFG	MANUFACTURER
MIN	MINIMUM
NL	NIGHTLIGHT
NTS	NOT TO SCALE
OC	OVERCURRENT PROTECTION
PIR	PASSIVE INFRARED SENSOR
REF	REFERENCE
REQ(D)	REQUIRE(D)
REV	REVISION
SF	SQUARE FEET
SHT	SHEET
SPECS	SPECIFICATION(S)
SST	STAINLESS STEEL
TEL	TELEPHONE
TEMP	TEMPORARY
TYP	TYPICAL
UC	UNDER COUNTER
UNO	UNLESS NOTED OTHERWISE
WH	WATER HEATER
WP	WEATHER PROOF

ELECTRICAL SYMBOL LEGEND

	JUNCTION BOX		RECEPTACLE: DUPLEX
	SWITCH		RECEPTACLE: DUPLEX - INDIVIDUAL BRANCH CIRCUIT
	THREE-WAY SWITCH		RECEPTACLE: QUAD
	MOTION (OCCUPANCY) SENSOR SWITCH		RECEPTACLE: QUAD - INDIVIDUAL BRANCH CIRCUIT
	SWITCHBACK		RECEPTACLE: HIGH VOLTAGE
	TELEPHONE		RECEPTACLE: FLOOR DUPLEX
	THERMOSTAT		GROUNDING ELECTRODE CONNECTION
	THERMOSTAT SENSOR	NL	NIGHTLIGHTING 24HR/DAY
	DIMMER SWITCH		PHOTOELECTRIC CELL
	RECEPTACLE: DATA		SPEAKER
	RACEWAY CONCEALED IN CEILING OR WALL. #12 AWG WIRE UNLESS OTHERWISE NOTED.		WIFI ACCESS POINT
	FS- FLOW SWITCH		360 CAMERA
	TS- TAMPER SWITCH		CARBON MONOXIDE SENSOR
	MANUAL PULL STATION		CARBON DIOXIDE SENSOR
	ADA STROBE UNIT		DUCT SMOKE DETECTOR
	VACANCY SENSOR SWITCH		

FIRE ALARM SYSTEM NOTES

IF REQUIRED BY APPLICABLE CODES FOR TENANT USE: PERMIT, FURNISH AND INSTALL BUILDING MONITORING AND FIRE PROTECTION ALARM SYSTEM BASED ON TENANTS CONSTRUCTION DOCUMENTS. THE SYSTEM SHALL INCLUDE AUDIBLE ALARMS, VISUAL STROBES, DUCT SMOKE AND HEAT DETECTORS AND PULL STATIONS PER ALL APPLICABLE CODES. ANY AND ALL MODIFICATIONS TO BE BASED ON BUILDING DESIGN AS REQUIRED TO COORDINATE WITH TENANT CONSTRUCTION DOCUMENTS SHALL BE AT THE EXPENSE OF THE LANDLORD AND SHALL BE ACCOMPLISHED IN THE ACCORDANCE WITH THE TENANTS OPENING SCHEDULE. PROVIDE ALL TIE-INS TO BUILDING SMOKE DETECTORS, FLOW SWITCH VALVE AND DUCT SMOKE/HEAT DEECTORS. THE SYSTEM MUST BE PROGRAMMED AND FUNCTIONAL. CENTRAL STATION MONITORING, IF REQUIRED, SHALL BE PROVIDED BY LANDLORD. PROVIDE ALL COORDINATION, TESTING AND INSPECTIONS FOR A FULLY FUNCTIONAL FIRE ALARM SYSTEM ABLE TO OBTAIN TENANTS PERMANENT CERTIFICATION OF OCCUPANCY AND TO MEET TENANTS OPENING SCHEDULE.

GENERAL NOTES

**SCOPE**  
THE INTENT OF THE DRAWINGS AND PROJECT MANUAL IS TO PROVIDE A COMPLETE AND FULLY OPERATIONAL ELECTRICAL SYSTEM. THE ELECTRICAL CONTRACTOR SHALL FURNISH AND INSTALL ALL LABOR, MATERIAL, AND EQUIPMENT NECESSARY TO COMPLETE THE ELECTRICAL WORK.

**SITE EXAMINATION**  
THE ELECTRICAL CONTRACTOR SHALL THOROUGHLY EXAMINE ALL AREAS WHERE EQUIPMENT, CONDUIT, AND WIRING WILL BE INSTALLED AND WILL REPORT ANY CONDITION THAT, IN HIS OPINION, PREVENTS THE PROPER INSTALLATION OF THE ELECTRICAL WORK.

**STANDARDS**  
EQUIPMENT AND MATERIALS SHALL CONFORM WITH APPROPRIATE PROVISIONS OF CSA, ULC, NEC, ASTM, UL, ETL, NEMA, ANSI, AS APPLICABLE TO EACH INDIVIDUAL UNIT OR ASSEMBLY.

**CODES**  
ALL WORK SHALL BE PERFORMED IN STRICT ACCORDANCE WITH ALL APPLICABLE PROVINCIAL AND LOCAL CODES AND ORDINANCES. IN CASE OF CONFLICT BETWEEN THE DRAWINGS AND SPECIFICATIONS AND THE CODES, THE HIGHEST STANDARD SHALL APPLY. ELECTRICAL CONTRACTOR SHALL SATISFY CODE REQUIREMENTS AS A MINIMUM STANDARD WITHOUT ANY EXTRA COST TO STARBUCKS.

**PERMITS AND FEES**  
THE ELECTRICAL CONTRACTOR SHALL PROCURE AND PAY FOR ALL PERMITS, FEES, AND INSPECTIONS NECESSARY TO COMPLETE THE ELECTRICAL WORK.

**WARRANTY**  
THE ELECTRICAL CONTRACTOR SHALL UNCONDITIONALLY WARRANT ALL WORK TO BE FREE OF DEFECTS IN MATERIAL AND WORKMANSHIP FOR A PERIOD OF ONE (1) YEAR FROM THE DATE OF FINAL ACCEPTANCE BY STARBUCKS AND WILL REPAIR OR REPLACE ANY DEFECTIVE WORK PROMPTLY AND WITHOUT CHARGE AND RESTORE ANY OTHER EXISTING WORK DAMAGED IN THE COURSE OF REPAIRING DEFECTIVE MATERIALS AND WORKMANSHIP.



**GPD GROUP**  
Professional Corporation  
520 S. MAIN ST.  
SUITE 2531  
AKRON, OH 44311  
PHONE: 330.572.2100  
FAX: 330.572.2101

DESCRIPTION	
REV.	DATE



08/27/2021

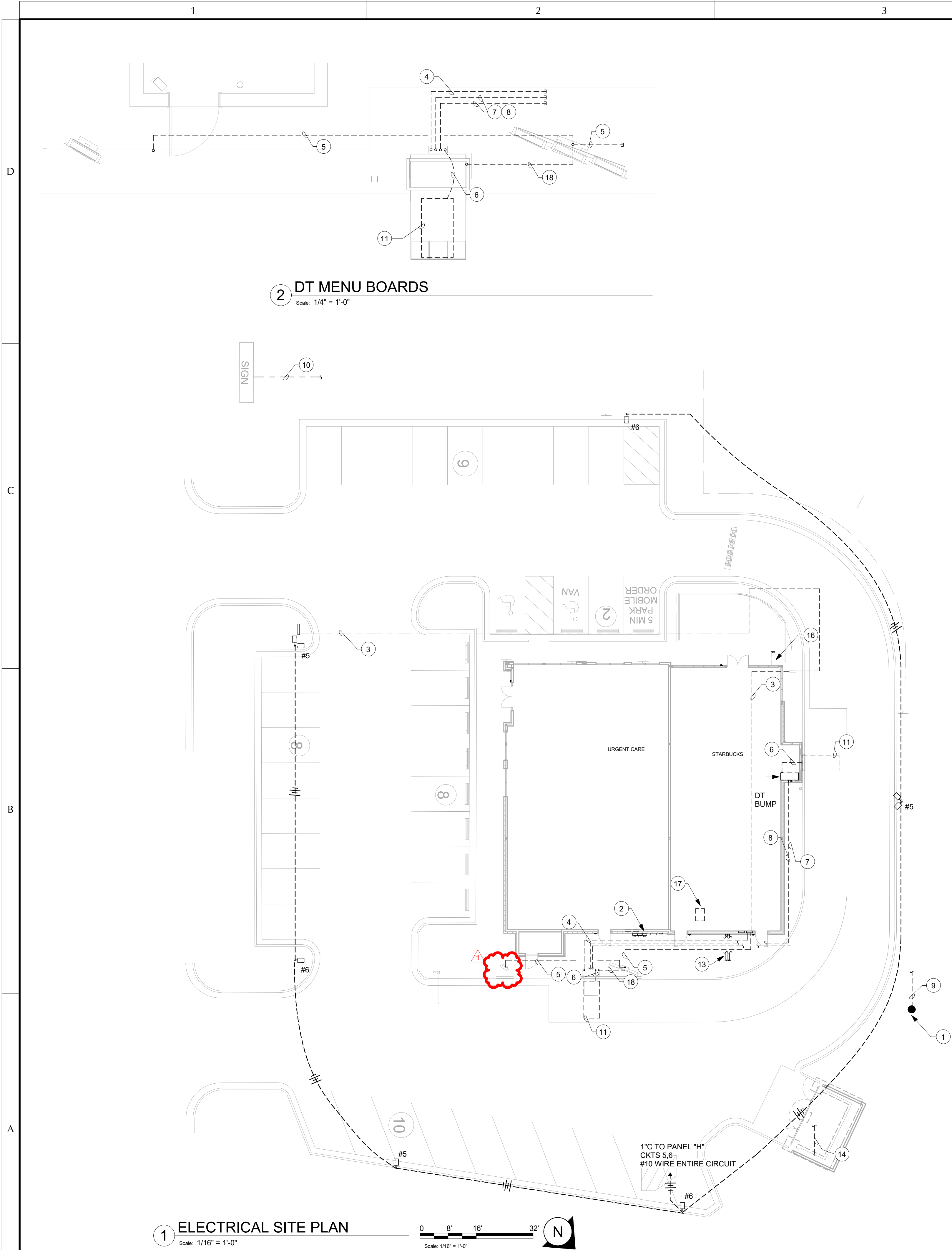
MARIETTA HWY & I-575  
5068 MARIETTA HIGHWAY  
CANTON, GA 30114

ELECTRICAL NOTES

	DATE
ISSUED FOR CONSTRUCTION	
BID	
PROJECT MANAGER	DESIGNER
AK	AS

JOB NO.  
2020379.07

E0001



1 ELECTRICAL SITE PLAN  
Scale: 1/16" = 1'-0"

2 DT MENU BOARDS  
Scale: 1/4" = 1'-0"

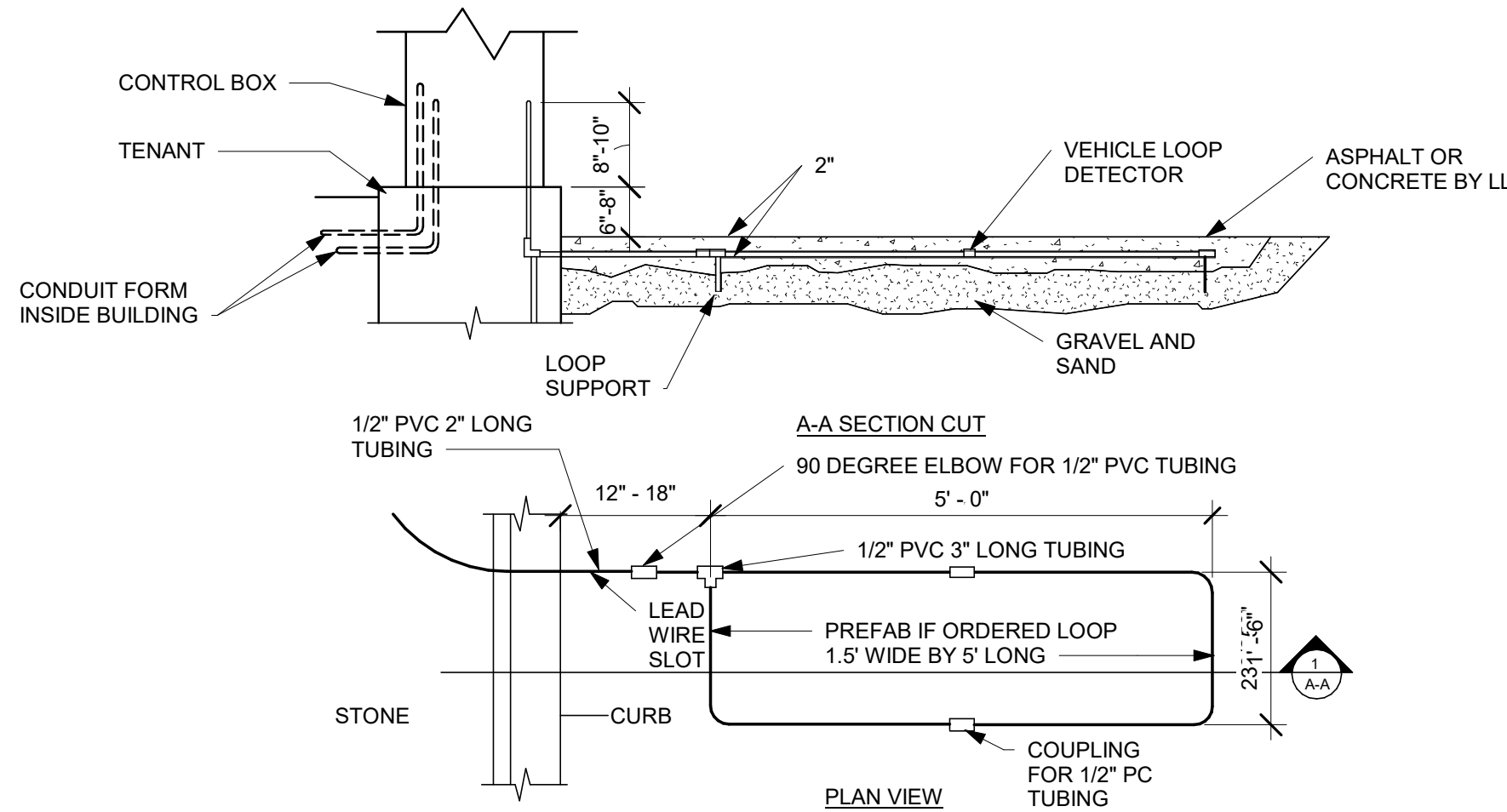
4 DT SENSOR LOOP DETAIL  
Scale: NTS

### KEYED NOTES

1. LOCATION OF EXISTING POLE MOUNTED TRANSFORMER.
2. LOCATION OF ELECTRIC METER AND CT CABINET.
3. 1" CONDUIT FOR DRIVE THROUGH DIRECTIONAL SIGN.
4. 1" CONDUIT FOR DIGITAL ORDER SCREEN POWER.
5. 1" CONDUIT FOR MENU BOARD AND PRE MENU BOARD POWER.
6. 1" CONDUIT FOR DETECTOR LOOP TO BE RAN UNDERGROUND. CONDUIT AND STRINGS.
7. DATA FOR SPEAKER. RUN 1" UNDERGROUND TO DATA RACK.
8. AUDIO/VIDEO FOR SPEAKER POST AND DETECTOR LOOP TO BE RAN THROUGH 1" UNDERGROUND INTO BUILDING AND THEN ROUTED TO DT POS AREA.
9. SEE ONE LINE FOR MORE INFORMATION.
10. 1" CONDUIT FOR PYLON SIGN.
11. DETECTOR LOOP TO BE CENTERED ON DT WINDOW / ORDER SPEAKER. COORDINATE WITH GC. TO BE 2" BELOW DT PAVEMENT.
12. SITE LIGHTING TO BE INSTALLED AND WIRED BY LANDLORD.
13. (3) 1" SPARE CONDUITS TO BE RUN THROUGH FOUNDATION ADJACENT TO ELECTRIC PANEL. TERMINATE CONDUITS AT GRADE OF EXTERIOR SIDE AND EXTEND ABOVE CEILING ON INTERIOR SIDE.
14. (1) 1" CONDUIT FROM TRASH ENCLOSURE TO PANELS.
15. NOT USED.
16. (2) 1" CONDUITS FROM PANELS THROUGH FOUNDATION WALL. TO PATIO SEATING AREA. TERMINATE CONDUIT AT GRADE IN PLANTER ADJACENT TO PATIO SEATING.
17. APPROXIMATE LOCATION OF DATA RACK. COORDINATE INSTALLATION OF TELECOMMUNICATIONS SERVICE WITH LANDLORD.
18. 1" CONDUIT FOR LED LIGHT ON ORDER SCREEN CANOPY TO CONNECT WITH CONDUIT FOR MENU BOARDS.

### ELECTRICAL SITE PLAN NOTES

1. PROVIDE PULL STRINGS IN ALL CONDUITS FOR TENANT USE.
2. STUB CONDUITS UP THRU FOUNDATION OF FUTURE TNEANT EQUIPMENT
3. REFER TO CIVIL CONSTRUCTION DOCUMENTS INCLUDING SITE UTILITY PLAN FOR MORE INFORMATION.



REV.	DATE	DESCRIPTION
1	08/27/2021	BUILDING DEPARTMENT REVISIONS



MARIETTA HWY & I-575  
5068 MARIETTA HIGHWAY  
CANTON, GA 30114

ELECTRICAL SITE PLAN

ISSUED FOR CONSTRUCTION	DATE
BID	

PROJECT MANAGER	DESIGNER
AK	AS

JOB NO.  
**2020379.07**

**E1000**



1

2

3

4

5

## GENERAL NOTES

- A. ELECTRICAL CONTRACTOR SHALL COORDINATE WITH PLUMBING AND HEATING, VENTILATING, AND AIR CONDITIONING (HVAC) CONTRACTORS FOR ANY ADDITIONAL EQUIPMENT NEEDING POWER.
- B. EQUIPMENT REQUIRES CONNECTION TO THE BUILDING ELECTRICAL SYSTEM. FURNISH AND INSTALL ALL NECESSARY CONDUIT, WIRE, CONNECTIONS, RECEPTACLES AND OVERCURRENT PROTECTION NECESSARY TO ENSURE THE EQUIPMENT FUNCTIONS PROPERLY AND COMPLIES WITH ALL APPLICABLE LOCAL AND NATIONAL CODES. COORDINATE EQUIPMENT REQUIREMENTS WITH MANUFACTURER CUT SHEET PRIOR TO ROUGH-IN.
- C. IF REQUIRED BY LOCAL JURISDICTION, PROVIDE HORN/STROPE DEVICE AND PULL STATION AT EACH DOOR. FIRE ALARM CONTROL PANEL (FACP) TO BE INSTALLED IN UTILITY ROOM.
- D. REFERENCE LANDLORD WORK LETTER FOR DIVISION OF ELECTRICAL SCOPE OF WORK AND COORDINATE WITH STARBUCKS CONSTRUCTION MANAGER.

## KEYED NOTES

1. INTERIOR LIGHTING IS PART OF TENANT SCOPE OF WORK. PROVIDE LIGHTING IN SHELL AS REQUIRED TO MEET LOCAL CODE.
2. EMERGENCY/EXIT LIGHTS TO BE WIRED AHEAD OF ANY CONTROLS.
3. LIGHTS TO BE CONTROLLED VIA TIME CLOCK/CONTRACTOR (T/C). COORDINATE SCHEDULE WITH CONSTRUCTION MANAGER AND LANDLORD. WIRING THROUGHOUT CIRCUIT SHALL BE #10, 1#10G.
4. COORDINATE INSTALLATION REQUIREMENTS FOR AIR CURTAIN AND DT WINDOW WITH MANUFACTURER SPECIFICATIONS.
5. PROVIDE J-BOX AND WEATHER PROOF TOGGLE SWITCH FOR RESTROOM EXHAUST FAN. COORDINATE WIRING WITH TENANT CONSTRUCTION DOCUMENTS.
6. RTU PROVIDED WITH WEATHER PROOF/GFCI RECEPTACLE. E.C. SHALL PROVIDE WIRING TO EACH RECEPTACLE.
7. TIMECLOCK AND CONTRACTOR IN NEMA 3R ENCLOSURE FOR EXTERIOR LIGHTING.
8. COORDINATE INSTALLATION OF TELECOM EQUIPMENT WITH UTILITY COMPANY. PROVIDE GROUND BAR FOR TELECOM EQUIPMENT.
9. ROUTE CONDUIT AND WIRING UNDERGROUND FROM DISCONNECT SWITCH TO PANEL "A" IN STARBUCKS SPACE. SEE SINGLE-LINE DIAGRAM FOR SIZES.
10. PROVIDE POWER FOR STRING LIGHTS ON PATIO. COORDINATE EXACT LOCATION AND REQUIREMENTS WITH LIGHTING VENDOR AND CONSTRUCTION SUPERVISOR PRIOR TO ROUGH-IN.
11. PROVIDE JUNCTION BOX FOR FUTURE BUILDING SIGNS. STUB CONDUITS INTO BUILDING WITH PULL STRINGS. COORDINATE LOCATIONS WITH SIGNAGE VENDOR AND ARCH. ELEVATIONS.
12. LOCATION OF FIRE ALARM CONTROL PANEL.
13. MANUAL PULL STATION. MOUNT AT 48" AFF.
14. ADA HORN/STROBE UNIT. MOUNT AT 8'-0" AFF. HORN/STROBE FOR SPRINKLER FLOW NOTIFICATION.
15. PROVIDE (1) COLUMBIA #CL-4-35-ML-ED-U-GSHC OR EQUAL LIGHT FIXTURE. CHAIN SUSPENDED AT 7'-0" AFF. CONNECT TO H-8 AND CONTROLLED BY WALL VACANCY SENSOR.
16. MANUAL PULL STATION. MOUNT ON COLUMN AT 48" AFF.

DESCRIPTION  
BUILDING DEPARTMENT REVISIONS

DATE  
08/27/2021

REV.  
1



08/27/2021

MARIETTA HWY & I-575  
5068 MARIETTA HIGHWAY  
CANTON, GA 30114

## ELECTRICAL PLAN

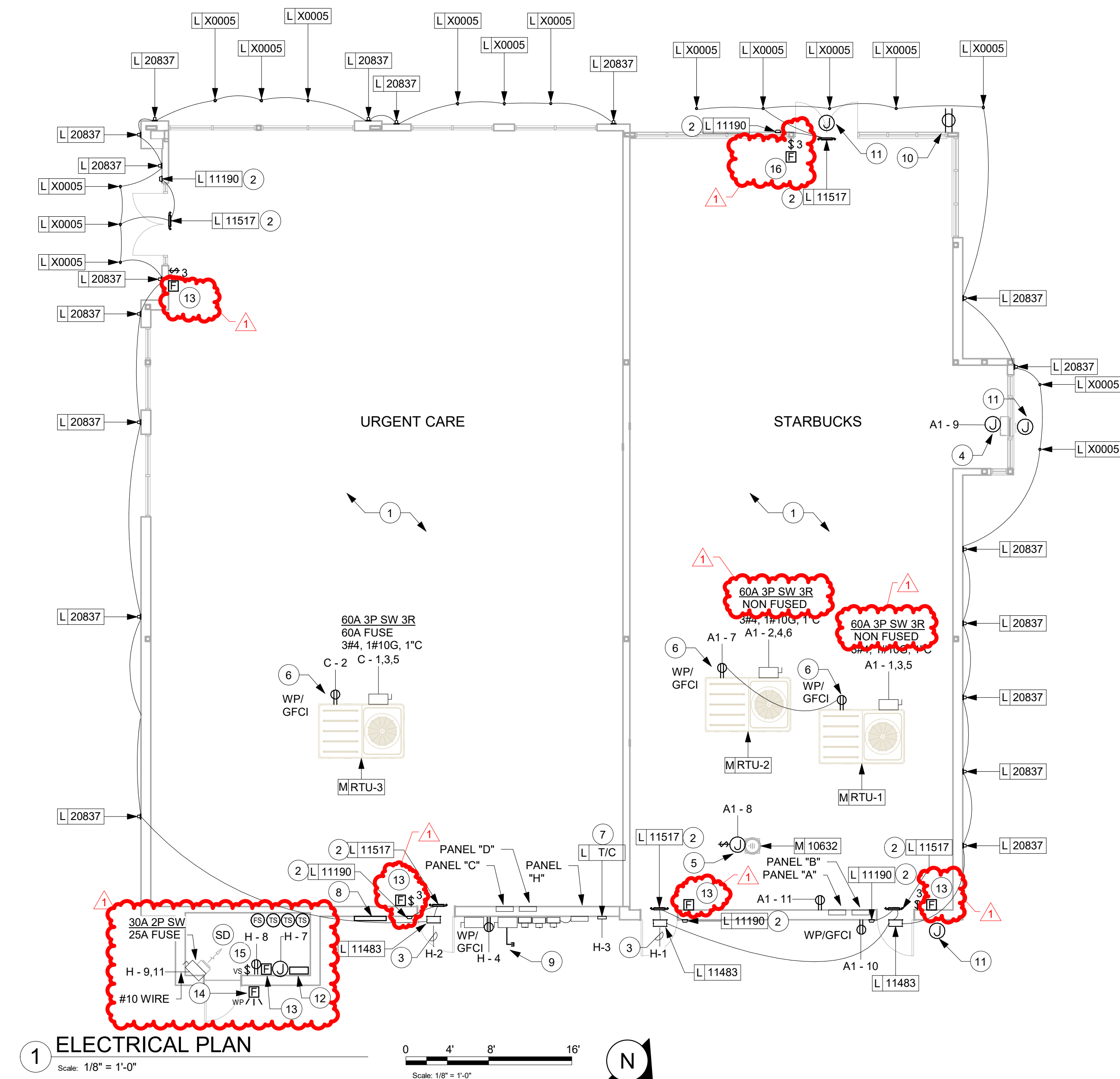
ISSUED FOR CONSTRUCTION	DATE
BID	

PROJECT MANAGER	DESIGNER
AK	AS

JOB NO.  
2020379.07

E1001

LIGHTING FIXTURE SCHEDULE					
DESIGN ID	COUNT	DESCRIPTION	FURN. BY	INST. BY	BULB
ADDITIONAL LIGHTING EQUIP.					
T/C	1	TIME CLOCK	SB	GC	
EXIT					
11190	5	EXIT - EMERGENCY LIGHT - WHITE			LITHONIA #AFN
11517	5	EMERGENCY EXIT LIGHT - BLACK WITH 2 EMERGENCY HEADS			JUNO #NXP-3-G-BL
RECESSED CAN					
X0005	16	CAN - RECESSED HOUSING FOR LED ROUND TRIM - 2IN - NEW EXTERIOR CEILING ROUND	SB	GC	LED
SCONCE					
11483	3	EXIT - SECURITY LIGHT WALL MOUNTED			LED
20837	18	SCONCE - TECH LIGHTING WINDFALL - BLACK			(1) LED 5W 2700K (INCLUDED) OR EQUAL
SITE					
54321	8	2-10 Light Squares - LED			Pole Mount Area and Roadway Luminaire





- E5001**



D

C

B

A

Branch Panel: A

Location: STARBUCKS  
Supply From: CT CABINET/METER  
Mounting: Recessed  
Enclosure: NEMA 1

Volts: 120/208 Wye  
Phases: 3  
Wires: 4

A.L.C. Rating: 22K  
Mains Type: MLO  
Mains Rating: 400 A  
MCB Rating:

Notes:  
PROVIDE FEE-THRU LUGS TO FEED PANEL B

NOTES	CKT	Load Name	Trip	Poles	A	B	C	Poles	Trip	Load Name	CKT	NOTES	
	1	RTU-1	60 A	3	5764...	5764...		3	60 A	RTU-2	2		
	3	--	--	--		5764...	5764...	--	--	--	4		
	5	--	--	--			5764...	--	--	--	6		
	7	ROOFTOP RECEPTACLES	20 A	1	360 VA	300 VA		1	20 A	EXHAUST FAN	8		
	9	DT WINDOW/CURTAIN	20 A	1		300 VA	180 VA		1	20 A	EXTERIOR RECEPTACLE	10	
	11	INTERIOR RECEPTACLE	20 A	1			180 VA				12		
	13										14		
	15										16		
	17										18		
	19										20		
	21										22		
	23										24		
	25										26		
	27										28		
	29										30		
	31										32		
	33										34		
	35										36		
	37										38		
	39										40		
	41										42		
	43										44		
	45										46		
	47										48		
	49										50		
	51										52		
	53										54		
	55										56		
	57										58		
	59										60		
	61										62		
	63										64		
	65										66		
					Total Load:	12189 VA	12009 VA	11709 VA					
					Total Amps:	102 A	100 A	98 A					
Legend:													
Load Classification	Connected Load	Demand Factor	Estimated Demand	Panel Totals									
Power	35186 VA	100.00%	35186 VA										
Receptacle	720 VA	100.00%	720 VA										
				Total Conn. Load: 35906 VA									
				Total Est. Demand: 35906 VA									
				Total Conn. Current: 100 A									
				Total Est. Demand Current: 100 A									

Branch Panel: B

Location: STARBUCKS  
Supply From: PANEL "A"  
Mounting: Recessed  
Enclosure: NEMA 1

Volts: 120/208 Wye  
Phases: 3  
Wires: 4

A.L.C. Rating: 22K  
Mains Type: MLO  
Mains Rating: 400 A  
MCB Rating: N/A

Notes:

NOTES	CKT	Load Name	Trip	Poles	A	B	C	Poles	Trip	Load Name	CKT	NOTES
	1										2	
	3										4	
	5										6	
	7										8	
	9										10	
	11										12	
	13										14	
	15										16	
	17										18	
	19										20	
	21										22	
	23										24	
	25										26	
	27										28	
	29										30	
	31										32	
	33										34	
	35										36	
	37										38	
	39										40	
	41										42	
	43										44	
	45										46	
	47										48	
	49										50	
	51										52	
	53										54	
	55										56	
	57										58	
	59										60	
	61										62	
	63										64	
	65										66	
					Total Load:	0 VA	0 VA	0 VA				
					Total Amps:	0 A	0 A	0 A				
Legend:												
Load Classification	Connected Load	Demand Factor	Estimated Demand	Panel Totals								
				Total Conn. Load: 0 VA								
				Total Est. Demand: 0 VA								
				Total Conn. Current: 0 A								
				Total Est. Demand Current: 0 A								

REV.	DATE	DESCRIPTION
1	08/27/2021	BUILDING DEPARTMENT REVISIONS



08/27/2021

MARIETTA HWY & I-575  
5068 MARIETTA HIGHWAY  
CANTON, GA 30114

ELECTRICAL SCHEDULES

ISSUED FOR CONSTRUCTION	DATE
BID	
PROJECT MANAGER	DESIGNER
AK	AS

JOB NO.  
2020379.07

E6001

D

C

B

A

Branch Panel: C

Location: TENANT B 91

Supply From:

Mounting: Recessed

Enclosure: NEMA 1

Volts: 120/208 Wye

Phases: 3

Wires: 4

A.I.C. Rating: 22K

Mains Type: MLC

Mains Rating: 400 A

MCB Rating:

Notes:

NOTES	CKT	Circuit Description	Trip	Poles	A	B	C	Poles	Trip	Circuit Description	CKT	NOTES
	1	RTU-3	60 A	3	5764...	180 VA		1	20 A	RTU-3 RECEPTACLE	2	
	3	--	--	--		5764...	0 VA	3	200 A	PANEL "D"	4	
	5	--	--	--			5764...	0 VA	--	--	--	6
	7					0 VA		--	--	--	8	
	9										10	
	11										12	
	13										14	
	15										16	
	17										18	
	19										20	
	21										22	
	23										24	
	25										26	
	27										28	
	29										30	
	31										32	
	33										34	
	35										36	
	37										38	
	39										40	
	41										42	
			Total Load:		5944 VA	5764 VA	5764 VA					
			Total Amps:		50 A	48 A	48 A					

Legend:

Load Classification	Connected Load	Demand Factor	Estimated Demand	Panel Totals
Power	17293 VA	100.00%	17293 VA	
Receptacle	180 VA	100.00%	180 VA	
				Total Conn. Load: 17473 VA
				Total Est. Demand: 17473 VA
				Total Conn. Current: 49 A
				Total Est. Demand Current: 49 A

Notes:

Branch Panel: H

Location: TENANT B 91

Supply From:

Mounting: SURFACE

Enclosure: NEMA 3R

Volts: 120/208 Wye

Phases: 3

Wires: 4

A.I.C. Rating: 22K

Mains Type: MCB

Mains Rating: 100 A

MCB Rating: 100 A

Notes:

NOTES	CKT	Circuit Description	Trip	Poles	A	B	C	Poles	Trip	Circuit Description	CKT	NOTES
	1	EXTERIOR LIGHTS	20 A	1	500 VA	500 VA		1	20 A	EXTERIOR LIGHTS	2	
	3	TIME CLOCK	20 A	1		200 VA	180 VA	1	20 A	EXTERIOR RECEPTS	4	
	5	SPRINKLER	30 A	1			200 VA	180 VA	1	20 A	EXTERIOR LIGHTS	6
A	7	FIRE ALARM CONTROL PANEL	20 A	1	180 VA	180 VA		1	20 A	RECEPTS (SPRINKLER ROOM)	8	
	9	UNIT HEATER (SPRINKLER ROOM)	30 A	2		1850...					10	
	11	--	--	--			1850...				12	
	13										14	
	15										16	
	17										18	
	19										20	
	21										22	
	23										24	
	25										26	
	27										28	
	29										30	
	31										32	
	33										34	
	35										36	
	37										38	
	39										40	
	41										42	
			Total Load:		1360 VA	2230 VA	3450 VA					
			Total Amps:		11 A	20 A	30 A					

Legend:

Load Classification	Connected Load	Demand Factor	Estimated Demand	Panel Totals
Power	180 VA	100.00%	180 VA	
HVAC	3700 VA	100.00%	3700 VA	
Receptacle	360 VA	100.00%	360 VA	
				Total Conn. Load: 7040 VA
				Total Est. Demand: 7040 VA
				Total Conn. Current: 20 A
				Total Est. Demand Current: 20 A

Notes:  
A. PROVIDE BREAKER LOCK-ON DEVICE.

Branch Panel: D

Location:

Supply From: PANEL "C"

Mounting: Recessed

Enclosure: NEMA 1

Volts: 120/208 Wye

Phases: 3

Wires: 4

A.I.C. Rating: 22K

Mains Type: MLC

Mains Rating: 200 A

MCB Rating: N / A

Notes:

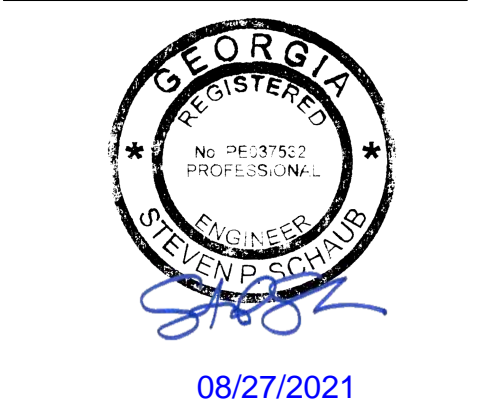
NOTES	CKT	Circuit Description	Trip	Poles	A	B	C	Poles	Trip	Circuit Description	CKT	NOTES
	1										2	
	3										4	
	5										6	
	7										8	
	9										10	
	11										12	
	13										14	
	15										16	
	17										18	
	19										20	
	21										22	
	23										24	
	25										26	
	27										28	
	29										30	
	31										32	
	33										34	
	35										36	
	37										38	
	39										40	
	41										42	
			Total Load:		0 VA	0 VA	0 VA					
			Total Amps:		0 A	0 A	0 A					

Legend:

Load Classification	Connected Load	Demand Factor	Estimated Demand	Panel Totals
				Total Conn. Load: 0 VA
				Total Est. Demand: 0 VA
				Total Conn. Current: 0 A
				Total Est. Demand Current: 0 A

Notes:

REV.	DATE	DESCRIPTION
1	08/27/2021	BUILDING DEPARTMENT REVISIONS



MARIETTA HWY & I-575  
5068 MARIETTA HIGHWAY  
CANTON, GA 30114

ELECTRICAL SCHEDULES  
BUILDING SHELL

	DATE
PERMIT	01/23/2020
BID	--/--/----
CONSTRUCTION	--/--/----
RECORD	--/--/----

PROJECT MANAGER	DESIGNER
AK	AS

JOB NO.  
2020379.07

E6002