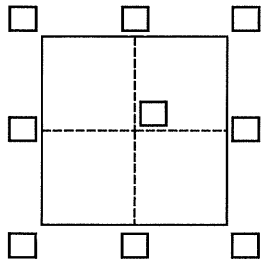


# CORNER RECORD

Agency Index BK 98 PG 93  
Document Number CR 10172

City of OAKLAND County of ALAMEDA, California  
Brief Legal Description \_\_\_\_\_



## CORNER TYPE

Government Corner ☐ Control ☐  
Meander ☐ Property ☐  
Rancho ☐ Other ☐

Date of Survey June 5, 2017

## COORDINATES (Optional)

N. \_\_\_\_\_ E. \_\_\_\_\_  
Elevation \_\_\_\_\_  
Units Metric ☐ U.S. Survey Foot ☐  
Horizontal Datum \_\_\_\_\_  
Zone \_\_\_\_\_ Epoch Date \_\_\_\_\_  
Vertical Datum \_\_\_\_\_

☐ Complies with Public Resources Code §§8801-8819  
☐ Complies with Public Resources Code §§8890-8902

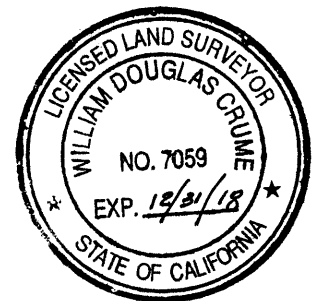
PLS Act Ref.: ☐ 8765(d) ☒ 8771 ☐ 8773 ☐ Other:  
Corner/Monument: ☐ Left as found ☐ Established ☐ Rebuilt ☒ Pre-Construction  
☐ Found and tagged ☐ Reestablished ☐ Referenced ☐ Post-Construction

Narrative of corner identified and monument as found, set, reset, replaced, or removed:  
☐ See sheet #2 for description(s):

## SURVEYOR'S STATEMENT

This Corner Record was prepared by me or under my direction in conformance with  
the Professional Land Surveyors' Act on 7/27/2017

Signed William Douglas Crume P.L.S. or R.C.E. No. 7059



## COUNTY SURVEYOR'S STATEMENT

This Corner Record was received 5 JUNE, 2017  
and examined and filed 17 AUGUST, 2017

Signed Michael Rubner P.L.S. or R.C.E. No. 6843

Title COUNTY SURVEYOR

County Surveyor's Comment \_\_\_\_\_



